

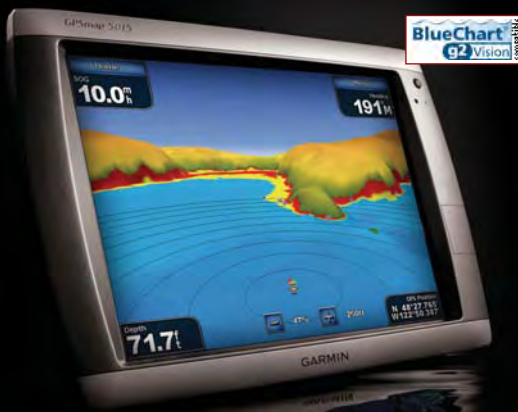
NAVIGATE!

Marine Distribution

MARINE ELECTRONICS BUYER'S GUIDE 2008

TOUCHSCREEN INNOVATION!

Find out more about the Garmin 5000 series range of touchscreen combi displays inside...



LOW COST AIS TRANSPONDER

Digitalyacht's new AIT250 is an affordable solution for safety at sea!



OVER 500 TOP PRODUCTS INSIDE!

GET THE LATEST PRICES & ORDER SECURELY ONLINE NOW AT WWW.NAVMARINE.NET

SETTING THE STANDARD!

See the full range of Standard Horizon's C-Map MAX compatible chartplotters, including the superb new 12.1in CP500!



• Competitive Trade Prices • Fast Delivery • Expert Advice • Friendly Knowledgeable Team

NAVIGATE MARINE DISTRIBUTION

Welcome to Navigate! Marine Distribution - Europe's leading specialist marine electronics wholesaler. In our latest Trade Buyer's Guide you'll find a selection of our 6000+ product range including radars, autopilots, communications equipment, PCs, software, instruments, electronic charting and GPS from all the world's leading manufacturers.



WHOLESALE ONLY!

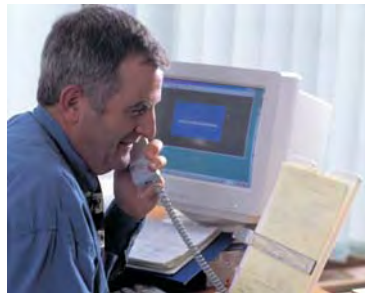
Navigate! only supplies the marine trade and offers a true one stop source for all your marine electronic needs. Competitive pricing is, of course, guaranteed but so is fast delivery from extensive stocks.

Whether it's a spare part or a sophisticated satellite communications system, one consolidated source for all your needs makes your buying more efficient and faster. You can also access daily updated trade pricing on the internet at www.navmarine.net



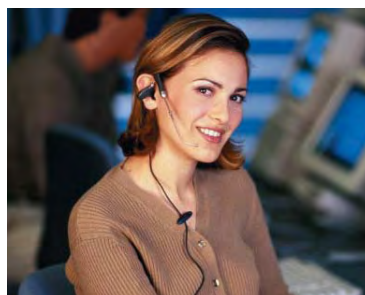
EXPERT, FRIENDLY ADVICE AND SERVICE

Specialist products need specialist advice and at Navigate!, our sales team don't just answer the telephone, they answer your questions. Expert technical advice, product selection and post sales support add up to an unbeatable package for you and your customers.



CALL US TODAY

We also offer invoicing in pounds, dollars or euros to suit your needs and a choice of flexible payment options including credit card & monthly accounts with settlement by direct debit. Navigate truly is your one stop, marine electronics shop. No more consolidating orders from a variety of suppliers – you'll find it all under one roof. Call us today on **0870 121 3085**



Product Colour Code Key

■	Navigation Equipment
■	Autopilots
■	Instruments
■	Communications
■	Echosounders/Fishfinders
■	Electronic Cartography



By Manufacturer

Bose	36
Jeppesen Marine (C-Map)	34-35
Digitalyacht	40-41
Eagle	27
EasyAIS	37
Echopilot	31
Furuno	23-25
Garmin	13-18
Geonav	29
Grundig	36
Icom	44-45
Iridium	46
KVH	39
Linn	36
Lowrance	27
Magellan	37
Mastervolt	37
McMurdo	30
Moerer	37
NASA	19
Navionics	32-33
Nobeltec	38
Northstar	21
Raymarine	3-12
Scanstrut	22
SeaMe	29
Simrad	26
Standard Horizon	42-43
Tacktick	28
Thrane & Thrane	46
Thuraya	46



By Product

Active Radar Reflector	29
AIS	4, 19, 23, 37, 40
Antenna Mounts	22
Autopilots - Cockpit	8, 27
Autopilots - Inboard	9, 10, 16, 21, 25, 26
Cameras	5
Cartography	18, 32-35
Chartplotters	3-6, 13-14, 20-21, 23-27, 29, 37, 40-41, 43
Combi Units	3-6, 14, 15, 20, 21, 23-27, 29, 43
Entertainment	36
EPIRBs	30
Fishfinders	3-6, 14, 17, 20, 23-27, 29, 43
Forward Looking Sounders	31
GPS - Fixed	24
GPS - Handheld	13, 27, 29, 37
Inverters & Battery Chargers	37
Instruments	11, 16, 19, 23, 26, 28
Loudspeakers	36
Man Overboard Monitors	4
Marine Monitors	5, 41
Navtex	19, 24, 30, 37
PC Software	12, 24, 32, 34, 38
PC Systems & Peripherals	12, 19, 40, 44
PLBs & SARTS	30
PMR Radios	44
Radars	3-5, 14, 15, 21, 23-27, 38, 41
Satcoms/Satellite Internet	39, 46
Satellite Compass	25
Satellite TV	6, 39
SSB Radios	19, 45
VHF - Fixed	6, 7, 20, 25, 26, 42, 45
VHF - Handheld	6, 42, 44
VHF Antennas	44
Weather Receivers	19, 37

C Series Combi Displays

RAYMARINE C120

12.1in Colour Combi Display



Superb single station multifunction navigation display with a 12.1in high resolution 256 colour daylight viewable screen. The C-Series brings all aspects of navigation into one location, acting as a central hub and giving total navigation control from a single station - chart, instrument, autopilot, GPS, and fishfinder. Screen configuration is simple and the screen can be split to display multiple information sources simultaneously.

On its own, the C120 is a powerful chartplotter, using the latest Navionics XL3 Gold charts. The SeaTalk and NMEA ports enable it to be easily connected to autopilots, instruments, DSC VHF radios and more. To unlock the real power of the C120, simply add plug in a radar antenna and/or the DSM300 digital sounder module and the C120 becomes a multifunction combination display - chart, radar and echosounder.

KEY FEATURES

- Excellent contrast and wide viewing angle
- Compact flash memory gives unlimited storage
- Display Navtex info from external engine
- Radar chart overlay option
- AIS chart overlay from external AIS engine
- True and relative motion options
- User configurable custom windows option
- Auto Range changes chart scale to keep vessel and waypoint on the same screen while underway
- Radar, SeaTalk, SeaTalk2 and Digital Sounder module inputs
- NMEA input and output

SUPPLIED WITH

Power & interface lead, mounting bracket.

ORDER CODE - ZRAYE02022

RAYMARINE C80

8.4in Colour Combi Display



If you want to enjoy the benefits of having a C Series on board but your budget doesn't stretch to the C120, then consider the C80. This unit features a more compact 8.4in sunlight-view display but still offers all the power, features and split screen functionality of the larger unit.

ORDER CODE C80 - ZRAYE02020

RAYMARINE C70

6.5in Colour Combi Display



Small but powerful. This is the perfect solution for owners of smaller boats who don't want to settle for less when it comes to features - the C70 manages to pack in all the functions of its bigger brothers into a compact unit with a 6.5in sunlight-view 256 colour split screen display.

ORDER CODE C80 - ZRAYE02018

RAYMARINE C & E SERIES

Radar Scanners

When adding radar to your C or E series you have your choice of radome or open array scanners, all of which deliver unparalleled performance.

KEY FEATURES

- Compatible with any C or E Series display
- Lower receiver noise figure (less than 5 dB) for more efficient target echo reception
- Auto GST Fully automatic Gain, Sea Clutter and Tune Control for hands off operation and optimum performance
- Advanced microprocessor controlled transmitter receiver features 8 Pulse width/PRF settings, providing enhanced targets returns though every range scale



RADOME KEY FEATURES

- Choice of 2Kw (18in) or 4Kw (24in) models
- Lightweight and compact
- Ideal for smaller sail and power boats
- Minimal power consumption



OPEN ARRAY KEY FEATURES

- Choice of 4Kw and 10Kw, 4ft or 6ft models
- Ideal for larger power boats and superyachts
- Narrow horizontal beam widths for enhanced target separation
- Longer range scales
- Increased power output for improved long range performance
- Quiet operation

i Tech info

Raymarine Radar Scanners

When ordering your Pathfinder radar you will need to specify which antenna you require -

Power (kW)	2kW	4kW	4kW	4kW	10kW	10kW
Type	RD	RD	OA	OA	OA	OA
Size (in)	18	24	48	72	48	72
Weight (kg)	6.5	7.5	30	33.4	30	33.4
Range (nm)	24	48	72	72	72	72
Part No.	ZRAYE 52065	ZRAYE 52067	ZRAYT 52001-S	ZRAYT 52013-S	ZRAYT 52012-S	ZRAYT 52014-S

RD - Radome Antenna (enclosed)

OA - Open Array

Power consumption is typical, and may increase for Open Array antennas in high winds.

Call us to discuss your requirements if you are in any doubt.

RAYMARINE E SERIES

12.1in Colour Multi-Station Combi Display



**HOT
PRODUCT!!**

Raymarine's E80 and E120 Series multifunction, multi station navigation displays combine chartplotter, fishfinder, radar, instrument data and on-board video displays into a single, rugged, easy to use unit that is compatible with the very latest Navionics Platinum cartography. The amazing 8.4in (E80) and 12.1in (E120), 256 colour ultrabright displays are sunlight viewable and waterproof, so are equally at home mounted above or below decks. The multi station facility means you can fit one at the chart table and another at the flybridge, in the cockpit or wherever you need to keep in touch with what's going on - and the superfast 100 megabit SeaTalk_{hs} networking means data and images are transmitted virtually instantaneously.

KEY FEATURES

- Single, dual or multi-station configurations
- **NEW!** Display Navtex info from external engine
- Radar chart overlay option
- **NEW!** AIS chart overlay from external AIS engine
- Plug & play - connect up to 8 SeaTalk_{hs} devices
- Display remote video sources from CCTV cameras, entertainment systems and more
- Export navigation video to remote monitors or displays
- Display NMEA2000 compatible engine system data

- Network with SeaTalk, SeaTalk2, SeaTalk_{hs}, NMEA0183 or NMEA2000 instruments
- Patented digital sonar technology for precise targeting of fish and bottom structure
- Optional Raymarine Keyboard - see and control your E Series anywhere on board!
- Bracket or flush mount

SUPPLIED WITH

Power & interface lead, mounting bracket.

ORDER CODE E80 - ZRAYE02011
ORDER CODE E120 - ZRAYE02013

RAYMARINE AIS250

Black Box AIS Receiver

The Raymarine AIS250 easily integrates with existing VHF antennas using an inbuilt VHF splitter. The AIS250 then interfaces to Raymarine Combi displays, allowing AIS targets to be graphically overlaid in both chartplotter and radar modes.



KEY FEATURES

- Receives Class A and B AIS broadcasts
- Displays target name, course, speed and status
- Reconcile AIS and radar targets for added safety
- Inbuilt antenna splitter
- Two NMEA 0183 inputs, two NMEA 0183 outputs
- Inbuilt NMEA multiplexer

ORDER CODE - ZRAYE03015

RAYMARINE LIFETAG

Wireless Personal Safety System

Personal safety revolution! The Raymarine LifeTag is a wireless crew monitoring and man overboard alert system. The base station monitors up to 16 different LifeTags simultaneously. If a person falls overboard or a tag moves out of range of the base station, an onboard alarm is sounded.



KEY FEATURES

- Automatic or manual activation
- LifeTag data displayed on C/E Series & Instruments
- MOB position automatically plotted as waypoint

SUPPLIED WITH

2 LifeTag Wireless Pendants, LifeTag base station, batteries, straps, alarm module

ORDER CODE - ZRAYE12185

RAYMARINE DSM30 & DSM300

HD Digital Sounder Module

Add HD Digital sounder technology to the C and E Series combi displays with the DSM30 (600W) and DSM300 (1000W) digital sounder modules. Choose from a wide range of transducers (see below).



KEY FEATURES

- DSM30 - 600 Watt, 12v
- DSM300 - 1000 Watt, 12 or 24v
- 50/200kHz dual frequency
- Submersible to IPX7 standard
- hsb2 networking compatible with "Plus" series radars, chartplotters and fishfinders
- HD Digital technology virtually eliminates clutter
- Auto Adaptive Gain control - no adjustment required
- Digitally Adaptive Transmitter Receiver with infinite receiver bandwidth settings and digital filter
- A-Scope (Real-Time Display): Split second real time representation of fish and bottom features
- Auto or manual zoom (x2, x4 or x6)
- Bottom lock and white line

SUPPLIED WITH

Transducers must be specified. If fitting to an E Series a SeaTalk_{hs} crossover coupler or SeaTalk_{hs} Network Switch is required

ORDER CODE DSM30 - ZRAYE63074
ORDER CODE DSM300 - ZRAYE63069

i Tech info

Raymarine Echosounder Transducers

Suitable for the Digital Sounder Modules and most Raymarine stand-alone fishfinders (except A Series).

P319 Plastic thru hull
600W, 50/200kHz
Depth only

B744V Bronze thru hull
600W, 50/200kHz
Depth, speed, temp
Also available with long stem B744VL (shown)

P66 High speed transom mount
600W, 50/200kHz
Depth, speed, temp

P79 Adjustable in-hull
600W, 50/200kHz
Depth only

SS555 Stainless steel thru hull
600W, 50/200kHz
Depth only

B256 Bronze thru hull high perf'
1000W, 50/200kHz
Depth, temp

B260 Bronze thru hull v high perf'
1000W, 50/200kHz
Depth, temp

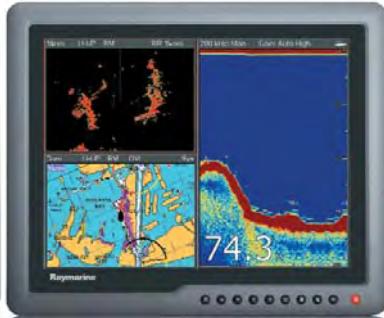


G Series Navigation System

RAYMARINE G120/G150/G170/G190

Marine Monitors

These superb marine monitors not only integrate perfectly with the rest of the G Series Navigation System, but can also be used with a wide range of other devices - onboard PCs, CCTV cameras, satellite TV, DVD, game consoles - in fact anything with a VGA or DVI output. With 9 video inputs, all onboard navigation, security and entertainment systems can be centralised via one set of displays.



KEY FEATURES

- 12, 15, 17 and 19 inch displays
- High resolution: 1024 x 768 pixels (XGA)
- Ultra bright sunlight viewable display technology with anti-reflective filter
- 9 video inputs (3 Analogue VGA, 2 DVI, 3 Composite Video, 1 S-Video)
- Wide viewing angle and sharp contrast, adjustable backlighting with night mode
- On Screen Display (OSD) menu for more advanced management
- Direct access keys provide quick access to each video input source as well as PIP (Picture in Picture), brightness and night mode controls

NEW FOR 2008

- Picture In Picture - resize/reposition second window anywhere on the display
- Impact resistant glass fascia bonded to LCD prevents condensation
- Low profile, thin bezel for unobtrusive, professional looking installation

SUPPLIED WITH

Sun cover, VGA cable, power cable, mounting hardware

ORDER CODE G120 - ZRAYE02034

ORDER CODE G150 - ZRAYE02035

ORDER CODE G170 - ZRAYE02036

ORDER CODE G190 - ZRAYE02037

RAYMARINE GPM400 (Europe) G Series Processor Module

The core of the G Series system, with a super fast processor, high performance graphics hardware and an inbuilt shock resistant, high capacity hard drive. The rugged aluminum housing is designed for cool, quiet, trouble-free operation under any conditions.

KEY FEATURES

- Pre-loaded with Navionics Platinum charts for the whole of Europe (no unlock codes required)
- Up to 10 times faster than other embedded marine navigation systems
- Compact Flash card reader for card-based charts
- Two high performance DVI/VGA video output ports
- 3000 waypoints/45,000 trackpoints
- Can be used with DSM300/400 sounder module
- Connections for SeaTalkNG, SeaTalkhs, SeaTalk, NMEA2000, NMEA 0183
- Multiple GPM400 module support via SeaTalkhs

ORDER CODE - ZRAYE02047

RAYMARINE GVM400 G Series Audio-Video Module

Video server for interfacing up to 4 external video devices to the G Series System. SeaTalkhs networking eliminates the need to route multiple video signal cables throughout the system.

KEY FEATURES

- Integrated video observation system
- 4 composite inputs or 3 composite + 1 S-Video with stereo audio
- View up four video streams simultaneously
- Two GVM400 video modules can be added for up to eight video streams on the network
- Compatible with Raymarine CAM50 and CAM100 marine cameras

ORDER CODE - ZRAYE02043

RAYMARINE COMMAND CTR G Series Command Centre Keyboard



The control point for the G-Series Navigation System, the Command Centre Keyboard offers simple, intuitive control of all system features and functions. Can be dash installed or wireless mounted.

A single keyboard can be used to control anything from a single GPM400/G-Series Monitor combination on a smaller vessel right up to multiple monitors and processors on a superyacht.

KEY FEATURES

- Control multiple GPM400 processor modules and display combinations
- LCD identifies each nav station and display in use
- Full remote control of each G-Series display
- Optional wireless kit
- Intuitive softkey interface and alphanumeric keypad
- Inbuilt autopilot control
- Optional wireless upgrade kit and base station

ORDER CODE - ZRAYE02044

RAYMARINE CAM100 (PAL)

Day and Night Vision Video Camera

Transforms the G & E Series into a powerful onboard video observation systems. Improve docking safety by monitoring blind spots or keep track of the engine room and crew. Use multiple cameras for a total view of your vessel's surroundings. Reverse image version also available.

KEY FEATURES

- Plug & Play with G and E Series
- Automatic switching between true colour (day) and black & white (night) use
- Up to 15m total darkness visibility in night mode.

ORDER CODE - ZRAYE03006



RAYMARINE HD DIGITAL RADAR

Open Array Radar Antennas



NEW FOR 2008

HD Digital technology brings the power of digital signal processing with a truly adaptive transmitter and receiver that automatically adjusts to changing environmental and sea conditions. HD Digital radar gives a dramatically clearer radar picture with crisp, well-defined echoes and life-like target presentation. Super HD Digital processing delivers a radar image unmatched by similar analogue or digital systems, giving a level of performance that rivals systems of more than twice the physical size and power output.

MODELS AVAILABLE (OPEN ARRAY)

- RA1048D - 4kW 48in HD Digital, 72nm
ORDER CODE - ZRAYT52071
- RA1072D - 4kW 72in HD Digital, 72nm
ORDER CODE - ZRAYT52074
- RA1048SHD - 4kW 48in Super HD Digital, 72nm
ORDER CODE - ZRAYT52085
- RA1072SHD - 4kW 72in Super HD Digital, 72nm
ORDER CODE - ZRAYT52087
- RA3048SHD - 12kW 48in Super HD Digital, 72nm
ORDER CODE - ZRAYT52086
- RA3072SHD - 12kW 72in Super HD Digital, 72nm
ORDER CODE - ZRAYT52088

RAYMARINE CAM50 (PAL)

Dome Camera

Ideal for interior installations, the unobtrusive dome design is ideal for mounting in the saloon, wheel house or engine room. Can be ceiling or wall mounted.

KEY FEATURES

- Plug and play with Raymarine G & E Series
- Manually adjustable pan and tilt
- High quality imager, excellent colour reproduction
- Reverse image version also available

ORDER CODE - ZRAYE03017



Turn to the back page for pricing and ordering info NOW!

RAYMARINE A60 5.7in Colour Chartplotter-Fishfinder



The A60 is a compact yet powerful 5.7in chartplotter supplied with a Raystar 12 GPS - simply add the DSM25 Digital Sounder module and an appropriate transducer to add fishfinder functionality, or select the chartplotter/fishfinder system pack and get everything you need to get started.

KEY FEATURES

- 5.7in sunlight viewable wide angle colour display
- Rugged submersible construction (IPX7 standard)
- Console mount option
- NMEA input/output
- Head up, chart up, north up display options
- Fast chart screen redraw
- 1000 waypoints, 50 routes
- Optional Compact Flash memory expansion

SUPPLIED WITH

A60 Chartplotter - Raystar 12 WAAS differential GPS, power & interface cable, mounting bracket
A60 Chartplotter/Fishfinder - Raystar 12 GPS, DSM25 sounder module, P58 transom mount triducer, power & interface cable, mounting bracket

ORDER CODE A60 - ZRAYE33026

ORDER CODE FISHFINDER PACK - ZRAYE33028

RAYMARINE A65 6.5in Colour Chartplotter-Fishfinder



Offers all the features of the A60 but with a larger 6.5in display. The chartplotter/fishfinder system pack includes the DSM25 and transom mount transducer.

ORDER CODE A65 - ZRAYE33022

ORDER CODE FISHFINDER PACK - ZRAYE33024

RAYMARINE DSM25 HD Digital Sounder Module

Designed exclusively for the A60 & A65, this 50/200kHz, 500W digital sounder module features the same digital technology used on the top of the range DSM300.

KEY FEATURES

- Plug & Play
- Submersible to IPX7
- HD Digital technology
- Adaptive receiver technology precisely targets fish and bottom structure with amazing clarity

SUPPLIED WITH

Transducers must be specified

ORDER CODE - ZRAYE63070

RAYMARINE RAY54E DSC VHF Radio



One of our best sellers, this rugged submersible DSC VHF radio is great value for money, with a large LCD screen that features a 4 line GPS display. Simple control layout, 1 or 25 watt output and external speaker socket. Also available in white.

KEY FEATURES

- All channel scan, tri-watch
- DSC number directory
- Large screen with GPS display
- Flush mountable



ORDER CODE - ZRAYE43025

RAYMARINE RAY101E Handheld VHF Radio



Supplied with NiMH batteries, but takes standard alkaline batteries as well in the same waterproof battery tray. All standard VHF functions including scan and dual watch.

KEY FEATURES

- High clarity backlit display
- Large easy to use backlit keypad
- Key lock function

SUPPLIED WITH

Charger, 6 x NiMH cells, mains adaptor, cigarette lighter adaptor, wrist strap and belt clip

ORDER CODE - ZRAYT43029

RAYMARINE 37STV Satellite TV Antenna System (Europe)



If you want the benefits of satellite TV onboard, but you've always thought your boat was too small, then the 37STV system is the solution, which will fit on most boats 25-40ft in length.

KEY FEATURES

- Offers all the key features of the larger systems, but in a package suitable for smaller boats
- Footprint of only 14.5in, weighs only 8.6kg
- Watch satellite TV on a television, monitor, G170 or G190 marine monitor or E Series display
- Engineered for the harshest marine environments
- Quickly acquires signals from all DVB compatible service providers

SUPPLIED WITH

Antenna, Antenna Control Unit. You will need to purchase and activate a DVB compatible satellite TV receiver with the provider of your choice and provide a television monitor or other suitable video display

ORDER CODE 37STV - ZRAYE93018

RAYMARINE 45STV & 60STV Satellite TV Antenna System (Europe)

Satellite antenna systems for DVB compatible digital satellite television receivers, featuring a stylish and compact dome with a fully automatic, marine stabilised antenna providing uninterrupted satellite television reception in almost any condition. It quickly identifies compatible DVB (Digital Video Broadcast) satellites, using a unique Wide Range Search (WRS) algorithm. Highly accurate satellite tracking at sea is achieved using Dynamic Beam Tilting technology, ensuring a clear picture in the most challenging conditions.

KEY FEATURES

- 45STV suitable for vessels of all sizes, footprint of only 19.2in, weight is only 14kg
- 60cm 60STV for vessels of 50ft and above offers greater signal range and improved reception
- Watch satellite TV on a television, monitor, G Series marine monitor or E Series display
- Engineered for the harshest marine environments
- Simplified cabling for easy installation
- Display E-Series feature video input for interfacing with satellite television receivers
- Dual LNB Design - watch the weather at the helm while others watch TV down below
- Supports multiple receivers
- Wide Range Search algorithm allows for fast identification and acquisition of satellites

SUPPLIED WITH

Antenna, Antenna Control Unit. You will need to purchase and activate a DVB compatible satellite TV receiver with the provider of your choice and provide a television monitor or other suitable video display

ORDER CODE 45STV - ZRAYE93003

ORDER CODE 60STV - ZRAYE93007

VHF Radios

Find out more...

DVB Satellite TV Coverage

The Raymarine 37, 45 and 60 STV Satellite Television Antenna Systems can track a variety of DVB compatible and DSS (DirecTV) satellites. The system contains a pre-programmed library of European satellites. There are also two open slots which can be programmed with user defined satellites.

To receive a satellite television service you will need to subscribe to the service from the relevant service provider. Please see each provider's web site for detailed information on coverage, satellite footprints, and subscription pricing.



Hotbird
www.eutelsat.com



Hotbird
www.eutelsat.com



Astra
www.ses-astra.com



Astra
www.ses-astra.com



Hispasat
www.hispasat.com



Sirius
www.nsab.se



Thor
www.telenor.com



DirecTV
www.directv.com



EchoStar
www.dishnetwork.com



Bell Express Vu
www.expressvu.com

Note - Reception in the US and Canada will require the North American STV versions.

RAYMARINE RAY55E

DSC VHF Radio

NEW FOR
2008



The Ray55E features rotary controls for volume, squelch and menu operation and an extra large LCD display with dual channel mode that displays both the active and standby channel simultaneously. The fistmike includes integrated channel controls and an inbuilt speaker. The Ray55E is also expandable to 2 stations with full duplex intercom capability using the optional Raymic Full Function Handset.

KEY FEATURES

- Class D DSC transceiver
- DSC Distress key transmits GPS position and a digital mayday
- NMEA0183 input with Position, COG & SOG display
- Chartplotter position polling via NMEA output
- Extra large dot matrix LCD
- Dual Channel Display (2UP Mode) displays active channel and stand by channel simultaneously
- Programmable favourite channel soft keys
- 4 Scan Modes: All Scan, Saved (Memory) Scan, Priority All Scan and Priority Saved Scan
- Submersible (IPX7) rugged housing
- Low profile bezel with optional flush mount kit

SUPPLIED WITH

Radio, microphone, sun cover, mounting bracket, power/speaker/data cable

ORDER CODE - ZRAYE43037

RAYMARINE RAYMIC

Remote Station Handset

Need a second VHF station? Add full function remote control of the Raymarine Ray55 and Ray218 VHF radios with the Raymic remote station handset. The Raymic features a large backlit LCD status display and controls including a quick access 16 key, volume, squelch and favorite channel soft keys.

NEW FOR
2008

KEY FEATURES

- Full access to all the features and functions of the Ray55 and Ray218 VHF radios
- DSC Distress key transmits GPS position and a digital mayday
- Extra large dot matrix LCD
- Speaker microphone
- Dual Channel Display (2UP Mode) displays active channel and standby channel simultaneously
- Programmable favourite channel soft keys
- Quick Access 16/9 Key
- Submersible (IPX7 Standard)
- Full duplex intercom between stations

SUPPLIED WITH

Handset, cradle

ORDER CODE - ZRAYA46051

RAYMARINE RAY218E

DSC VHF Radio/Loudhailer

NEW FOR
2008



The Ray218E is a submersible (IPX7) rugged and reliable VHF radio with an inbuilt 30 Watt Hailer with "Listen Back" capability and automatic fog horn. It also features rotary controls for volume, squelch and menu operation plus an extra large LCD display with 2UP dual channel mode that displays both the active and standby channels simultaneously. The soft keys make accessing frequently used channels and menu functions simple. The fistmike includes integrated channel controls and an inbuilt speaker. The Ray218E is also expandable to 2 stations with full duplex intercom capability using the optional Raymic Full Function Handset.

KEY FEATURES

- Class D DSC transceiver
- Dual and Tri Watch
- NMEA0183 input with Position, COG & SOG display
- Chartplotter position polling via NMEA output
- Programmable Scanning
- Superior receiver with excellent intermodulation rejection
- Low profile bezel with optional flush mount kit

SUPPLIED WITH

Radio, microphone, sun cover, mounting bracket, power/speaker/data cable

ORDER CODE - ZRAYE43033

RAYMARINE RAY240E

Modular DSC VHF Radio

VHF radio system which allows the transceiver unit to be mounted in an out of the way location, leaving just the waterproof handset and remote loudspeaker on show. Dual station and remote speaker support is also featured. Each handset provides full VHF and DSC functionality plus intercom facility between stations.

KEY FEATURES

- Easy-to-read backlit display
- Full function alphanumeric keypad
- Submersible IPX-7 handset
- Programmable scan and tri-watch
- Optional second station control with intercom capability
- Loudspeaker with on/off switch and volume control
- Optional fog horn/loudhailer



SUPPLIED WITH

One handset, loudspeaker, transceiver unit, interconnecting cables, power cable.

ALSO CONSIDER

- Simrad RS87

ORDER CODE - ZRAYE42002

Turn to the back page for pricing and ordering info NOW!



Raymarine

Cockpit Autopilots

RAYMARINE S1 WHEEL PILOT

Cockpit Wheel Autopilot

Fully enclosed wheel mounted autopilot - no belts or untidy trailing wires. Features wheel mounted drive and a fixed control unit with large backlit display. The convenience of an inboard pilot at the cost of a cockpit pilot.

KEY FEATURES

- Low power consumption
- Innovative enclosed design
- SeaTalk and NMEA interface
- Backlit display and keypad
- Navigational information repeater
- Intelligent course holding software
- Suitable for sailboats up to 7,500kg
- Can be used on hydraulically steered boats (with optional rudder feedback)

SUPPLIED WITH

Control unit, drive/gearbox unit, rudder reference, fluxgate compass and cabling

ORDER CODE - ZRAYE12180

CUSTOMER COMMENTS

"Since I retired we've sailed around the world, most of the time with our Raymarine Wheepilot in control and it's never let us down, even in the worst conditions."

- Mr J Plaitt, Devon



Optional Extras

Add second station control to your ST1000, ST2000 and S1 Cockpit Pilots by adding the wireless SmartController.

**AVAILABLE FOR
OVERNIGHT
DESPATCH**

RAYMARINE S1/S1GP TILLER PILOT

High Performance Cockpit Tiller Autopilot

The ultimate tiller autopilots, with a fixed control head and compass unit and two very powerful drive unit options.



KEY FEATURES

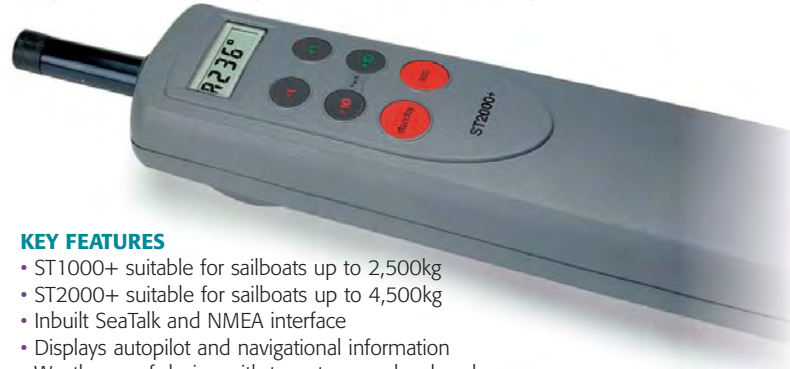
- S1 for sailboats up to 6,000kg
- S1 GP for sailboats up to 7,500kg
- Inbuilt SeaTalk and NMEA interface
- Displays autopilot and navigational information
- Weatherproof design with two stage pushrod seal
- Low power consumption
- Intelligent course holding software

ORDER CODE S1 - ZRAYE12190
ORDER CODE S1 GP - ZRAYE12192

RAYMARINE ST1000+/ST2000+

Cockpit Tiller Autopilot

Raymarine's range of tiller autopilots are suitable for most tiller-steered sailboats. Easy to use and install they feature a useful backlit display.



KEY FEATURES

- ST1000+ suitable for sailboats up to 2,500kg
- ST2000+ suitable for sailboats up to 4,500kg
- Inbuilt SeaTalk and NMEA interface
- Displays autopilot and navigational information
- Weatherproof design with two stage pushrod seal
- Low power consumption
- Intelligent course holding software

ALSO CONSIDER

- Simrad TP10, TP22, TP33

ORDER CODE ST1000+ - ZRAYA12004
ORDER CODE ST2000+ - ZRAYA12005

Optional Extras

Add second station control to your ST1000, ST2000 and S1 Cockpit Pilots by adding the wireless S100 controller.



**SEEN IT
FOR LESS?
WE WILL NOT BE
BEATEN ON PRICE!**

We accept most major credit and debit cards



Wireless Autopilots

RAYMARINE S1000

Autopilot with Wireless Remote

The S1000 is an all-in-one-box autopilot system for powerboats with a SeaStar balanced hydraulic system. Complete with everything needed for easy installation, the S1000 is quick to fit and simple to use. No added complications from electronic compasses or rudder reference transducers - the S1000 doesn't need them. Control the S1000 with the S100 wireless remote - simply steer on to your desired heading, press AUTO to engage the pilot and off you go!



KEY FEATURES

- A simple "point and shoot" autopilot
- Designed for SeaStar hydraulic systems
- No electronic compass or rudder feedback unit needed
- GPS input required via NMEA
- Built-in fishing patterns including cloverleaf and zig-zag
- Steer straight at speeds up to 65mph
- Troll speeds as low as 1.3mph
- Can be linked to kicker motor

SUPPLIED WITH

Installation video, S100 wireless control unit, lanyard, belt clip, 2 x cradles, S1000 course computer, hydraulic pump, bleed kit

ORDER CODE - ZRAYE12169



RAYMARINE SMARTCONTROLLER

Wireless Remote Control

Take full on-board control of your Raymarine SeaTalk autopilot with the wireless SmartController. Wireless operation means freedom to monitor vital information when you're on deck or out of sight of your instruments.

Lightweight and compact for easy handling, the SmartController is easy to use thanks to its intuitive interface. Uses two rechargeable NiMH batteries - average 2 weeks use from a single charge.

KEY FEATURES

- Full function autopilot controller
- SeaTalk instrument repeater
- Plug and play - easy installation
- Uses latest and most reliable IEEE 802.15.4 wireless technology
- Range up to 10m from base station
- 8 user-defined pages
- Backlit display and buttons
- Keylock security
- Warning signal when remote is out of range of base station, automatically drops autopilot to standby
- Add additional base stations for extended range
- Add handsets for additional users

SUPPLIED WITH

Base station, SeaTalk lead, 2 x mounting cradles, lanyard, belt clip and NiMH rechargeable batteries

ORDER CODE - ZRAYE15023



Raymarine Inboard Autopilots

RAYMARINE ST6002 SMARTPILOT

Inboard Autopilot System

Raymarine's Smartpilot range of autopilots offer more power and greater steering accuracy with their advanced AST and Autolearn software features. The ST6002 is an ideal choice when console space is limited, with its compact control head that can show up to 7 SeaTalk data pages.

SMARTPILOT KEY FEATURES

- Complete all in one autopilot options
- Linear, hydraulic and sterndrive options
- Suitable for sail and power applications
- SeaTalk & NMEA networking
- Choice of ST6002, ST7002 and ST8002 controls
- Redesigned heads to compliment C Series, E Series and ST60+
- SeaTalk & NMEA interface
- Multi station control options
- Display acts as SeaTalk instrument repeater
- Easy access to connections
- Gyro compass option
- Current limiting protection

SUPPLIED WITH

Display, course computer, fluxgate or gyro compass, feedback unit, drive. See the box on this page for package information and call us for more details

ALSO CONSIDER

- Furuno NavPilot
- Navman G-Pilot
- Simrad AP25 and AP26

**ASK US ABOUT
INSTALLATION**



RAYMARINE ST7002 SMARTPILOT

Inboard Autopilot System

The S7002 Smartpilot takes all the features and performance of the ST6002 and adds a fully featured multi-function control unit with large, clear LCD display.

KEY FEATURES

- All the features of the ST6002
- Large display with analogue rudder angle indicator
- Inbuilt SeaTalk & NMEA interface
- Autopilot, navigation and instrument displays
- Multi station control options
- Remote control ST60/ST60+ instruments

SUPPLIED WITH

Display, course computer, fluxgate or gyro compass, feedback unit, drive. See the box on this page for package information and call us for more details



RAYMARINE ST8002 SMARTPILOT

Inboard Autopilot System

All the features of the ST7002, but with a large, easy to use rotary control knob and power steer option.

KEY FEATURES

- Large display with analogue rudder angle indicator
- Inbuilt SeaTalk & NMEA interface
- Autopilot, navigation and instrument displays
- Multi station control options
- Remote control ST60/ST60+ instruments

SUPPLIED WITH

Display, course computer, fluxgate or gyro compass, feedback unit, drive. See the box on this page for package information and call us for more details



Also consider...

Inboard Pilots by -

- Furuno page 25
- Garmin page 16
- Northstar page 20
- Simrad page 26

CUSTOMER COMMENTS

"I've sailed in some pretty horrible conditions, and my Raymarine inboard pilot has never let me down."
- D. Pitt, Hants



i Tech info

Selecting your Smartpilot

The Raymarine Smartpilots are designed to suit virtually any kind of boat that is afloat up to 35,000kg displacement. The flexible modular system allows you to build up an autopilot package of drive, electronics core pack and control unit to suit your unique requirements -

1. Drive Selection

Raymarine offer a selection of drives to suit the size and steering type of your boat -

Linear Drives 12 & 24v (specify)

Type	Drive	Stroke	Displacement
1	Mechanical	12in	10,000kg
2S	Mechanical	12in	15,000kg
2L	Mechanical	16in	20,000kg
2	Hydraulic	10in	22,000kg
3	Hydraulic	12in	35,000kg

Reversing Pumps 12 & 24v (specify)

Type	Ram Capacity (Min-Max)
1	80-230cc
2	230-350cc
3	350-500cc

Rotary Drive 12 & 24v (specify)

Type	Displacement
1*	10,000kg
2	20,000kg

* 12v only

2. Core Pack Selection

The core pack is the electronics package for the autopilot. It includes the course computer, rudder feedback unit and fluxgate compass.

There are two core packs available, and these are specified depending on the drive unit type selected in stage 1 -

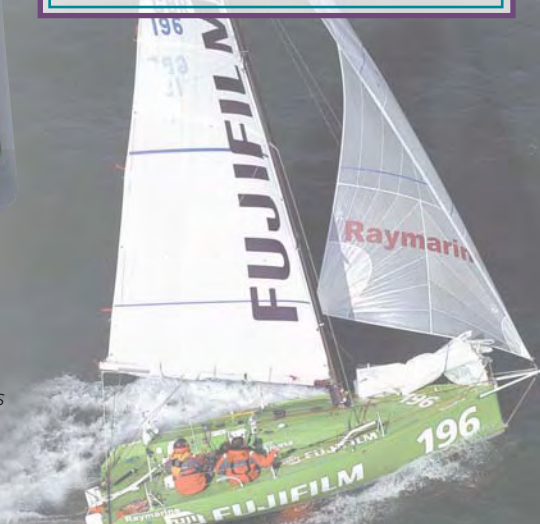
Core Packs

Type	Voltage	Drives	Gyro	SeaTalk Ports
S1	12v	Type1	No	1
S1G	12v	Type1	Yes	1
S2	12v	Type1	No	2
S2G	12v	Type1	Yes	2
S3	12/24v	Type1/2/3	No	2
S3G	12/24v	Type1/2/3	Yes	2

3. Control Unit Selection

Choose the control unit for the autopilot system -

ST6002	Compact control unit
ST7002	Full function control unit
ST8002	Full function unit with Power Steer



We accept most major credit and debit cards



RAYMARINE ST70

Instrument System

The ST70 Multifunction Colour display offers a brand new way of visualising instrumentation and navigation data. Designed for simple setup and extensive user customisation, ST70's capabilities include depth, speed, wind, navigation data, autopilot status, engine monitoring and more.

ST70 systems use Raymarine's new SeaTalkng Next Generation data bus which enables simple interconnection of multiple ST70 instruments, transducers and NMEA2000 compatible devices as well as existing Raymarine SeaTalk and SeaTalk2 systems.

To build a complete ST70 instrument system choose from the complete line of ST70 transducer pods and SeaTalkng networking components (sold separately.)

KEY FEATURES

- Fully customisable displays for depth, speed, wind, navigation data, engine data and more
- Full colour graphical displays, virtual analogue displays and histograms
- 8 user defined instrument data pages
- 16 screen layout options for each data page
- Eleven languages available
- High contrast sunlight viewable TFT colour display with wide viewing angles.
- Day and Night mode colour palettes.
- Fully waterproof to CFR-46 standard
- Easily retrofitted to ST60 surface mount installations
- Compatible with SeaTalk, SeaTalk2, SeaTalkng and NMEA 2000 devices.
- Intelligently converts first-generation SeaTalk data to SeaTalkng



HOT PRODUCT!!

SUPPLIED WITH

- Snap-on sun cover, surface and flush mounting kits, SeaTalkng backbone cable, SeaTalk adapter cable

ORDER CODE - ZRAYE22105

RAYMARINE ST60+ GRAPHIC

Multifunction Dot-Matrix Display

Versatile multifunction dot matrix display that can show any data on the SeaTalk network bus.



KEY FEATURES

- Intuitive Chapter and Page control keys
- Up to seven user configurable favourites pages
- View and control multiple data sources
- Large digit, graphical or multi-line format displays
- Single, split or quad screen displays

ORDER CODE - ZRAYE22075-P

RAYMARINE ST60+ COMPASS

Compass System

KEY FEATURES

- Heading
- Average course
- Course Over Ground*
- Man overboard display
- Keypad heading alignment



ORDER CODE - ZRAYE22014-P

RAYMARINE ST60+ SPEED

Speed/Log System

KEY FEATURES

- Boat speed 0-60kts
- Log & Resettable Trip
- Sea temperature
- Pilot Status display*
- Max & avg speed, VMG*
- Speed over ground*
- Stopwatch/lap timer
- Race start timer



ORDER CODE - ZRAYE22009-P

RAYMARINE ST60+ DEPTH

Depth System

KEY FEATURES

- Water depth 0.8-180m
- Depth trend indicator
- Transducer, waterline or keel offset
- Pilot status display*
- Shallow, deep & anchor alarms



ORDER CODE - ZRAYE22010-P

RAYMARINE ST60+ WIND

Wind System

KEY FEATURES

- Apparent wind speed
- True wind speed*
- True wind direction*
- Max wind speed alarm
- Beaufort, knots, m/sec
- Master or repeater operation



ORDER CODE - ZRAYE22012-P

RAYMARINE ST60+ TRIDATA

Combi System

KEY FEATURES

- Combined Speed and Depth multi-line display
- Boat speed 0-60kts
- Water depth 0.8-180m
- Speed over ground
- Automatic switching of depth sensors when depth sounder module is detected, to avoid interference



ORDER CODE - ZRAYE22013-P

**Requires relevant data to be present on SeaTalk*

RAYMARINE ST40

Entry Level Instrument System

Elegant and simple to operate, with large digits and razor sharp LCD displays. Optional snap-on bezels, three levels of back lighting including buttons and waterproof to USCG-CFR 46. SeaTalk compatible, all necessary transducers are supplied with the units.



SPEED ORDER CODE - ZRAYE22043

DEPTH ORDER CODE - ZRAYE22044

WIND ORDER CODE - ZRAYE22047

COMPASS ORDER CODE - ZRAYE22048

BIDATA ORDER CODE - ZRAYE22045

RAYMARINE RAYTECH RNS 6.0

PC Navigation Software Suite

Raytech RNS V6 is a powerful PC based electronic charting system supporting raster, vector and aerial photo cartography. Plan waypoints and routes, transferring them between your PC and Raymarine chartplotters and combi displays. With a customisable user interface, SeaTalkhs network support, an inbuilt worldwide tides and currents database and the option to download weather forecasts from raymarine.com just some of the features of this system you can unlock the real potential of your onboard PC.

NEW IN V6 FEATURES

- Integration with E Series displays using SeaTalkhs
- Simple single Ethernet connection between the PC and the SeaTalkhs network switch
- Now supports Navionics Gold and new Navionics Platinum charts on Compact Flash cards
- Improved waypoint and route sharing tools
- New HD Digital fishfinder playback feature allows you to record and play back the fishfinder display

KEY FEATURES

- Customisable user interface - organise navigation data into easy to use pages
- Download and animate weather forecasts from the Raymarine website
- Navigation and tactical tools - monitor wind, lay lines, other vessels and weather to enable you to make better decisions on the race course
- DataTrak time-based graphs - monitor wind trends and compare instrument data and the boat's performance
- Polar data collection and analysis - calculate your optimum speed and heading under varying conditions
- Route optimisation - identify the ideal route based on ocean current, wind speed and direction and your boat's polar characteristics

RECOMMENDED OPTIONS

- USB Navigation Keyboard
- G170 or G190 Marine Monitor
- USB Compact Flash card reader for Navionics Gold and Platinum charts. This also enables you to transfer routes and waypoints between Raytech and your Raymarine chartplotter/combi display using blank Compact Flash cards

MINIMUM SYSTEM REQUIREMENTS

- Pentium III 1.0GHz processor
- 128Mb RAM
- Windows 2000/XP
- CD-ROM drive
- Serial port
- Ethernet Port (for SeaTalkhs networking) or PCMCIA or USB2 port (for hsb2 integration)
- Monitor capable of displaying 1024x768 resolution, 16 bit colour
- Compatible USB Compact Flash card reader (for Navionics Gold and Platinum charts)

RECOMMENDED SYSTEM REQUIREMENTS

- Pentium IV processor or faster
- 512Mb RAM or higher
- NVIDIA GeForce 4 graphics processor
- Windows XP

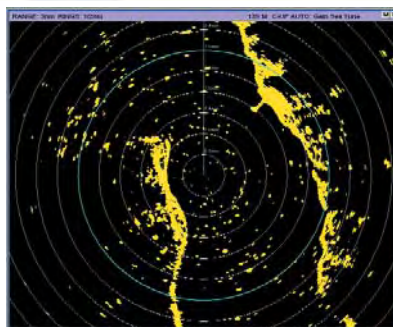
COMPATIBLE CHARTS

- Navionics Gold, Platinum and Hot Maps
- C-Map NT+ C-Cards (requires USB C-Card reader)
- C-Map NT+ PC charts
- MapTech raster charts
- Softchart raster charts
- NDI Canadian charts

SUPPLIED WITH

Raytech RNS V6 CD-ROM, 2m serial data cable, MapTech planning charts, SoftChart planning charts, C-MAP NT+ planning charts

ORDER CODE - ZRAYE83040



Radar Display



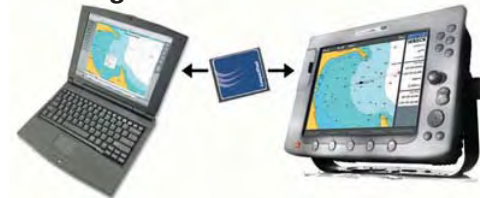
Radar/Chart Overlay



Raster Chart Display/3D Chart Display

RAYMARINE RAYTECH PLANNER

PC Navigation Planner Software



Limited version of RayTechRNS 6.0 software designed for planning and transferring waypoints and routes, between your PC and Raymarine chartplotters and multifunction displays

KEY FEATURES

- PC navigation software for the "at home" navigator
- Create and plan routes with a simple point and click interface
- Features built in planning charts for the entire world
- Compatible with a wide range of chart formats including, Navionics Gold, Platinum, C-MAP NT+, and raster charts
- Based on the powerful RayTechRNS 6.0 software

ORDER CODE - CALL FOR DETAILS

NAVIONICS CARD READER

Multichart Card Reader

Use in conjunction with your RayTech RNS 6.0 or RayTech Planner Software to read your Gold, Gold+, Platinum or Hot Maps Premium charts on your PC. Transfer waypoint and route data between your PC and compatible navigation systems like the A65, C Series, E Series and G Series.



ORDER CODE - ZRAYE86026

RAYMARINE KEYBOARD

USB Navigation Keyboard



The USB Navigation Keyboard takes advantage of the powerful RayTech RNS interface through dedicated navigation buttons and intuitive softkeys. A built in cursor and rotary knob are standard, along with a convenient alphanumeric keypad. Designed to be both "built-in" and handheld, the USB Navigation Keyboard's mounting cradle mounts flush in the dash and allows the keyboard to be removed for convenient hand held operation.

KEY FEATURES

- Full control of Raytech software
- Dedicated control keys, alphanumeric keypad, rotary control, cursor pad and softkeys
- Can be used as a fixed or handheld unit

ORDER CODE - ZRAYE05001

We accept most major credit and debit cards



GARMIN FORETREX 101/201

Wearable GPS

Hands-free GPS navigation for outdoor and marine users - at just 77 grams, they're lighter than most watches. The Foretrex 101 uses two AAA batteries and the Foretrex 201 features a rechargeable internal Lithium Ion battery, both offering 15hrs typical use.



KEY FEATURES

- Trip computer
- Accuracy <15m normal GPS mode, <3m WAAS
- Racing timers - configurable start sequence, alert tones and large-number digital readout
- 500 waypoints with graphic marks, 20 routes

SUPPLIED WITH

Wrist strap, Expandable strap, A/C desktop charger with pc interface cable (Foretrex 201 only)

ORDER CODE 101 - ZGAR010-00364-00

ORDER CODE 201 - ZGAR010-00361-00

GARMIN eTREX H

Handheld GPS

The eTrex H includes a high sensitivity receiver for ultra-accurate positioning, with all the features of the standard eTrex handheld in a 100x50mm package that weighs only 170g.



KEY FEATURES

- Waterproof
- 18 hrs battery use
- WAAS enabled
- Up to 500 waypoints with graphic icons
- TracBack™
- Animated graphics
- Wide range of models to suit all applications

ALSO AVAILABLE

- eTrex - basic model
- eTrex Summit - includes an altimeter and electronic compass
- eTrex Legend - World city database, 1Mb internal memory, MapSource compatible

ORDER CODE - ZGAR010-00631-00

GARMIN GPS72

Handheld GPS

One of the best entry-level handheld GPS on the market, this rugged waterproof unit is WAAS-enabled, has a large, 4-level grayscale screen and it floats!

KEY FEATURES

- 500 waypoints, 50 routes
- Large digit option
- Alarms for anchor drag, arrival, off-course, proximity waypoint and clock
- Trip computer with odometer, stopped time, moving average, overall average, total time, max speed and more
- Automatic track log - 10 saved tracks let you retrace your path in both directions
- Course and speed filtering
- Built-in celestial tables
- Available as marine bundle pack with marine mounting bracket, 12v cigarette lighter cable and carrying Case



ORDER CODE - ZGAR010-00309-00

GARMIN GPS76

Handheld GPS

With a higher resolution display than the GPS72, the GPS76 is supplied preloaded with worldwide city information and nautical navigation aids.

KEY FEATURES

- TracBack™
- Trip computer
- 16 hrs use on 2 x AA batteries
- Approach, arrival, off-course, waypoint proximity, anchor drag, shallow and deep water alarms



SUPPLIED WITH

PC Cable, Wrist strap

ORDER CODE - ZGAR010-00244-01

GARMIN GPSMap76

Handheld GPS

All the features of GPS76 with the addition of mapping functions - download charts from a Garmin MapSource CD-ROM.

KEY FEATURES

- 8Mb memory
- Includes detailed basemap
- Cities, major roads, rivers, lakes, plus worldwide city, navaid and European tide data



SUPPLIED WITH

PC Cable, Wrist strap

ORDER CODE - ZGAR010-00249-01

GARMIN GPSMap76S

Handheld GPS

All the features of the GPSMap76 plus a barometric altimeter and an electronic compass.

SUPPLIED WITH

PC Cable, Wrist strap



ORDER CODE - ZGAR010-00271-01

GARMIN GPSMap76Cx

Colour Handheld GPS

All the features of the 70 series with a 256 colour display, 115Mb of memory, an Atlantic Autoroute basemap and a Marine Point database. Fast USB connectivity makes loading charts and maps quick and easy.

KEY FEATURES

- Up to 30 hours battery life using 2 x AA batteries
- 1000 user waypoints, 50 routes
- 10,000 point automatic track log, 20 saved tracks
- Compatible with most MapSource products including BlueChart, City Select etc

SUPPLIED WITH

PC Cable, Wrist strap

ORDER CODE - ZGAR010-00468-01

ALSO AVAILABLE

- GPSMap76CSx - Adds a barometric altimeter and electronic compass.
- ZGAR010-00469-01**



GARMIN GPSMap60Cx

Handheld GPS Chartplotter

Rugged handheld WAAS GPS chartplotter with colour TFT sunlight-viewable display and inbuilt International basemap with auto-routing capabilities.

Compatible with BlueChart and City Select MapSource* products.

* Not recommended for use with Metroguide

KEY FEATURES

- 500 waypoints, 20 routes, 10,000 point tracklog, 20 saved tracks
- Large numbers option
- Serial and USB interfaces
- Multiple position formats
- Anchor, arrival, off-course, waypoint and clock alarms
- Dual position display mode
- 56Mb internal memory
- Battery life: 30 hrs (typical use)
- Trip computer and stop watch
- Built-in celestial tables

SUPPLIED WITH

PC/USB cable, Lanyard, belt clip

ALSO AVAILABLE

- GPSMap60CSx includes electronic compass and a barometric altitude sensor
- GPSMap60 with mono display

ORDER CODE GPSMAP60CX - ZGAR010-00421-01

ORDER CODE GPSMAP60CSX - ZGAR010-00422-01

ORDER CODE GPSMAP60 - ZGAR010-00322-11



Chartsounders & Combi Displays

Find out more...

What is GPS?

The Global Positioning System (GPS), is the only fully-functional satellite navigation system. More than two dozen GPS satellites orbit the Earth, transmitting radio signals which allow GPS receivers to determine their location, speed and direction. Since the first experimental satellite was launched in 1978, GPS has become indispensable for navigation around the world.



Developed by the United States Department of Defense, it is officially named NAVSTAR GPS (Navigation Signal Timing and Ranging Global Positioning System). Although the cost of maintaining the system is approximately US\$400M per year, including the replacement of aging satellites, GPS is free for civilian use.

In late 2005, the first in a series of next-generation GPS satellites was added to the constellation, offering several new capabilities, including a second civilian GPS signal called L2C for enhanced accuracy and reliability. In the coming years, additional next-generation satellites will increase coverage of L2C and add a third and fourth civilian signal to the system.

A GPS receiver calculates its position by measuring the distance between itself and three or more GPS satellites. Measuring the time delay between transmission and reception of the GPS radio signal gives the distance to each satellite, since the signal travels at a known speed. The radio signal also carries information about the satellite location so the receiver can compute the exact position of the satellite. After determining position and distance of at least three satellites, the receiver computes its location.

The GPS design calls for 24 satellites to be distributed equally among six circular orbital planes. Orbiting at an altitude of 10,988 nautical miles, each satellite passes over the same location on Earth twice a day. The orbits are arranged so that at least four satellites are always within line of sight from almost any place on Earth. As of August 2006 the GPS system has 29 active satellites. The extra satellites improve GPS accuracy by offering more points from which to measure. These extra satellites also provide redundancy should a satellite fail.

Also consider...

Chartplotters by -

- Lowrance page 27
- Northstar page 20
- Raymarine page 3-6
- Standard Horizon page 43

GARMIN GPSMap450/450S

4.5in Colour Chartplotter/Fishfinder

Available as a chartplotter (Map450) or a combination chartplotter/fishfinder (Map450S), this unit features an ultra-bright 4in colour QVGA display. The GPSMap450s comes with powerful dual frequency or dual beam sonar to clearly paint depth contours, fish targets, structure, etc. It's also CANet capable, allowing sounder data to be shared with other plotter displays on your boat. Supplied preloaded with UK/Eire Bluechart.



KEY FEATURES

- CANet compatible, satellite-enhanced 3D worldwide basemap
- Upgradeable to BlueChart g2 Vision cartography with optional plug in card
- Simple user interface for easy operation
- Simplify navigation with Auto Guidance

SUPPLIED WITH

GPS antenna, unit cover, tilt/swivel mount, cables, transducers sold separately

ORDER CODE MAP450 - ZGAR010-00515-52

ORDER CODE MAP450S - ZGAR010-00516-5A

GARMIN GPSMap3005C

5in Colour Combination Display

If you want to enjoy the benefits of the Garmin Marine Network but are limited on space or budget, the GPSMap3005C is the perfect solution, offering all the features of the larger 3006C and 3010C (without the VGA output and video input options), featuring a 5in sunlight viewable display.



KEY FEATURES

- Bluechart g2 compatible
- Garmin Marine Network compatible
- Inbuilt world basemap
- MARPA target tracking
- Add radar with optional GMR sensors
- Radar/chart overlay and split screen modes
- Add sonar with optional GSD21 analogue or GSD22 digital remote sounder

SUPPLIED WITH

GPS 17 WAAS-enabled sensor, A/V cable, power/data cable, mounting bracket, unit cover

ORDER CODE - ZGAR010-00402-00

GARMIN GPSMap550/550S

5in Colour Chartplotter/Fishfinder

Available as a chartplotter (Map550) or a combination chartplotter/fishfinder (Map550S), this unit features an ultra-bright 5in colour QVGA display and offers all the features of the GPSMap 450/450S. Supplied preloaded with UK/Eire Bluechart.



KEY FEATURES

- All the features of the GPSMap450 and GPSMap450S
- 240x320 pixel QVGA display

ALSO AVAILABLE

- GPSMap555/555S with a higher-resolution 480x640 pixel VGA display

SUPPLIED WITH

GPS antenna, unit cover, tilt/swivel mount, cables, transducers sold separately

ORDER CODE MAP550 - ZGAR010-00616-00

ORDER CODE MAP550S - ZGAR010-00617-00

ORDER CODE MAP555 - ZGAR010-00603-00

ORDER CODE MAP555S - ZGAR010-00604-00

GARMIN GPSMap3006C/3010C

6.4 & 10in Colour Combi Displays

Colour 6.4 and 10in combination displays offering GPS, weather, sonar, radar and other data.



KEY FEATURES

- Dual Bluechart g2 card slots
- 2 composite video inputs, 1 VGA video output, 3 NMEA0183 ports
- Anchor drag, arrival, off-course, shallow water, deep water, proximity waypoint, clock and battery alarms
- Inbuilt world basemap
- Add radar with optional GMR series digital antennas
- Add sonar with optional GSD21 analogue or GSD22 digital remote sounder
- Radar/chart overlay and split screen modes,
- MARPA target tracking

SUPPLIED WITH

External 12 channel GPS antenna, power/data cable, mounting bracket

ORDER CODE MAP3006C - ZGAR010-00348-00

ORDER CODE MAP3010C - ZGAR010-00350-00

GARMIN GPSMap4010 10in Colour Combination Display



NEW FOR 2008

Like the GPSMap4008 and 4012, the 4010 serves as an all-in-one "nerve centre" for the Garmin Marine Network. This chartplotter has crisp, video-quality resolution on a 10.4in diagonal SVGA display as well as a worldwide, satellite-enhanced basemap. Add sonar, radar and more by connecting to the Garmin Marine Network. For even more enhanced features, add the optional BlueChart® g2 Vision card.

KEY FEATURES

- 10in 800x600 pixel SVGA display
- Worldwide satellite basemap
- Dual Bluechart g2 card slots
- Add radar with optional GMR series digital radar antennas
- Radar/chart overlay and split screen modes
- MARPA target tracking
- Add sonar with optional GSD21 analogue or GSD22 digital remote sounder



SUPPLIED WITH

GPS 17 WAAS sensor, A/V cable, power/data cable, mounting bracket, unit cover, flush mount, bail mount

ORDER CODE - ZGAR010-00690-00

GARMIN GPSMap4008 & GPSMap4012 8.4 & 12.1in Colour Combination Displays

With a choice of an 8.4in 640x480 pixel VGA or a 12.1in 1024x768 pixel XGA display, these units combine video-quality resolution and luminous colour with the latest in sensor and data options. Worldwide satellite imagery enhances the standard vector basemap format, and add the optional BlueChart g2 Vision card, for high-resolution aerial reference photos which help in navigating tricky harbours and channels or locating places such as marinas, fuel barges or restaurants. The g2 Vision plugin data card also allows the units to graphically depict a true 3D "mariner's eye" topside view or "fish eye" underwater navigation perspective.



HOT PRODUCT!!



KEY FEATURES

- Worldwide satellite basemap
- Auto Guidance searches all the chart features to suggest the best known charted route for navigation
- Dual Bluechart g2 card slots
- 4000 waypoints, 50 routes, 300 waypoints/route
- 3 network, 2 composite video, 1 VGA video and 4 NMEA0183/NMEA2000 ports

- Anchor drag, arrival, off-course, shallow water, deep water, proximity waypoint, clock, and battery alarms
- Inbuilt celestial tables for sun and moon calculations
- Add radar with optional GMR series digital antennas
- Radar/chart overlay and split screen modes
- MARPA target tracking
- Add sonar with optional GSD21 analogue or GSD22 digital remote sounder

SUPPLIED WITH

GPS 17 WAAS sensor, A/V cable, power/data cable, mounting bracket, unit cover, flush mount, bail mount

ORDER CODE MAP4008 - ZGAR010-00592-00
ORDER CODE MAP4012 - ZGAR010-00591-00

GARMIN GPSMap5008, GPSMap5012 & GPSMap5015 8.4, 12.1 & 15in Touchscreen Colour Combination Displays

Garmin's revolutionary range of touch-screen combi displays offer all the features of the 4000 series with an intuitive touch-screen interface. Choose from an 8.4in 640x480 pixel VGA, a 12.1in 1024x768 pixel XGA display or a 15in 1024x768 pixel XGA display. The superb units are Bluechart g2 Vision compatible, and like the 4000 series they can be connected in a multi-station network with Garmin's digital radar, instruments, autopilots and more forming the ultimate navigation system.



EDITOR'S CHOICE



KEY FEATURES

- All the features of the 4000 series combi displays
- Innovative touch-screen design
- Dual Bluechart g2 card slots
- Add radar with optional GMR series digital antennas
- Add sonar with optional GSD21 analogue or GSD22 digital remote sounder

SUPPLIED WITH

GPS 17 WAAS sensor, A/V cable, power/data cable, mounting bracket, unit cover, flush mount, bail mount

ORDER CODE MAP4008 - ZGAR010-00592-00
ORDER CODE MAP4012 - ZGAR010-00591-00

Tech info

Garmin GMR Digital Radar Antennas



Garmin's digital radar antennas are suitable for all Garmin combi displays. Processing takes place in the antenna itself, allowing any combi display on the network to control the radar. Digital processing also allows for more precise recognition, enhancement and filtering of radar echoes making the image easier to read and interpret.

To aid in collision avoidance, the optional MARPA capability allows you to track the bearing, course, speed and predicted closest approach of up to 10 targets. (Requires heading sensor input).

Power (kW)	4kW	4kW	4kW	4kW
Type	Radome	Radome	Open	Open
Size (in)	18	24	48	72
Beam Width	5.2°	3.6°	1.8°	1.1°
Range (nm)	36	48	72	72
Part No.	GMR18	GMR24	GMR404	GMR406

GARMIN GMI 10

Digital Marine Instrument Display

Garmin enter the instrument market with a radical colour multifunction display that integrates with the Garmin Marine Network and other sensors via NMEA2000. The GMI 10 display adds a new dimension of flexibility for boaters who want a fully integrated marine instrument system, improving on the traditional method of marine instrumentation in which each instrument function has its own dedicated display. By showing data from multiple remote sensors on one display, the GMI 10 offers a streamlined approach to marine instrumentation.

The GMI 10 serves as the hub of a family of integrated Garmin marine sensors, all connected via NMEA2000 or NMEA0183 data ports. Use the GMI 10 to display instrument data such as depth, speed through the water, water temperature, fuel flow rate, engine data, fuel level, wind direction and more, depending upon what sensors are connected. The GMI 10 supports more than two dozen standard NMEA2000 and more than 20 NMEA0183 data sentences.

With integration via NMEA 2000 ports, any of these units can be added or removed from the NMEA 2000 bus without affecting other units on the bus. These units can also connect to any Garmin Marine Network chartplotters that have a NMEA 2000 port.

KEY FEATURES

- Clear, bright 320 x 240 pixel colour QVGA display
- Flexible, easily expandable system suits all boat sizes
- Waterproof
- GPS 17x 12-channel NMEA2000 WAAS GPS sensor
- Add fuel tracking capabilities with the GFS 10 fuel sensor
- Add depth sounder functionality with NMEA2000 and NMEA0183 Intelliducers
- Flush mountable



SUPPLIED WITH

Display, mounting hardware, sun cover, power/NMEA 0183 cable, NMEA 2000 power cable, NMEA 2000 drop cable, NMEA 2000 tee & terminator kit

ORDER CODE GMI 10 - ZGAR010-010-00687-00

ORDER CODE GPS 17x - ZGAR010-010-00694-10

ORDER CODE GFS 10 - ZGAR010-010-00671-00



GPS 17x GPS Sensor



GFS 10 Fuel Sensor

GARMIN GHP 10

Powerboat Autopilot System

The GHP 10 marine autopilot adds a whole new level of versatility to the Garmin marine line. This breakthrough unit gives power boat users an easy to use autopilot system to rely upon for auto-guided navigation.

The GHP 10 is controlled using the GHC 10. This control unit communicates with the autopilot system via a NMEA2000 bus, so autopilot heading data can easily be shared with other devices. Up to three GHC 10 controllers can be interfaced with a single GHP 10, ideal for boats with multiple helm stations.

The simple, intuitive interface of the GHC 10 gives boaters the confidence and security of controlling the heading of the boat at the press of a key. For example, each press of the steering soft key will change the commanded heading of the autopilot by 1°. And as a safeguard, a dedicated "Standby" key allows you to instantly place the autopilot in standby to keep it from re-engaging.

The GHC 10 communicates with the GHP 10 autopilot system via a NMEA2000 bus, so autopilot heading data can easily be shared with other devices. It can also communicate with a chartplotter for GPS-enabled route guidance over NMEA2000 or NMEA0183.

KEY FEATURES

- Suitable for all types of hydraulically steered powerboats - inboard, outboard, stern-drive, diesels
- No rudder feedback unit required
- Gyro-stabilised compass
- Patented Shadow Drive™ technology automatically disengages autopilot if the helm is turned and re-engages when a steady course is held
- Hold position against wind, waves or heavy current
- Can steer in reverse
- Clear, bright 320 x 240 pixel QVGA colour LCD display

SUPPLIED WITH

GHC 10, Course Computer, Gyro Compass, Shadow drive, CCU/ECU interconnect cable, buzzer, ECU power cable, NMEA2000 drop cable, NMEA2000 T-connector

ORDER CODE GHP 10 - ZGAR010-00705-00

ORDER CODE GHC 10 - ZGAR010-00688-00



**ASK US ABOUT
INSTALLATION**

Fishfinders & Sounders

GARMIN Fishfinder90

4in Mono Fishfinder

Compact dual beam fishfinder that combines ease of use with Garmin's exclusive fishfinder technology. The 45° beam angle gives a greater field of view.



KEY FEATURES

- 80/200kHz, max depth 200m (600ft)
- 100 watts RMS
- See-Thru function separates fish from thermoclines
- Alarms for fish size and shallow water
- Fish ID with optional fish depth numbers

SUPPLIED WITH

80/200kHz transom transducer, quick release mount

ORDER CODE - ZGAR010-00459-00

GARMIN Fishfinder140

4.75in Mono Fishfinder

If you like the features of the Fishfinder90 but want a larger, higher resolution screen then the Fishfinder140 is the answer. With all the features of the Fishfinder 90, the Fishfinder140 adds a 8.4 x 8.4cm (4.75in diagonal) 4-level greyscale display for greater detail. The keypad layout is simple and intuitive and the unit is easy to operate.



KEY FEATURES

- 80/200kHz, max depth 200m (600ft)
- 100 watts RMS
- See-Thru function separates fish from thermoclines
- Alarms for fish size and shallow water
- Fish ID with optional fish depth numbers

SUPPLIED WITH

80/200kHz transom transducer, quick release mount

ORDER CODE - ZGAR010-00460-00

GARMIN Fishfinder160C

4.75in Colour Fishfinder

The 160C is a dual beam fishfinder with a superb sunlight-viewable colour display. With all the features of the Fishfinder140, the 160C has a higher power output (150w RMS) giving a maximum depth of up to 300m (900ft).



KEY FEATURES

- 80/200kHz, max depth 300m (900ft)
- 150 watts RMS
- See-Thru function separates fish from thermoclines
- Alarms for fish size and shallow water
- Fish ID with optional fish depth numbers

SUPPLIED WITH

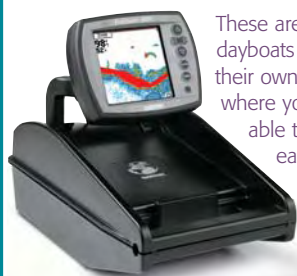
80/200kHz transom transducer, quick release mount

ORDER CODE - ZGAR010-00403-00

A closer look...

Portable Units

The Fishfinder90, 140 and 160C are also available as portable units with a battery pack and suction mount transducer.



These are ideal for small dayboats that don't have their own power supply, where you want to be able to move the it easily from boat to boat or if you want to be able to take it home with you at the end of the day.

GARMIN GSD21/GSD22

Remote Sounder Module



Turn your 400, 500, 3000 and 4000 series unit into a fully featured chartsounder with the GSD21 analogue and GSD22 digital black box modules. A range of transducers are available - call us for details.

KEY FEATURES

- 500W RMS (GSD21) max depth 450m
- 2kW RMS (GSD22) max depth 1500m
- Auto-ranging
- 2X and 4X auto and manual zoom
- Optional fish symbols
- See-Thru technology - separates fish from thermoclines and structure

SUPPLIED WITH

Transducers are not supplied

ORDER CODE GSD21 - ZGAR010-00502-00

ORDER CODE GSD22 - ZGAR010-00397-00

GARMIN Fishfinder300C

3.5in Colour Fishfinder

Ideal for recreational anglers who fish primarily in freshwater lakes, the 300C features an improved user interface, plus UltraScroll™ for fast screen updates. Supplied with a dual beam transducer, which provides excellent coverage in shallow waters.



KEY FEATURES

- Super bright, 240x320 pixel QVGA colour display
- 150 watts (RMS) 1200 watts (peak to peak)
- Auto Gain adjusts sonar sensitivity automatically
- See-Thru® technology shows weak and strong returns simultaneously
- Round flasher display mode
- White line
- 2X and 4X automatic and manual zoom
- Battery voltage indicator
- NMEA0183 output

SUPPLIED WITH

80/200kHz transom transducer, power/data cable, mounting bracket, flush mount hardware

ORDER CODE - ZGAR010-010-00682-01

GARMIN Fishfinder400C

4in Colour Fishfinder

The Fishfinder 400C combines high performance with a simple interface that makes it easy to locate fish in both freshwater and saltwater. Available with a choice of dual beam or dual frequency transducers.



KEY FEATURES

- 400 watt (RMS) dual beam, max depth 300m
- 500 watt (RMS) dual frequency, max depth 500m
- CANet compatible - sonar data to be shared with compatible Garmin combi displays
- Ultra-bright 4in QVGA colour display
- UltraScroll™ screen updates at live-action speeds

SUPPLIED WITH

Swivel mounting bracket, power/data cable, dual beam or dual frequency transducer, protective cover

ORDER CODE DISP ONLY - ZGAR010-00510-03

ORDER CODE DUAL BEAM - ZGAR010-00510-04

ORDER CODE DUAL FREQ - ZGAR010-00510-05

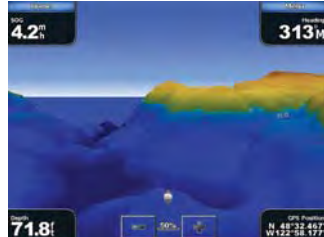
Electronic Cartography

GARMIN BLUECHARTS g2 VISION

Electronic Cartography



High resolution satellite images



Mariner's Eye View

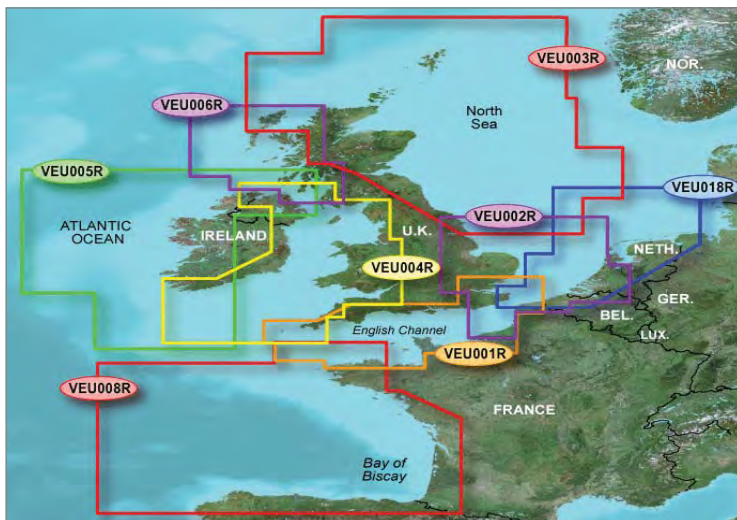
BlueChart g2 Vision offers the high detail charting of BlueChart g2 plus high-resolution satellite imagery, above and below water 3-D perspective, auto guidance technology, aerial photographs for real world reference, and coastal roads with points of interest. All the new Garmin plotters feature basic worldwide satellite imagery for a realistic "view from space" depiction. With optional g2 Vision cards, these images are upgraded to super high-detail aerial photomapping. It's the most realistic chart display you've ever seen on a graphical chartplotter. And you can "navigate on the picture" with a clear dynamic presentation of your boat's current position.

KEY FEATURES

- High-resolution satellite imagery overlaid on the chart
- Aerial reference photography
- Mariner's Eye view - a 3D perspective of chart information
- Fish Eye view - 3D perspective below the water line for displaying bottom contours based on bathymetric charting data
- Auto guidance technology will search the attributes of all relevant charts to suggest the best course for navigation
- Fishing charts, tides, currents, marine services, coastal roads and points of interest

GARMIN REGULAR CHARTS

UK & Ireland



Order Code Description

EU001R	BRITISH COAST: FELIXSTOWE TO ISLES OF SCILLY. RIVER THAMES FROM TWICKENHAM TO THE NORTH SEA. DUNKERQUE TO L'ABER WRAC'H, CHANNEL ISLANDS
EU002R	BRITISH COAST: FROM SCARBOROUGH HARBOUR TO NEWHAVEN, CONTINENTAL COAST: FROM AMSTERDAM TO FECAMP
EU003R	GREAT BRITAIN, NORTHEAST COAST: ISLE OF LEWIS, SCOTLAND TO BRIDLINGTON HBR, ENGLAND, ALSO THE CALEDONIAN CANAL, LOCH LINNHE AND LOCH NESS.
EU004R	IRISH SEA: PORT ELLEN ON THE ISLE OF ISLAY TO FALMOUTH. SHEEP HAVEN TO CAHERCIVEEN, REPUBLIC OF IRELAND.
EU005R	IRELAND, WEST COAST: DETAILED COVERAGE CORK HARBOUR TO BELFAST. GENERAL COVERAGE OF EAST COAST. SCOTTISH COAST FROM ISLE OF COLONSAY TO CAMPBELTOWN HBR.
EU006R	SCOTLAND, WEST COAST: ISLE OF LEWIS AND LOCH BERVIE TO CAMPBELTOWN HBR AND GIRVAN. IRISH COAST: GENERAL COVERAGE FROM SHEEP HAVEN TO CARNLOUGH HBR.
EU008R	BAY OF BISCAY: BINIC, FRANCE TO CABO FINISTERRE, SPAIN
EU018R	THE NETHERLANDS AND EUROPE: SPIEKEROOG, GERMANY TO CALAIS, FRANCE, INC THE NETHERLANDS AND BELGIUM COAST GT BRITAIN WHITSTABLE TO FOLKESTONE, INC GT YARMOUTH.

GARMIN BLUECHART g2

Electronic Cartography



Shaded map areas



3D chart representation



Port plan photograph

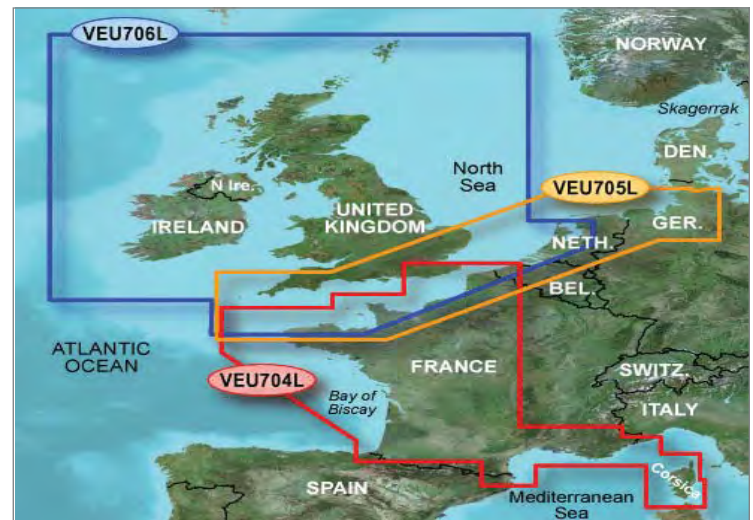


BlueChart g2 cartography features smoother layering and better integration of chart graphics for easy panning, scrolling and zooming. The richer colours and shading improves visibility and makes the information easier to interpret.

Detailed land features, coastal roadways, marine services and points of interest. Full-colour aerial photos of ports, marinas, bridges, and navigational landmarks are also included on many data cards. It offers a choice of normal 2D or 3D chart representation, making orientation easier.

GARMIN LARGE CHARTS

UK & Ireland



Order Code Description

EU704L	FRANCE: ENGLISH CHANNEL COAST FROM FRENCH-BELGIAN BORDER TO BREST, AND RAMSGATE TO LITTLEHAMPTON. FRENCH ATLANTIC COAST BAY OF BISCAY TO SAN SEBASTIAN, FRENCH MEDITERRANEAN COAST FROM ISLAS MEDAS, SPAIN TO THE ALASSIO, ITALY, CORSICA AND THE N. TIP OF SARDINIA.
EU705L	HAMBURG TO BREST: NORTH SEA COASTS OF GERMANY, BELGIUM, AND THE NETHERLANDS, FRENCH ATLANTIC COAST. ENGLISH CHANNEL BRITAIN FROM LOWESTOFT TO THE SCILLY ISLANDS, INCLUDING LONDON, DOVER, THE SOLENT AND THE ISLE OF WIGHT.
EU706L	UK & IRELAND: DETAILED COVERAGE OF THE BRITISH ISLES IN THEIR ENTIRETY, INCLUDING THE THAMES ESTUARY, CALEDONIAN CANAL, OUTER HEBRIDES, SHETLAND AND ORKNEY ISLANDS, ISLE OF WIGHT, ISLE OF MAN, AND THE IRISH SEA. COVERAGE ACROSS THE ENGLISH CHANNEL TO CHERBOURG, FR, INCLUDING THE CHANNEL ISLANDS.

Chart format suffixes -

2EU001R - Bluechart G2

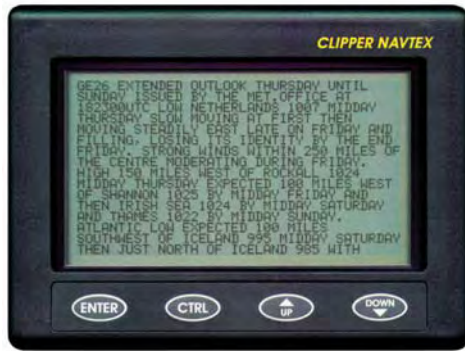
VEU001R - Bluechart G2 Vision

We accept most major credit and debit cards



Navigation Equipment

NASA CLIPPER NAVTEX Dual Frequency LCD Navtex Receiver



This dual frequency Navtex offers an ideal solution for those looking for an easy to fit, flush mount unit.

KEY FEATURES

- Ultra clear 16 line LCD with white backlighting
- Dual frequency (490 & 518kHz)
- Low power consumption (50mA)

SUPPLIED WITH

Compact stub antenna

CUSTOMER COMMENTS

"For the price, I can thoroughly recommend this Navtex as a great buy."

- N. West, Newton Ferrers

ORDER CODE - ZNAS010.011



NASA AIS RADAR AIS Receiver



Standalone AIS receiver/plotter designed for the leisure boat market. The display shows AIS carrying vessels in a format normally associated with conventional radar. A trail of previous positions clearly shows the relative track of all the targets on the screen.

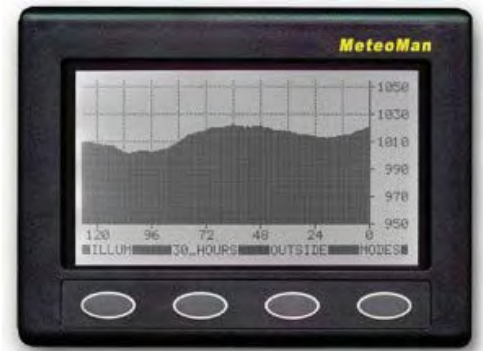
KEY FEATURES

- 1, 2, 4, 8, 16 and 32nm ranges
- Display shows SOG, target vessel's name, MMSI and current Lat/Long
- White backlit LCD display
- Low power consumption



ORDER CODE - ZNAS010.180

NASA METEOMAN Digital Barometer



Accurate, high resolution barograph recording over five days barometric pressure and wind speed data. Easy to use, reliable, rugged and draws very little power from the boat's battery. The Meteoman is also a marine chronometer, stop watch, race count-down timer, internal temperature display and battery voltage monitor

KEY FEATURES

- Wind speed and direction, ambient temperature and barometric pressure
- Precision barograph and anemograph
- Optional NMEA Wind sensor

ORDER CODE - ZNAS010.220

NASA PC NAVTEX PRO Black Box PC Navtex

View Navtex messages on your PC! Messages are stored in its own internal memory and transferred to the PC when you get on board - instantly get the latest weather forecast from your local station or any other message stored in the PC Navtex Pro's memory.



KEY FEATURES

- Receives messages even without PC connected
- 518 & 490kHz dual frequency
- Low current consumption - can be left on 24/7

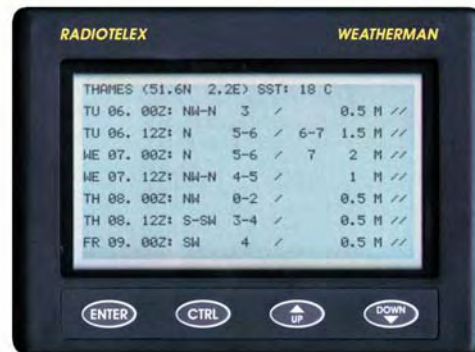
SUPPLIED WITH

Compact stub antenna, software, cable

ORDER CODE - ZNAS010.175



NASA WEATHERMAN RTTY Telex Receiver



Compact Radioteletype weather forecast receiver. Forecasts are transmitted continuously on several frequencies simultaneously, but it can be set to record data from areas of interest only. Memory can store several thousand lines of text.

KEY FEATURES

- High contrast 16 lines x 40 character display
- Power save auto timer on backlight
- Spectrum screen for simple signal analysis

SUPPLIED WITH

Active micro antenna

ORDER CODE - ZNAS010.060

NASA HF3M MF/HF Receiver



Covering 30kHz - 30MHz, the HF3M includes a weatherfax interface and software enabling you to download weather pictures onto your PC.

SUPPLIED WITH

Antenna, PC cable, weatherfax software, power supply

ORDER CODE - ZNAS010.028

NASA CLIPPER Instrument System

If you are on a budget these low cost but well constructed 110mm instruments with large, clear displays are well worth considering.



KEY FEATURES

- **Log** - log, trip log and trend indicator, kts/mph
- **Depth** - keel/waterline offset, deep/shallow alarms, trend indicator, feet or metres
- **Wind** - "digital analogue", selectable pointer style
- **Duet** - combines the Clipper Speed and Depth
- **Compass** - true or magnetic display, steering function, off-course alarm
- **GPS Repeater** - COG, SOG, Lat/Long, BTW, DTW, XTE, rolling road display

SUPPLIED WITH

Transducer and cabling

ORDER CODE LOG - ZNAS010.019

ORDER CODE DEPTH - ZNAS010.020

ORDER CODE WIND - ZNAS010.023

ORDER CODE DUET - ZNAS010.021

ORDER CODE COMPASS - ZNAS010.022

ORDER CODE GPS REPEATER - ZNAS010.024

NASA AIS ENGINE Black Box PC AIS

Just connect a standard marine antenna and turn your PC into an AIS display! The software runs in Windows 95, 98, ME, XP, 2000, NT and includes a world map on which vessels are plotted.

KEY FEATURES

- Display target vessel's name, MMSI number, position, call sign, destination etc
- Optional GPS input
- The black box can be used with plotters or other PC applications with an AIS input

SUPPLIED WITH

"SeaClear" and "Software on Board" software, 9-pin serials data, 12 volt power cable

ORDER CODE - ZNAS010.185



Turn to the back page for pricing and ordering info NOW!

VHF Radios, Chartplotters & Fishfinders

NORTHSTAR VHF 710

Fixed DSC VHF

The Northstar Explorer 710 is fully DSC capable and features call logs with instant call back capability. The large LCD presents 4 lines of text to display channel names, GPS position, GPS speed, GPS course or time, and DSC messages.



KEY FEATURES

- Large display (46 x 26 mm) with four lines of text (12 characters per line)
- Fisticmic with channel select, power and priority channel buttons
- Program three favourite channels for easy selection
- Call logs with instant Call Back capability
- Automatic GPS boat position and time when connected to a GPS receiver

SUPPLIED WITH

Fisticmic, , flush and bracket mounts, dust cover

ORDER CODE - ZNOR22050110

NORTHSTAR VHF 721

Fixed DSC VHF

The VHF 721 has been designed with ease-of-use in mind. The large display ensures a host of important information is clearly visible. Keep track of barometric pressure, fishing conditions, and with four lines of text you can easily view DSC messages, boat position, time and channel name. This model also features the option of a second station handset (the 701). Ideal for fly-bridge, sailboat cockpit or anywhere a second VHF station is useful. The second station mic for the VHF 721 features the same large LCD and gives complete control of all DSC and radio functions. The intercom function allows you to communicate between the base and the second-station handset. The handset is rated JIS7 water-resistant to withstand the tough marine environment.



KEY FEATURES

- Fisticmic with alphanumeric keypad plus channel, power and priority channel buttons
- Full function second station handset
- Super large, clear FSTN display with amber backlighting on both units
- Instant access to up to 3 of your favourite channels with easy user programming
- Select from several scanning modes such as All-Scan and Favourite Channel scan modes
- Automatic GPS boat position and time when connected to a GPS receiver
- Local/Distant feature eliminates unwanted interference in high traffic areas
- Call logs with instant call back capability

SUPPLIED WITH

Fisticmic, second station handset, flush and bracket mounts, dust cover

ORDER CODE - ZNOR22050130

ORDER CODE (WITH 2ND STATION) - ZNOR721DS

NORTHSTAR EXPLORER 650, 657 & 660

Colour Chartplotter/Fishfinders

Combines chartplotting and fishfinding in a single unit, offering simplicity of use, top performance, powerful output and high resolution displays. They also offer features such as petrol or fuel management as well as SmartCraft™ compatibility. The Explorer 657 features a higher resolution display and AIS navigation input.

KEY FEATURES

- Explorer 650 - 5in 320x234 pixel display
- Explorer 657 - 5in 640x480 pixel display, AIS input
- Explorer 660 - 7in 800x480 pixel display
- 3000 waypoints, 25 routes, 5 tracklogs
- Inbuilt fuel computer (requires fuel kit)
- Compatible with both C-Map NT+ and MAX charts with tide and port data
- When connected to a DSC VHF, can plot the real time position of up to 3 other boats directly on the chart
- 50/200kHz dual frequency fishfinder, 600W RMS output
- Max depth 600m



ORDER CODE EXPLORER 650 - WZNORNS00661 1

ORDER CODE EXPLORER 657 - ZNOR22060580

ORDER CODE EXPLORER 660 - ZNOR22060540

NORTHSTAR EXPLORER 550, 550i, 557 & 567

GPS Chartplotters

Northstar's popular range of daylight view chartplotters are all C-Map MAX compatible and have an inbuilt 16Mb regional background map. The 5in Explorer 550 is available with an internal or an external GPS antenna. The 5in Explorer 557 and 6.4in Explorer 567 feature higher resolution displays and AIS input.

KEY FEATURES

- Explorer 550i - 5in 320x234 pixel display, int GPS
- Explorer 550 - 5in 320x234 pixel display, ext GPS
- Explorer 557 - 5in 640x480 pixel display, AIS input
- Explorer 567 - 6.4in 640x480 pixel display, AIS input
- 3000 waypoints, 25 routes, 5 tracklogs
- WAAS / EGNOS enabled GPS
- Compatible with both C-Map NT+ and MAX charts with tide and port data
- Inbuilt fuel computer (requires optional fuel kit)
- SmartCraft compatible
- Dedicated waypoint key and Man Over Board key



ORDER CODE EXPLORER 550i - WZNORNS002965

ORDER CODE EXPLORER 550 - WZNORNS002961

ORDER CODE EXPLORER 557 - WZNORNS00291 1

ORDER CODE EXPLORER 567 - ZNOR22060360

NORTHSTAR EXPLORER 457 & 467

Fishfinders

Featuring sophisticated sounder technology and easy to use operation, the bright high resolution 640x480 displays make these dedicated fishfinders a stunning addition to a boat of any size. A dual frequency fishfinder allows you to select optimum performance for either deep or shallow water. Both units allow you to choose between dual and single frequency display, either narrow or wide angle.

KEY FEATURES

- Explorer 457 - 5in 640x480 pixel display,
- Explorer 467 - 6.4in 640x480 pixel display
- 600W output
- Dual frequency 50/200kHz, max depth 600m
- Sunlight viewable display
- Sonar, A-Scope and Zoom
- SmartCraft compatible, requires optional fuel kit
- Low battery, shallow, deep, water temperature and temperature rate of change alarms



ORDER CODE EXPLORER 457 - ZNOR22060460

ORDER CODE EXPLORER 467 - ZNOR22060480

We accept most major credit and debit cards



Combi Displays & Autopilots

NORTHSTAR M84 & M121

8.4in & 12.1in Colour Combi Displays

Superb 8.4 & 12.1in colour multifunction displays that integrate GPS, chartplotting, sonar, fuel management and video into one sleek, low profile unit. The daylight view 800x600 pixel SVGA colour screens can display data in full screen or up to four split screen panes, ensuring the information you need is at hand at all times.



KEY FEATURES

- Inbuilt 32Mb world map
- Dual C-Map MAX chart card slots
- High definition digital radar
- Dual frequency 50/200kHz echosounder
- Inbuilt 1kW echosounder transceiver automatically adjusts power output to match transducer fitted
- Max depth 1000m
- SmartCraft engine performance management



- Petrol and Diesel fuel management
- RCA video input - connect deck or engine room monitoring cameras, DVDs, camcorders etc (separate audio output required)
- VHF DSC interface - display call details on screen
- "Track-Your-Buddy" on-chart display integration with Northstar VHF radios
- Waterproof to IPX7

OPTIONAL ACCESSORIES

Transducers, fuel management kits, SmartCraft gateways and other peripherals must be ordered separately

ORDER CODE M84 - WZNORNS006634
ORDER CODE M121 - WZNORNS006624

NORTHSTAR 6100i SERIES

6.4 - 15in Colour Combi Displays

Networkable Combi display offering charting, radar, sounder, video and more in one powerful unit. Features networkable HD Digital radar, 600/1000W dual frequency (50/200kHz) sounder option and SmartCraft™ engine monitoring (diesel and petrol). Available in 6.4, 8.4, 10.4, 12 and 15in display sizes.

KEY FEATURES

- Compatible with all Navionics marine cartography
- High-resolution, direct sunlight viewable screen
- Optional 491 sounder module
- Networkable, multi station
- Fast network performance
- Video input and outputs
- Waterproof rugged casing



ORDER CODES - CALL FOR DETAILS

NORTHSTAR 8100i SERIES

12in & 15in Colour Combi Displays

Revolutionary combi display providing navigation, multimedia entertainment, instrumentation, cameras, fuel management, SmartCraft engine monitoring and more. High performance digital radar offers MARPA, radar chart overlay and networked radar means that any display can access the radar. Choose from the 12in touchscreen display with integral keypad, or the 15in touchscreen display with separate control pad.



KEY FEATURES

- Touch screen control for unparalleled ease of use
- C-Map MAX PRO cartography
- High performance networked digital radar with
- 1kW networked digital sounder
- Customisable displays
- DVD, video, CD and Digital Music player



ORDER CODES - CALL FOR DETAILS

NORTHSTAR DIGITAL RADAR

High Definition Radar Antennas

Northstar's High Definition Digital Radar systems allow you to add radar to your M84, M121, 6100i and 8100i combi displays. Combining high performance scanners and microwave technology with the very latest in digital radar processing. With scanner options ranging from a 2kW 18in radome up to a 25 kW/84in array there is a High Definition Digital Northstar Radar suitable for your boat.



KEY FEATURES

- High performance scanners
- Networkable radar system (6100i & 8100i only)
- Digital signal processing technology
- Radar/Chart overlay
- Automatic Tune, Gain and Sea Clutter adjustment
- Exceptional detection of small or distant targets, using advanced digital signal processing
- Presents targets better and rejects clutter using 10-bit digital Sensitivity Time Control (STC)
- Screen-clutter due to rough weather is cleared away using tailored sensitivity settings
- M84/M121 - 2, 4 & 6kW options
- 6100i/8100i - 2, 4, 6, 10 & 25kW options

SUPPLIED WITH

Scanner, processor box, cable

ORDER CODES - CALL FOR DETAILS

NORTHSTAR EXPLORER AP380

Colour Inboard Autopilot System

Northstar's powerful AP380 autopilot system offers superior course holding with a rate gyro supplied as standard. The innovative control unit features a high resolution colour daylight view TFT display and rotary control dial.



KEY FEATURES

- Control knob surround flashes to show course adjustments at a glance, even at night
- Unique on-screen animations of vessel's intended actions and progress
- One button dodge and jog keys
- Compass mode display with rudder angle indicator
- Pilot mode display with configurable data fields to display pilot information or nav data via NavBus
- Fuel management & SmartCraft display
- Multi station control option
- Compatible with Mercury Verado engines

CORE PACK SUPPLIED WITH

Course computer, fluxgate compass, rate gyro compass, rudder feedback unit. Drives must be specified separately - call for details

ORDER CODES - CALL FOR DETAILS

SCANSTRUT

Antenna Mounting Solutions

Scanstrut offers a comprehensive range of installation solutions to maximise the performance on your marine electronics. All major antenna brands and models are catered for, with options for mounting radar, satcom, GPS, VHF and TV aerials and nav lights. For further product information visit www.scanstrut.com.

SAILBOAT PRODUCTS

SCANSTRUT MAST PLATFORMS

Mast Mounts

For 2kW & 4kW radomes and small satcom/tv antenna.

KEY FEATURES

- New mounting foot design for 2008, makes for an easier installation
- Four swivel feet match profile of any mast
- 12 point fixing using high quality monel rivets

ACCESSORIES

Radar Guard, Cable Conduit and Mast Mount Adapter Kit (for masts with an integral track at the front)



SCANSTRUT SELF-LEVELLING RADAR MOUNT

Radar Mounts

For 2kW & 4kW radomes. Available as a backstay mount, mast mount or pole mounted versions.

KEY FEATURES

- Ensures radar is level with horizon at all times, preventing target loss for best possible radar picture
- Hydraulic damping eliminates minor oscillations
- Sealed system, entirely maintenance free
- Passive system, no power required
- Lightweight head unit, reduced weight aloft
- Radome cradle features fine tune adjustment for different angles
- Backstay Mount - options for mount fore or aft of backstay, suitable for both single and split backstays
- Mast Mount - weighs only 3.4kg, easy upgrade, same mounting footprint as M92722 and SC20
- Pole Mount - offers mounting option for additional small satcom antennas above radar

ACCESSORIES

GPS / VHF Antenna Mount

SCANSTRUT POLE SYSTEM

SC100 Pole System

For 2kW & 4kW radomes and small satcom/tv antenna.

KEY FEATURES

- Universal adjustable base, fits angled decks and sloping transoms
- Supplied with two support modules, providing max fore/aft support
- Available in 1.9m and 2.5m heights
- Easily removed for racing or winter storage

ACCESSORIES

Lifting Crane, Deck Flood Light, Light and GPS / VHF Antenna Mounts

SC2 Pole System

For larger radomes, open-array and larger satcom/tv antenna.

KEY FEATURES

- Deck mounted option available as 1m length
- Ideal for installing larger antennas on cabin roofs, low arches and areas where minimal elevation is required
- Through deck option is available in 3m and 4m lengths to provide max stability for heavier antennas
- Unique collar system clamps pole at deck level and inside boat

ACCESSORIES

Lifting Crane, Deck Flood Light, Light & GPS/VHF Antenna Mounts

NEW FOR
2008



POWERBOAT PRODUCTS

SCANSTRUT POWER TOWER

Composite PowerTower®

For radomes and small satcom/tv antenna

KEY FEATURES

- Monocoque structure for outstanding strength and surface finish
- 30° aft leaning stylish profile
- Choice of 150mm or 350mm heights
- Small 200mm base footprint to fit narrow radar arches

Stainless PowerTower®

For radomes, open-array and small satcom/tv antenna.

KEY FEATURES

- Mirror finish 316 marine grade stainless steel
- 30° aft leaning stylish profile
- Raises antenna by 150mm
- Smallest PowerTower® footprint – just 150mm

Aluminium PowerTower®

For radomes, open array and small satcom/tv antenna.

KEY FEATURES

- Marine grade 6082 aluminium
- 25° forward leaning profile for radomes, 30° aft leaning for open-array installations
- Choice of 130mm or 250mm heights
- Small base footprint, 180mm square

Dual PowerTower®

For radomes or open-array antenna and 40cm or 60cm satcom/tv antenna.

KEY FEATURES

- Eliminates antenna interference and ensures max performance from both antennas
- Integral cable management system, cables hidden from view
- Minimal mounting area required
- **NEW!** Nav Light Gantry Mount accessory

Compact Dual PowerTower®

For radomes and 30cm satcom/tv antenna.

KEY FEATURES

- Lightweight mount, only 3.4kg
- Low profile, ideal for smaller power boats
- Adjustable radar mounting plate, ensures near perfect antenna weight balance

Satcom/TV PowerTower®

For 30cm, 40cm and 60cm satcom/tv antenna.

KEY FEATURES

- Marine grade 6082 aluminium
- Raises antenna by 300mm for maximum performance
- Hollow stem, cables routed neatly inside

POWERTOWER® ACCESSORIES

Gantry Mount, Light, GPS & VHF Antenna Mounts and 4° Base Wedge

SCANSTRUT SATCOM ANTENNA MOUNTS

Satcom Dome Mounts

For 30cm, 40cm, 60cm and 80cm satcom/tv antenna.

KEY FEATURES

- Reduce antenna footprint by up to 60%, providing greater choice of antenna position
- Adapter mount fixings hidden internally
- Watertight installation, watertight seal and gland systems

ACCESSORIES

Adjustable Base Wedge (provides level mounting platform for antenna)



Combi Displays, AIS & Instruments

FURUNO NAVNET 3D

Multifunction Navigation System

A groundbreaking navigation system that introduces new concepts in user interface design that makes this powerful system easy to use. NavNet 3D introduces a new dimension to charting with Full Time 3D chart rendering - choose traditional 2D top-down view or pan/zoom the chart to any 3D angle instantly - there's no delay switching to "3D mode" as with other chartplotters as NavNet 3D operates in this 3D environment at all times. The cutting edge "Time Zero" technology gives instant chart zoom, panning and display mode changes seamlessly with no lag.

With NavNet 3D's true 3D environment, you can see all the information you want - radar overlay, AIS, chart symbols, depth soundings etc. Choose the type of charts you want to view - raster, vector or combine them with Furuno's Satellite Photofusion charts, giving unprecedented control over your charting environment.

FURUNO MFD8 & MFD12

NavNet 3D 8.4in & 12.1in Combi Displays

Choose between an 8.4in or 12.1in colour sunlight-viewable displays with high brightness and anti-reflective glass coating that allows use even in direct sunlight. The low profile design is ideal for flush mounting or can be bracket mounted.



NEW FOR 2008

KEY FEATURES

- 8.4in TFT 640x480 pixel or 12in TFT 800x600 pixel displays
- Up to 2,000 waypoints, 200 routes, 100 waypoints per route
- Head up, course up, North up, relative motion or true motion display modes
- True 3D environment for a more instinctive chart presentation
- Simple, intuitive operation using the Rotokey and Scrollpad controls
- Dedicated 3D button - toggle between 2D perspective and favourite 3D angle
- High-resolution satellite photography can be fused with raster or vector chart information, viewable in 2D or 3D
- No preset chart scales - zoom to the exact magnification level you wish
- New Ultra High Definition (UHD) Digital Radar
- 3D chart-radar overlay (requires SC30 or SC50 satellite compass input)
- Furuno Digital Filter (FDF) Fish Finder

ORDER CODE 8IN COMBI - ZFURMFD8
ORDER CODE 12IN COMBI - ZFURMFD12

FURUNO NAVNET 3D BB

NavNet 3D Black Box Navigation Systems

The NavNet 3D BB system offers all the features of the MFD8/MFD12, linking a powerful NavNet3D black box processor with a range of LCD displays, from 12.1in up to 17in.



KEY FEATURES

- 12.1in TFT Display Control Unit with integral keypad
- 12.1in SVGA marine monitor, 800x600 pixels
- 15in XGA marine monitor, 1024x768 pixels
- 17in SXGA marine monitor, 1280x1024 pixels
- Dedicated control keyboard

ORDER CODES - CALL FOR DETAILS

FURUNO FA30

AIS Module

The FA30 brings AIS to the Furuno NavNet2 and NavNet 3D systems. Real time AIS information can be incorporated into radar or chartplotter displays, including Closest Point of Approach and Time to Closest Point of Approach which aids in recognising possible collision dangers.

KEY FEATURES

- Targets displayed with SOG/COG vectors
- Displays full AIS data of target vessel
- PC interface via Ethernet connection
- Supplied with AIS Viewer software
- NMEA0183 output to third party systems



ORDER CODE - ZFURFA30

FURUNO FI50

Instrument System

The Furuno FI50 instrument system is designed to meet the needs of all sail and power vessels, providing a wide variety of precise information even under the harshest conditions and enhancing your safety at sea. Fully Plug and Play, each display uses standard NMEA2000 connectors and cabling and can be integrated with any NavNet 3D or other NMEA2000 compatible system.

KEY FEATURES

- Bright backlit displays with wide viewing angles
- Auto-Backlighting feature minimises power consumption
- NMEA2000 interface offers "Plug and Play" networking
- Easy installation with flush-mount design
- Ideal for mast or bulkhead mounting configurations
- White face "F1 Style" gauges provide maximum contrast and visibility
- Organic Light Emitting Diode (OLED) backlighting reduces power consumption

INSTRUMENTS AVAILABLE

- Multi - multifunction digital display with large, clear characters
- Digital - multifunction three-line digital combination display
- Wind - analogue 360° wind display
- Close Haul - analogue close hauled/running display
- Course Pilot - analogue compass/steering display
- Rudder - analogue rudder angle display

ASK US ABOUT INSTALLATION



ORDER CODES - CALL FOR DETAILS

Turn to the back page for pricing and ordering info NOW!

Combi Displays, Chartplotters, GPS & Navtex

FURUNO NAVNET2

Multifunction Navigation Displays

Advanced integrated navigation system incorporating GPS, chart plotter, radar and fish finders. Available as 7in colour and 10.4in colour LCD TFT display..



KEY FEATURES

- Supplied standard as Chartplotter or Chartradar
- Ethernet based network
- Multiple display option
- Each display operates as an individual unit or as part of the network
- Over 50 different display modes
- Common user interface and control panel
- Selectable background colours
- Optional NTSC/PAL interface for TV/VCR/DVD/PC video input (10.4in only)

NAVIGATION FEATURES

- 12 channel network GPS antenna
- C-Map Max chart compatible
- Head-up, North-up, Course-up and True Motion Radar display modes
- Course Plot, Alpha-numeric Nav Data, Steering and Highway display modes
- 8000 trackpoints, 1000 waypoints, 200 routes

RADAR FEATURES

- Radar power output ranges from 2.2kW to 6kW
- Split screen and Radar overlay
- Dual EBLs and VRMs
- Radar Guard Zone

ECHOSOUNDER FEATURES (REQUIRES ETR6)

- Dual-frequency (50/200kHz), 600W or 1kW RMS fishfinder option

ORDER CODES - CALL FOR DETAILS



MAXSEA NAVNET

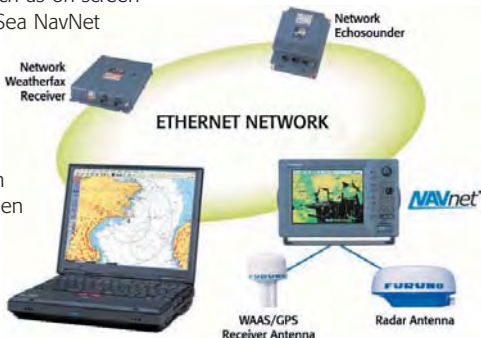
Navigation Software

Produced exclusively for Furuno, MaxSea NavNet is a comprehensive user-friendly navigation tool offering increased efficiency and exclusive capabilities including seamless chart display, advanced weather forecast overlay, real-time 3D seabed images and more. Its intuitive tool palette makes operation fast and easy.

Analyse data from multiple sources by integrating with the NavNet system, sharing data from radar, GPS, echosounder, weatherfax receiver and more. This allows advanced features such as on-screen radar chartoverlay. But MaxSea NavNet takes the overlay facility one stage further, enabling you to overlay information on top of the chart - tracks, marks, hazards, currents, water temperature etc. Each layer can be shown and hidden with a single mouse click.

KEY FEATURES

- Shared navigation data with the NavNet network
- Full control of NavNet displays
- Compatibility with most chart formats, both raster (ARCS, Mapmedia, Seafarer, Maptech, NDI, Softchart) and vector (S57, C-Map 93 and NTPC)
- Advanced ARPA and AIS mobile target tracking
- Free up to date ocean conditions and weather forecasts via email
- PBG (Personal Bathymetry Generator) creates 2D and 3D images of the seabed



ORDER CODE - CALL FOR DETAILS

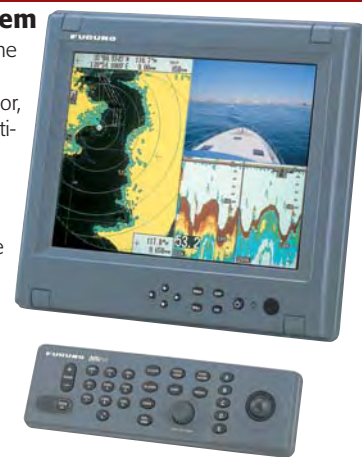
FURUNO NAVNETBB

Black Box Multifunction System

Now get NavNet with a larger display! The NavNet Black Box system separates the display from the control unit and processor, allowing you to use virtually any size multi-sync PC monitor with a VGA input.

KEY FEATURES

- Standard external video input/output
- Radar options from 18in 2.2kW radome up to a 6.5ft 12kW open array, max range of 72nm
- Off-center, Echo trail, North Up modes
- True or Relative Motion etc
- Chart-radar overlay
- 11 - 40V DC



ORDER CODES - CALL FOR DETAILS

FURUNO GP7000 & GP7000F

Colour 7in Widescreen Chartplotter and Chartsounder

Colour Chartplotter or Chartsounder with Course Plot, Nav Data, Steering and Highway display modes. The 50/200 kHz dual frequency echosounder can be displayed full or split screen with the course plot mode.

KEY FEATURES

- Available as a chartplotter (GP7000) or combination chartsounder (GP7000F)
- User friendly operation with rotary control and softkeys
- Dual chart slots
- North up, course up or auto course up
- 5000 waypoints, 200 routes, 12,000 trackpoints
- 600W or 1kW dual frequency 50/200kHz echosounder, max depth 1200m
- Bottom-lock, Bottom-zoom, Marker-zoom, A-scope



ORDER CODE GP7000 - ZFURGP7000
ORDER CODE GP7000F - ZFURGP7000F

FURUNO GP32 & GP37

Fixed GPS

High performance GPS navigator with large backlight waterproof display. Available as a 12 Channel WAAS enabled GPS (GP32) or dGPS (GP37).

KEY FEATURES

- Navigational data, track plotter and highway displays
- Graphic and numerical data display
- Up to 950 waypoints, 50 routes, 1,000 trackpoints
- Low power consumption - less than 3W
- NMEA output



ORDER CODE GP32 - ZFURGP32
ORDER CODE GP37 - ZFURGP37

FURUNO NX300D

Dual Mode Navtex Receiver

One of our most popular products, this compact dual frequency (518/490kHz) unit has a high contrast 4.5in display and receives current and early warning weather reports and navigation alerts worldwide, within 200-400nm of shore.

KEY FEATURES

- Printout available via PC
- Can be used as a Nav data repeater
- Low power consumption

SUPPLIED WITH

Antenna



ORDER CODE - ZFURNX300D

Navigation & Communication

FURUNO M1623

6in Mono LCD Radar

BEST SELLER! A great value high contrast, low power consumption LCD radar which gives detailed images of coastline and targets at short ranges thanks to narrow pulselengths and dual IF bandwidths. The display is waterproof, making it ideal for cockpit or flybridge installation.

In the Watchman mode, the antenna is stopped and the screen displays nav data only. The radar wakes up at a specified time interval and operates for 1 minute. If a target enters the guard zone, an alarm sounds and the radar goes into its normal operating mode. The alarm may also be set to trigger if a target leaves the guard zone.

KEY FEATURES

- 15in 2.2kW radome, max range 16nm
- Excellent screen clarity, day and night modes
- Normal, Off-Centre & Watchman operating modes
- EBL, VRM, TLL output (Target Lat/Long), Cursor Lat/Long input/output, Echo Trail, Guard Zone Alarm

OUR VERDICT

The best radar you'll pick up for under £1000. Great performance and excellent value for money.



- 12 range scales
- Interface with GPS and chart plotter
- Waypoints displayed as "lollipop" marks
- Automatic receiver tuning
- Automatic sensitivity and anti-clutter controls

SUPPLIED WITH

2.2kW 15in radome antenna & 10m cable

ORDER CODE - ZFURM1623

FURUNO SC30

Satellite Compass



Revolutionary 2-antenna satellite compass that provides highly accurate attitude data to equipment such as radars, chartplotters, autopilots, AIS etc. The all-in-one design integrates perfectly with all NavNet combi displays and the FI-504 instrument display, but NMEA2000 output means it can be used with any compatible third party equipment.

KEY FEATURES

- Heading accuracy of 1.0°rms
- Short start-up time of 3 minutes
- Follow-up rate of 45°/s exceeds requirements for high speed craft
- NMEA2000 interface standard

ORDER CODE - ZFURSC30

FURUNO SC50

4.5in LCD Satellite Compass



GPS-based compass offers unrivalled accuracy of up to 0.8°, ideal for Radar, AIS, ECDIS or any equipment that normally requires a gyrocompass.

KEY FEATURES

- Four display modes - Compass Rose, Steering, Nav Data and Heading
- Tri-antenna reduces effect of roll, pitch and yaw
- Heading output in NMEA0183, IC 61162-1 and AD-10 (25ms update)
- Short settling time - only 4 minutes

ORDER CODE - ZFURSC50

FURUNO NAVPILOT 500

Inboard Autopilot System



Modular system for sail and power. The control unit features a 4.6in LCD display, rotary control knob and dedicated function keys. Advanced self-learning steering algorithm adjusts to suit the boat's speed, trim and draft as well as tide, wind and weather effects.

KEY FEATURES

- Advanced Auto automatic ground tracking control
- FishHunter feature steers boat in a holding pattern around target when connected to fishfinder or radar
- NavNet compatible

ALSO AVAILABLE

- NavPilot 511 - all the features of the NavPilot 500, but with a compact control head

SUPPLIED WITH

Control unit, course computer, heading sensor and rudder feedback unit. Drive must be specified.

ORDER CODES - CALL FOR DETAILS

FURUNO FM2721

Fixed VHF Radio

Easy to use Class D DSC VHF that includes all International, US marine and weather channels. Fully featured handset with Distress Alert button in cradle.

KEY FEATURES

- Clear backlit LCD display
- Numeric keypad channel selection
- Dual channel watch

SUPPLIED WITH

Cradle, loudspeaker, transceiver module

ORDER CODE - ZFURFM2721



FURUNO FCV620 & FCV585

5.6in & 8.4in LCD Colour Fishfinders

Fantastic new high performance 5.6in (FCV620) and 8.4in (FCV585) 50/200kHz dual frequency fishfinders with wide angle sunlight viewable displays. Selectable single, dual, zoom and Nav data modes.



KEY FEATURES

- **FCV620** - 5.6in display, 600W output
- **FCV585** - 8.4in display, up to 1kW output (requires MB-1100 matching box)
- Rotary knobs for gain and mode select
- Digital filter adjusts gain, STC and output power for outstanding detection in shallow and deep water
- Cruising and fishing auto modes
- Fast pulse transmission rate for outstanding shallow water echo presentation
- TLL output for GPS plotter display
- 8/16/64 colour echo presentation for displaying subtle echo images
- Customised nav data display when interfaced with appropriate sensors
- Swivel mount bracket or flush mountable

ORDER CODE FCV620 - ZFURFCV620

ORDER CODE FCV585 - ZFURFCV585

FURUNO LS4100 & LS6100

5in & 6in LCD Mono Fishfinders

Easy to use dual frequency mono 5in (LS4100) and 6in (LS6100) fishfinders with the highest resolution display in their class.



KEY FEATURES

- 50/200kHz, 300W RMS, max depth 500m
- White Line and "Sea-Through" technology discriminates echoes from the sea bed
- Unique bottom lock fish alarm provides consistent audible bottom fish detection in varying depths
- Displays speed and wind data if interfaced with relevant sensor
- Mini-navigator feature provides 12 "goto" waypoints with programmable names

SUPPLIED WITH

Transducer must be specified when ordering

ORDER CODE LS4100 - ZFURLS4100

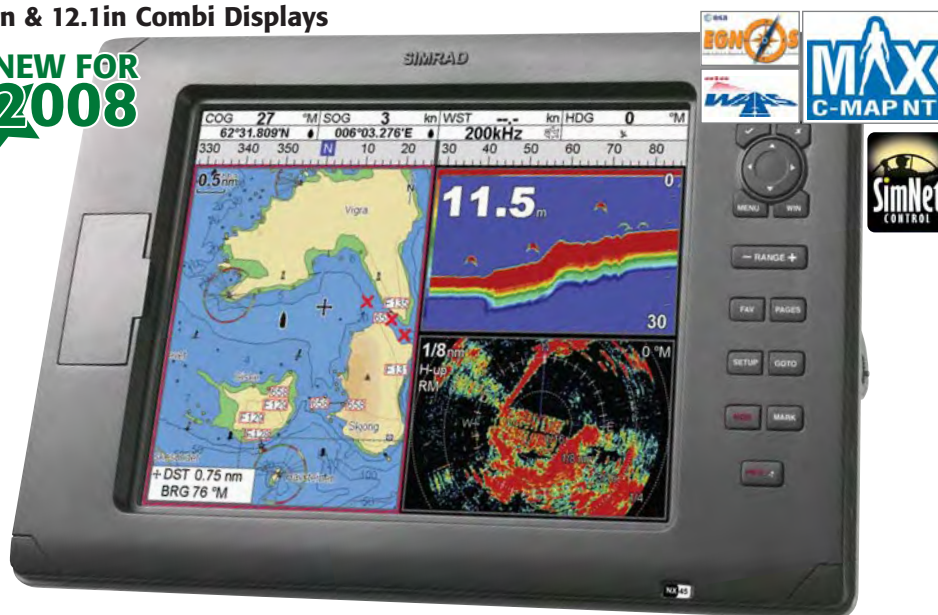
ORDER CODE LS6100 - ZFURLS6100

Combi Displays, Instruments, Autopilots & VHF Radios

SIMRAD NX40 & NX45 NAVSTATIONS

8.4in & 12.1in Combi Displays

NEW FOR 2008



The new NX40 and NX45 NavStation systems are designed to meet the requirements for both power and sail-boats. The 8.4in NX40 and 12.1in NX45 feature easy to use controls and a sunlight viewable bonded high-resolution TFT colour display, perfect for presenting the detailed bottom contour data, land data, aerial photos of harbours and inlets, Dynamic Surface Currents, Tidal Predictions, Flashing NavAids and other features of the advanced C-Map MAX cartography. The dual chart slots enable two charts to be displayed simultaneously.

KEY FEATURES

- C-Map MAX enhanced cartography
- 2kW & 4kW radome, 6kW open array radar options
- Inbuilt 600/1000W high performance echosounder
- NMEA2000-based SimNet compatibility - interface with Simrad instruments, autopilots and VHF radios

- NMEA0183 interfacing with third party products
- AIS integration - display vessel positions and information directly on the chart display
- Fuel and engine monitoring
- Video input for cameras etc

ORDER CODE NX40 - CALL FOR DETAILS

ORDER CODE NX45 - CALL FOR DETAILS

SIMRAD IS20

Instrument System

The new IS20 range consists of two digital and four analogue displays. The multi-function Graphic display can shift quickly between a range of large, easy-to-read digital readouts from the SimNet data bus. The digital Combi speed/depth system is ideal as a stand-alone system and can also be remotely controlled from an IS20 Graphic, making it ideal as a second instrument station, offering a variety of digital data combinations including Speed, Depth, Temperature, Trip Log and Passage Time. The classic analogue Compass, Rudder Angle, Wind Direction and Tack displays complete the IS20 range.



KEY FEATURES

- SimNet data bus integration
- Flexible multifunction digital displays
- Easy to read analogue displays
- Thin SimNet cables make installation easy
- Plug-and-play operation
- New SimNet single multi-transducer provides all-in-one speed, depth and temperature data

NEW FOR 2008

ORDER CODES - CALL FOR DETAILS

SIMRAD AP24 & AP28

Inboard Autopilot Systems

Building on Simrad's legendary autopilot expertise, the new AP24 and AP28 autopilot systems integrate seamlessly with the new IS20 instruments and NX40/NX45 combi displays via Simrad's high speed SimNet data bus. Virtual Rudder Feedback means that no rudder feedback unit is needed for outboards and stern drive boats. Automatic Tuning compensates for the unique handling characteristics of your boat and sea conditions, ensuring optimum performance. Advanced Wind Steering provides unbeatable autopilot performance for any sailing vessel.



KEY FEATURES

- Multi station operation
- Suitable for all steering types, sail and power
- Complete set of Turn Patterns including Depth Contour Tracking, programmable S-turn, Zig-Zag, Continuous turn, Square patterns and many more
- Improved steering with full Rate Of Turn control
- No Drift Course - maintain set Course Over Ground even in severe wind and current conditions

ORDER CODES - CALL FOR DETAILS

SIMRAD WR20

Wireless Handheld Controller

Total control in your hands!

The WR20 RemoteCommander is the first remote control that acts as a wireless VHF handset and can both display data and control the entire onboard electronics system including VHF, Autopilots, Instrumentation & NavStations.



EXPERT ADVICE

KEY FEATURES

- Rugged waterproof handset
- Easy to use - primary functions of all systems can be accessed with the minimum of button presses
- Keypad lock
- Fully customisable display
- Advanced, high capacity rechargeable Li-Ion battery is charged whenever handset is placed in its cradle
- Control the autopilot from anywhere on board
- Easy course adjustment using the NavPad
- Heading information display
- Remotely control Radar, ChartPlotter or Sounder
- Change views, zoom, scroll cursor
- Full MOB control from anywhere
- Make VHF calls from the handset
- Easy volume and squelch adjustment
- Call crew on the intercom

ORDER CODE - ZSIMWR20

SIMRAD RS86/RS87

Multi Station System VHF



Modular VHF system with a choice of two different stations - a fully featured handset (RS87) or a fixed panel display (RS86). DSC Class D with single key access to All Ships and Distress Alert category calls under a lift up cover. Display and control DSC call information on your NX40 and NX45 NavStations.

KEY FEATURES

- Up to four stations
- Scrambler option
- Dual Fog and Loudhailer options
- Intercom speakers option
- NOAA Weather alert
- SimNet compatible

ALSO AVAILABLE

- RS81 single station & RS82 dual station VHF radios

ORDER CODE RS86 - ZSIMRS86F

ORDER CODE RS87 - ZSIMRS87



We accept most major credit and debit cards



Chart Plotters, Combi Displays, GPS & Autopilots

LOWRANCE GLOBALMAP 5150C

5in Colour Chartplotter

Low budget / high performance colour chartplotter offering exceptional value for money. Supplied complete with detailed NauticPath cartography covering the whole of the UK, European Atlantic coastline and parts of the Mediterranean.

KEY FEATURES

- 5in sunlight viewable SVGA TFT screen
- 12 channel WAAS/EGNOS GPS
- NMEA0183 and NMEA2000 input/output
- Up To 100 savable / retraceable plot trails
- Up To 10,000 points per trail
- SD / MMC card slot
- Submersible

ALSO AVAILABLE

- 5200C - LowranceNET ready, external antenna
- 5300C - LowranceNET ready, internal antenna
- LMS520C - Combination chartplotter and echosounder



EDITOR'S CHOICE



ORDER CODE 5150C - ZLOW116-32NP
ORDER CODE 5200C - ZLOW123-37
ORDER CODE 5300C - ZLOW116-29
ORDER CODE LMS520C - ZLOW123-36

ASK US ABOUT
INSTALLATION

LOWRANCE GLOBALMAP 7200C

7in Colour Chartplotter

An exceptional, high-end colour GPS+WAAS that includes a large 7in colour high resolution SVGA display. Capable of recording trip details and loading custom mapping with its waterproof memory card drawer that accepts up to two MMC/SD memory cards. NMEA 2000® compatible for networking.

KEY FEATURES

- 7in, 256 colour sunlight viewable SVGA TFT Screen
- 480x640 pixel resolution
- Comes with blank MMC card and MMC card reader
- LowranceNET radar ready



ORDER CODE - ZLOW123-22



SEEN IT FOR LESS?
WE WILL NOT BE BEATEN ON PRICE!

LOWRANCE I-FINDER H20C

Colour Handheld GPS

Superb value for money handheld GPS with a 2.83in high resolution colour display with excellent sunlight and low-light/night viewing. Compatible with Navionics Gold, Lowrance FreedomMaps, Fishing Hot Spots Elite, LakeMaster Pro Maps & NauticPath charts.

KEY FEATURES

- 16-channel GPS WAAS precision
- Runs on 2xAA batteries - up to 12hrs use
- Antenna port for optional external GPS antenna
- Dual processors for higher speed screen updates and scrolling
- Easy/Advanced operation modes
- MMC/SD digital media memory card slot for mapping and recording capabilities
- 1,000 waypoints/1,000 event markers/100 routes
- Up to 100 savable and retraceable plot trails, with up to 10,000 points in any trail
- 40 map zoom ranges, 0.02-4,000 miles
- 42 graphic icons to mark special spots
- Internal back-up memory
- Easy point-and-map cursor navigation/route planning
- Waterproof to IPX7 standard
- 12-volt plug power adapter



ORDER CODE - ZLOW112-67



LOWRANCE GLOBALMAP 8200C & 9200C

8in & 10.4in Colour Combi Displays

High-end colour combi display featuring a large 8in (8200C) and 10.2in (9200C) colour 800x600 pixel SVGA SolarMAX™ displays. Capable of recording trip details and loading custom mapping with its memory card drawer that accepts up to two MMC/SD memory cards. Lowrance radar ready, it's compatible with Navionics Gold charts plus Lowrance's own FreedomMaps, Fishing Hotspots, Elite, LakeMaster Pro and NauticPath maps.



KEY FEATURES

- Comes with blank MMC card and MMC card reader
- NMEA2000 compatible



ORDER CODE 8200C - ZLOW123-48
ORDER CODE 9200C - ZLOW123-24

LOWRANCE LCX27C, LCX37C & LCX112C

7in, 8in & 10.4in Colour Chartplotter/Fishfinders

These units combine a fully featured chartplotter that's compatible with Navionics Gold charts as Lowrance's own FreedomMaps, Fishing Hotspots, Elite, LakeMaster Pro and NauticPath maps with a powerful 8000W dual frequency fishfinder.



KEY FEATURES

- Dual frequency 50/200kHz 8000W fishfinder, max depth 915 m
- Split screen chart and fishfinder display



ORDER CODE LCX27C - ZLOW123-10
ORDER CODE LCX37C - ZLOW123-43
ORDER CODE LCX112 - ZLOW117-92

EAGLE ETP10, ETP22 & ETP32

Cockpit Tillerpilots

Eagle's Tillerpilots offer superb reliability, power and low current consumption along with supreme course keeping ability and quiet operation.

KEY FEATURES

- Waterproof double sealed design
- ETP10 - Budget standalone Tillerpilot
- ETP22 - Faster hard over time plus NMEA compatibility
- ETP32 - High performance pilot with 85kg thrust & ultra-fast hard over time.

SUPPLIED WITH

Mounting kit, deck socket (ETP22/32 only)

ALSO CONSIDER

- Raymarine ST1000+, ST2000+



EDITOR'S CHOICE

ORDER CODE ETP10 - ZEAGETP10
ORDER CODE ETP22 - ZEAGETP22
ORDER CODE ETP32 - ZEAGETP32

TACKTICK MICRONET WIRELESS INSTRUMENTS

Tacktick's revolutionary instrument system sets you free from the inconvenience of traditional instrument systems - these unique instruments are wireless, which means that they are easy to install - a typical installation can be done in just a few hours as there is no need to drill holes in bulkheads, run cables through headlining or down the mast. The displays are solar powered with integrated lithium batteries that power the unit for life. Power consumption is so efficient that units can run autonomously for up to 300 hours.

For yachtsmen looking for performance advantage the elimination of wires in the mast not only reduces spar weight but also lowers the boats centre of gravity. Position the displays where you want them - with clip in cradles, displays can be positioned anywhere on the boat so you can view the information where and when you need it.

All Tacktick products are sealed for life and are totally waterproof (submersible to 10m), which also eliminates condensation. With no cabling, reliability is also increased since wiring faults typically account for 80% of system problems on boats.



TACKTICK T100 SPEED/DEPTH

Bidata System

The Tacktick Speed/Depth system is a compact solution for those on a budget or where space is limited. The single display shows boat speed, depth and distance travelled.



KEY FEATURES

- Speed, Depth and Distance
- Complete system in one box
- Quick to install
- Easy to expand system
- Cost effective solution

SUPPLIED WITH

Dual digital display, through hull speed and depth transducers, hull transmitter

ORDER CODE - ZTACT100

TACKTICK T105 CRUISE PACK

Speed & Depth System

The T105 Speed & Depth system offers great value for money, consisting of everything you need to get started. The two displays feature large, clear digits.



KEY FEATURES

- Speed, Depth and Distance
- Complete system in one box
- Quick to install
- Easy to expand system
- Cost effective solution

SUPPLIED WITH

Two digital displays, through hull speed and depth transducers, hull transmitter

ORDER CODE - ZTACT105

TACKTICK T104 CRUISE PACK

Speed, Depth, Wind, NMEA System

This great value package is ideal for sailboats of all sizes, coming complete with a dual digital display and an analogue display. The system can be interfaced with third party equipment via the wireless NMEA interface (included).



KEY FEATURES

- Complete solution in one box
- Speed, Depth, Distance
- Wind Speed and Direction
- Calculated functions
- Connectivity to wired systems
- Cost effective solution

SUPPLIED WITH

Dual digital display, analogue display, through hull speed and depth transducers, wind transducer, hull transmitter, wind transmitter, NMEA interface

ORDER CODE - ZTACT104

TACKTICK T101 WIND

Bidata System

The wireless T101 Wind System does away with all the inconvenience of installing a traditional wind system - there's no cable to be run down the mast, meaning the mast doesn't need to be stepped, plus the weight saved improves the yacht's performance. The large clear 'analogue' display shows wind direction (both 360° and close hauled) and wind speed.



KEY FEATURES

- Wind Speed and Direction
- No Cables
- Easy to install
- Easy to expand system
- Also available - T107 Powerboat Wind System

SUPPLIED WITH

Analogue display, wind transducer, wind transmitter

ORDER CODE SAILBOAT WIND - ZTACT101

ORDER CODE POWERBOAT WIND - ZTACT107

TACKTICK T106 REMOTE DISPLAY

Handheld Wireless Remote Display

Not just a remote control, this is an independent Micronet wireless palm sized display. The dot matrix screen not only shows all system data, but it also incorporates a rolling road as well as performance pages for displaying uploads from tactical software, and it can function as a remote control for Micronet displays. Add as many handsets as needed for key crew members.

KEY FEATURES

- Wireless handheld display
- Repeats a wide range of data
- Palm sized, easy to hold
- Totally multifunction
- Graphic multi-line display
- Solar powered
- Can be used with other manufacturers' equipment

SUPPLIED WITH

Remote display, universal wireless NMEA interface

ORDER CODE - ZTACT106

SEEN IT FOR LESS?
WE WILL NOT BE BEATEN ON PRICE!

EDITOR'S CHOICE

TACKTICK T210 MAXI DISPLAY

Wireless Mast Repeater

Features high contrast, 50mm digits for highly visible and accurate data in all conditions. Customise the display to show only the data options you want, or use the innovative Auto Leg function which changes the display automatically to show the info you need for each leg of the course without the need to press a button. Control is provided by the Remote Display.



KEY FEATURES

- Displays any single data type
- Line Bias, Wind Shift and Timer functions
- Set, Drift, Turn and Course to Steer functions
- Backlighting to 3 levels, in orange or red
- Totally waterproof (submersible to 100m)
- Lightweight - weighs only 360g

ORDER CODE - ZTACT210

We accept most major credit and debit cards



Chartplotters, Radar Enhancer

GEONAV 4 GIPSY

Colour Handheld Chartplotter

The world's first Navionics Platinum handheld chartplotter!

Weighing less than 300g and with a 9hr battery life, the Geonav 4 Gipsy is designed to use Navionics Land&Sea charts. This versatile and powerful unit is equipped with a 12 channel WAAS-EGNOS GPS, world basemap and a transfective TFT 3.5in backlit LCD that offers outstanding graphical performance under all visibility conditions.

Also available is the Geonav 4CSX, which includes land and marine charts at maximum detail on a single cartridge, with voice prompted road navigation - ideal for both onboard and in-car use.

KEY FEATURES

- Compatible with Navionics Land&Sea, Platinum and Land&Sea Platinum charts
- Optional external antenna
- Waterproof (IPX7)
- Visual and acoustic Anchor Alarm
- Save unlimited markers, routes and waypoints on CompactFlash cartridge
- Autozoom™
- Easy View
- Runway display
- Tide & currents data
- Overzoom
- Chart rotation

OPTIONAL ACCESSORIES

Bike mount bracket, car mount bracket, boat mount bracket, earphone, cigarette lighter power cable, mains adapter, speaker with cigarette lighter plug cradle, carrying case



ORDER CODE GEONAV 4 GIPSY - ZGEOGY
ORDER CODE GEONAV 4CSX - ZGEO4CSLB

GEONAV 7 WIDE

7in Colour Chartplotter/Fishfinder

Featuring a sunlight view transfective TFT LCD display guaranteed against fogging and condensation and an inbuilt 12 channel GPS. New data windows are optimised for intuitive control and the split screen function enables chart and fishfinder data to be displayed simultaneously. The unit can be linked to the Geonav F170 black box fishfinder. Unlimited markers, routes and waypoints can be saved on CompactFlash cartridges.

KEY FEATURES

- 2D or 3D cartography, built-in world map
- Waterproof (IPX6), panel, bracket or flush mounting
- Acoustic Anchor Alarm
- Autozoom™, Easy View
- EBL/VRM
- Runway display
- Overzoom, Screen Amplifier™



ORDER CODE - ZGEO7C

SEA-ME

Active Radar Target Enhancer

Increase the probability that your boat will be seen on ships' radar with this affordable active device. Unlike traditional passive radar reflectors which merely attempt to create a larger radar echo, the Sea-me Radar Target Enhancer is an active system which receives a radar signal, amplifies it and re-transmits it. This ensures a stronger return signal and a more even strength around the full 360° azimuth.

KEY FEATURES

- Creates a boosted radar image equivalent to an object of 63sq m max (34sq m average)
- Up to 6 times the performance of standard passive radar reflectors
- Performance is less affected by heel than standard passive radar reflectors
- Active system emits a stronger signal than it receives
- Operates at X Band (9.32-9.5GHz)
- Indicates when vessel is struck by radar pulse
- Instantly available at the flick of a switch
- Small, light (410g) and easy to install
- Can be fitted using a standard 14TPI antenna mount
- Low power consumption (60mA idle, 260mA transmitting)
- Suitable for sailing yachts, motor cruisers and RIBs



SUPPLIED WITH

Antenna, 24m cable, control box

OUR VERDICT

A very effective solution to a major safety concern for small boat owners.

ORDER CODE - ZSEA500.010

GEONAV 3

Handheld Colour Chartplotter

The Geonav3 is an ultra-compact Navionics Platinum marine, road and skiing navigator. It features a 2.2in transfective 240x320 pixel TFT display and a rechargeable lithium battery with a battery life of 9hrs. It is available in two versions: Geonav3 & Geonav3S, which includes a magnetic compass and barometer.

KEY FEATURES

- Navionics Land&Sea, Platinum and Land&Sea Platinum chart compatible
- Exclusive Navionics Outdoor cartography for skiers - ski lifts, access points, map reference photos, refuges, restaurants, ticket offices and pistes

SUPPLIED WITH

Panel Adapter, cradle, cigarette lighter adaptor, case, neck case, mains charger



NEW FOR 2008

ORDER CODE GEONAV 3 - ZGEO3
ORDER CODE GEONAV 3S - ZGEO3S

GEONAV 5 TOURING

5in Colour Navigator/Fishfinder

Innovative unit combining chartplotter, fishfinder and in-car navigator in one package. Inbuilt 12 channel WAAS-EGNOS GPS and world map.

KEY FEATURES

- Compatible with F170 black box fishfinder
- Navionics Land&Sea, Platinum and Land&Sea Platinum chart compatible
- Save unlimited markers, routes and waypoints on CompactFlash cartridge

SUPPLIED WITH

NMEA power supply cable, Quick-mount bracket with snap-on socket, sun cover



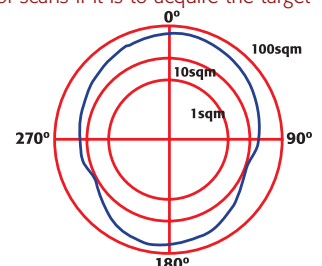
ORDER CODE - ZGEO5T

Tech info

Why Fit an Active Radar Target Enhancer?

At night, the range of the masthead light of a sailing yacht of less than 20m is only 3nm and of a sailing yacht of less than 12m only 2nm - a ship making 20kts will cover 3nm in only 9 mins. As they get bigger, travel faster and have lower manning on the bridge, the risk of collision or a close encounter increases. Therefore it's vital that small craft return a strong radar signal if they are to be seen in plenty of time for avoiding action to be taken by ships.

Consistency is also important since most ships today are fitted with ARPA (Automatic Radar Plotting Aid) which needs to obtain a return of 50% of scans if it is to acquire the target



Performance of the radar cross-section area of Sea-me

McMURDO SMARTFIND E5

406MHz EPIRB

The Smartfind E5 is a new ultra-compact 406MHz EPIRB. Once removed from its Carrysafe mounting bracket, the unit can be activated either manually or automatically by immersion in water. A hydrostatic release casing is also available.

Smartfind EPIRBs are programmed with a unique serial number which must be registered with the national authorities. Where permitted by these authorities, beacons can be re-programmed with the vessel's MMSI or Radio Call Sign.

KEY FEATURES

- Stylish and compact
- GMDSS compliant
- 121.5MHz homing transmitter
- Non hazardous battery for safe and easy transportation
- High brightness LED flashing locator lights
- Comprehensive diagnostic and self-test facilities
- 6 year battery life



ORDER CODE E5 - ZMCM185833

McMURDO SMARTFIND G5

406MHz GPS EPIRB

A new ultra-compact 406MHz EPIRB with an inbuilt 12 channel GPS giving location accuracy of less than 3m. Supplied with a Carrysafe mounting bracket, the unit can be activated manually or automatically by immersion in water. A hydrostatic release casing is also available.

Smartfind EPIRBs are programmed with a unique serial number which must be registered with the national authorities. Where permitted by these authorities, beacons can be re-programmed with the vessel's MMSI or Radio Call Sign.

KEY FEATURES

- Inbuilt 12 channel GPS
- GMDSS compliant
- 121.5MHz homing transmitter
- Non hazardous battery for safe and easy transportation
- High brightness LED flashing locator lights
- Comprehensive diagnostic and self-test facilities
- 6 year battery life



ORDER CODE G5 - ZMCM185835

McMURDO FASTFIND MAX+

406MHz GPS PLB

Handheld PLB with integral GPS featuring the same advanced technology found in the award winning Precision EPIRB. Designed using miniature components to fit into an ergonomically styled compact casing, it employs a simple 3 stage manual operation and features user replaceable battery packs. It is ideal for alerting the rescue services of an emergency during maritime, light aircraft and outdoor activities (where licensing allows).

KEY FEATURES

- Compact and lightweight
- 406MHz transmitter, 121.5MHz homing frequency
- Integral GPS receiver
- Battery life 5 years, transmission life 48 hrs



McMURDO FASTFIND MAX

406MHz PLB

All the features of the Fastfind Plus, but without the internal GPS. Alert signal to rescue services within 90 mins, typical positional accuracy to within 3nm

BOTH MODELS SUPPLIED WITH

Battery pack, case and lanyard

ORDER CODE FASTFIND MAX+ - ZMCM050.013

ORDER CODE FASTFIND MAX - ZMCM050.014



McMURDO S4 RESCUE

SART

A 9GHz X-Band Radar transceiver that has been designed for assisting air/sea ship or survival craft rescue operations in accordance with IMO GMDSS requirements. Once activated it will operate for over 96hrs in standby mode.

KEY FEATURES

- Ship or survival craft applications
- 5 year long life replaceable battery pack
- Audio/visual alarm
- Inbuilt test facility
- Internal/external mounting options

SUPPLIED WITH

Mounting bracket, lithium battery

ORDER CODE - ZMCM86-300-01A



ICS NAV6PLUS

Dual Channel Navtex Receiver

The large and easy to read backlit LCD display concentrates Navtex and NMEA data from your GPS or instrument system into one central point. An electronic logbook is updated at regular intervals and can be viewed on-screen or printed out via an optional printer.

KEY FEATURES

- Simultaneous dual channel Navtex receiver
- Sort messages by receipt time/date, station or category
- RS232 data output
- 12 volt operation

SUPPLIED WITH

Dual channel Navtex sensor with 10m cable

ALSO AVAILABLE

- **NAV6DUAL** - All the features of the NAV6PLUS, but without the GPS or NMEA repeater option
- **NAV6PLUS** - As the NAV6PLUS, but can be used with insulated shrouds, backstays or multifunction antennas instead of a dedicated Navtex antenna

ORDER CODE NAV6PLUS - ZICS916.01

ORDER CODE NAV6DUAL - ZICS916.00

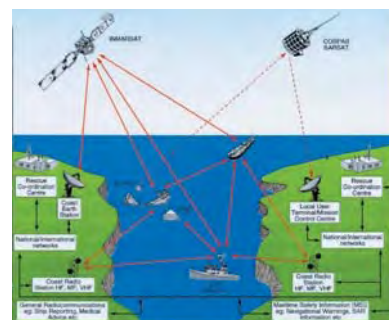
ORDER CODE NAV6PLUS - ZICS920.00



Find out more...

What is an EPIRB?

An Emergency Position Indicating Radio Beacon (EPIRB) is used to alert the Search And Rescue services in the event of an emergency. It transmits a coded message on the 406MHz distress frequency, which is detected by the COSPAS-SARSAT satellites. Emergency alerts are relayed to the closest Local User Terminal, which then forwards the information to the Mission Control Centre where the message is decoded. The distress details and vessel details (taken from the registration details) are then passed to the appropriate Rescue Coordination Centre who co-ordinate the relevant Search And Rescue authorities.



What's the difference between an EPIRB and a PLB?

Once the Search And Rescue service are in the area, they need to pinpoint your position directly. McMurdo's Rescue and Precision EPIRBs contain a 121.5MHz location transmitter for this purpose.

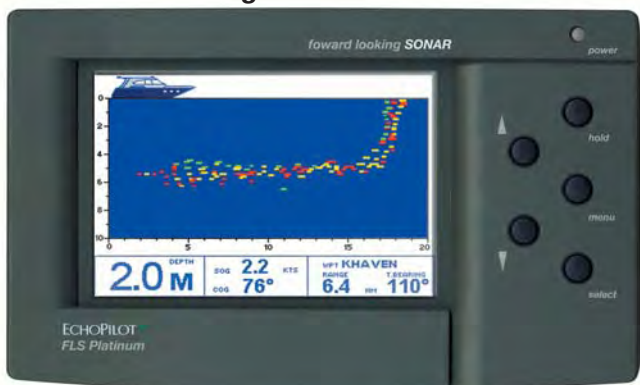
That's fine if you're with the EPIRB, but if you're in the water or have become separated from the vessel, you'll still want the rescue services to find you quickly and easily. A Personal Locator Beacon (PLB) transmits on the same 121.5MHz frequency, but is designed to be carried on your person - many quality foul weather jackets have a pocket on the sleeve for this purpose.

And what's a SART?

Generally deployed in the liferaft on a long pole, a Search And Rescue Transponder (SART) performs a similar function to a PLB, the difference being that a SART sends out a 9GHz signal which is detected by a ship's radar, appearing as a dotted line pointing to your position.

ECHOPILOT PLATINUM FLS

Colour Forward Looking Sonar



A colour FLS with the best range and performance yet. Developed with all the expertise gathered by Echopilot over 13 years of manufacturing Forward Looking Sonar. With greater resolution than previous models, the large transfective colour LCD can be seen in the brightest sunlight. The use of colour enables enhanced seabed interpretation - the colour of the target depends on its hardness and the strength of echo that it returns. The Platinum is NMEA compatible and can display GPS data. It is designed for flush mounting but there is an optional bracket for wheelhouse use.

KEY FEATURES

- Large colour sunlight-viewable display
- 200m forward range
- Optional wireless link between transducer and instrument for ease of installation
- Optional computer output for interfacing with on board computers

SUPPLIED WITH

200kHz professional transducer with 12m cable

ORDER CODE - ZECHPLSYS

ECHOPILOT BRONZE FLS

Forward Looking Sonar

If you're stuck for space but still want to fit an FLS, the Echopilot Bronze is ideal, contained in a standard 110x110mm instrument-sized case with the latest transfective LCD technology.

KEY FEATURES

- Simple two key operation
- Forward range 100m, depth range 50m
- Forward alarm
- Optional professional transducer for long keel boats over 35ft

SUPPLIED WITH

200kHz standard or professional transducer with 12m cable

ORDER CODE STANDARD - ZECH133.015
ORDER CODE PROFESSIONAL - ZECH133.016



Find out more...

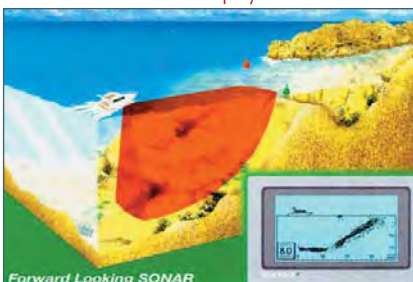
Real Time Forward Looking Technology Explained

Real Time means that the FLS doesn't gradually build up a picture, instead it scans the whole forward view and updates the screen several times a second. An obstruction ahead of the boat will be shown immediately.

The FLS displays a 2D profile of the seabed below and 3-5 times that depth ahead of the vessel on a flat muddy bottom. This increases to 8 or 9 times if the seabed shoals upward and more than this for a large target. Rocky bottoms give especially strong reflections and hard vertical surfaces like quay walls or reefs will often be seen at 150m or more.

In the vertical plane the FLS scans through 90° from straight ahead to straight down.

The FLS is not designed to be a fishfinder, it is a collision avoidance device. In reality it does pick up larger fish and sometimes shoals of smaller fish.



ECHOPILOT PLATINUM VIDEO FLS

Black Box Colour Forward Looking Sonar



Turn your combi display into a colour FLS repeater! Black box colour forward sonar which communicates via video signal with third party combi displays with a composite or S-Video input. Available in two versions - a video interface box to connect an FLS Platinum to a combi display, or a complete black box solution comprising transducer, skin fitting, cables, electronics box and control keypad which can be connected to any colour display or monitor with composite or S-Video input (display not supplied)

KEY FEATURES

- Compatible with Raymarine E series, Garmin 3000/4000 series, Furuno 10in NavNet, Simrad CX and Navman 8000 series and others - call for advice
- 200m forward range
- Improved performance
- Forward Alarm
- Digital Depth
- Speed Option
- Built in GPS Repeater
- NMEA Compatible



ORDER CODE PLATINUM ENGINE - ZECHPLENG

ORDER CODE PLATINUM VIDEO INTERFACE KIT - ZECHPLVJK

ECHOPILOT SILVER2 & GOLD2 FLS

Forward Looking Sonar

Real time forward looking 200kHz sonar with enhanced processing software for improved performance. See underwater obstructions ahead of the vessel rather than just the depth below. The range is 20-150m ahead, 10-75m down. The FLS Gold adds a wider screen, NMEA in/out and a repeater option to the features of the Silver FLS.

KEY FEATURES

- Manual or Autogain
- History display of sea bed
- Optional log transducer
- Gold - Display GPS info via NMEA - position, BTW, DTW, XTE and waypoint name
- Gold - Output log and depth info via NMEA

SUPPLIED WITH

200kHz standard or professional transducer with 12m cable

ORDER CODE SILVER STANDARD - ZECH133.010

ORDER CODE SILVER PROFESSIONAL - ZECH133.011

ORDER CODE GOLD STANDARD - ZECH133.012

ORDER CODE GOLD PROFESSIONAL - ZECH133.013



ECHOPILOT WRECK FINDER

Underwater Wreck Locator

Based on the FLS Gold, the Wreck Finder can locate wrecks and other manmade objects on the sea bed. It can be used as a 2D FLS or a 3D Sidescan, with the wreck finding facility working in both modes. Interface with a GPS to store the position of the last 10 wrecks.

KEY FEATURES

- Forward range 150m, depth 75m
- Over 11,000sq metres of seabed can be displayed
- Realtime 3D image of seabed
- Optional switch box for second transducer

SUPPLIED WITH

200kHz professional transducer with 12m cable

ORDER CODE - ZECH133.018



NAVIONICS

Electronic Cartography

Navionics offers three main product lines: the popular and established Gold, the multi-award winning Platinum and - new for 2008 - Platinum Plus. All are based on Navionics exclusive vectorised fully Seamless technology, providing clearly legible charts without clutter, holes or discontinuities. Gold charts are now available in the new XL9-size giving huge coverage areas, while Platinum and Platinum Plus are available in the great value XL3-size. Both coverage sizes offer the same outstanding detail of the smaller sizes of the past, at up to 16 zoom levels. All recent plotters compatible with Navionics charts accept standard and expandable cartridge formats, such as Compact Flash or Secure Digital. Visit the Navionics website at www.navionics.com to access the list of compatible plotters with corresponding product line and media.

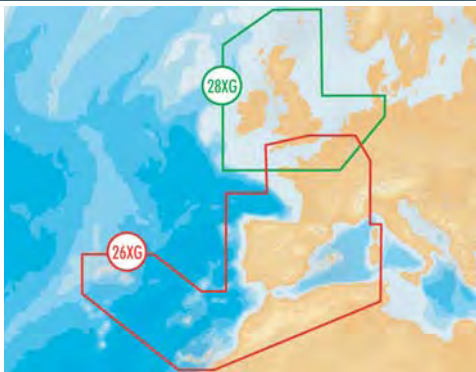
NAVIONICS XL9 GOLD

Electronic Cartography

Gold charts bring electronic cartography a step closer to the official paper charts. Bathymetries are easily distinguishable thanks to the different colour shadings, light sectors of lighthouses and real forms and colours of buoys. The boater can select the contour colours to differentiate and identify shallow and hazardous areas as well as difficult-to-anchor, deeper water.

KEY FEATURES

- Now in XL9 format - even greater chart coverage!
- Familiar appearance of a paper chart
- Highly detailed charts
- Intelligent Clarity with IC™
- Navids feature Xplain™ clear descriptions
- Extended object oriented technology
- Shaded depth contours and spot soundings
- Animated tide and current database shows tidal heights and speeds
- Port plans and port service guides
- New and updated T&Cs data
- Enjoy huge cruising areas
- A comprehensive database of wrecks for fishermen
- Exclusive coverage of the Shannon Waterway on 28XG



Area

GREENLAND & ICELAND
FINNISH & RUSSIAN LAKES
NORWAY SOUTH - SWEDEN WEST
MEDITERRANEAN & BLACK SEA
BALTIC SEA TO GULF OF BOTHNIA
SWEDEN SOUTH TO GERMANY
FRANCE & IBERIA
EUROPEAN INLAND WATERS
UK & IRELAND
NORWAY NORTH

Ref.

20XG
21XG
22XG
23XG
24XG
25XG
26XG
27XG
28XG
29XG

NAVIONICS PLATINUM

Electronic Cartography

Navionics Platinum is the first "Multi-dimensional" electronic chart system for marine chartplotters. In recent years, PC-based applications have enabled users to show charts and other ancillary information using various CDs. However the limitations of using a PC on a boat - in particular if you want the information available on the flybridge or in the cockpit, are well known.

Now, Navionics Platinum offers charts with enhanced features such as 3-D bathymetrics, cruising guides, satellite and photographic images and more - all integrated and geo-referenced on a single plug & play cartridge that could not be simpler to use.

Platinum really makes a difference to navigation awareness and enjoyment.



KEY FEATURES

- **3-D View** : view depths and elevations in 3 dimensions with optional photo overlay
- **Satellite photo overlay over land** : allows comparison with chart information improving situation awareness
- **Panoramic pictures** : improve your approach with 15,000 photographs of harbours and marinas
- **Port services & Points of interest** : detailed information - including phone numbers - for port services and points of interest
- **Dynamic Tide & Currents** : Tidal heights, flow speed and direction with graphic indicators
- **Pilot Books** : comprehensive and detailed pilot book information

ORDER CODES - SEE CHART ON NEXT PAGE



3D view with satellite picture overlay



Panoramic pictures



Satellite photo overlay - now in colour

NAVIONICS NAVPLANNER

PC-Based Chart Viewing System

An easy-to-use software package allowing users to plan their navigation on a PC at home.



KEY FEATURES

- View the chart on your PC
- Load, create and edit routes, saving them to your chart card
- Transfer data directly from the card to the plotter
- 16 zoom levels, measures distance and bearing, go-to-port function, and many other features

SUPPLIED WITH

Includes a USB chart reader and worldwide basemap chart at 32nm zoom level

NAVIONICS PLATINUM PLUS

Electronic Cartography

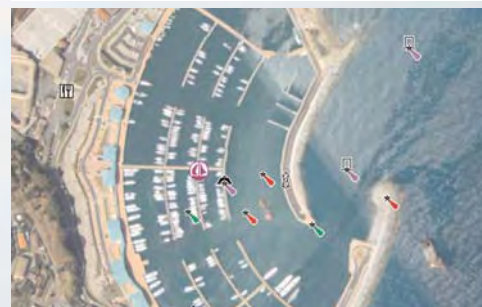
A major enhancement to the award winning Platinum cartography, Platinum Plus combines extremely high-resolution satellite and aerial photography overlays, stunning XGA panoramic pictures, improved 3D bathymetric depth elevations, and complete pilot books with Navionics' renowned accuracy and detail.

KEY FEATURES

- High-definition, geo-referenced satellite and high aerial photo overlays images at up to 25cm per pixel
- Sharp panoramic pictures of marinas, ports, passes and other locations in XGA (1024x768) resolution
- High definition depth elevations & seabed rendering



Improved 3D bathymetric views



High definition satellite & high aerial photography

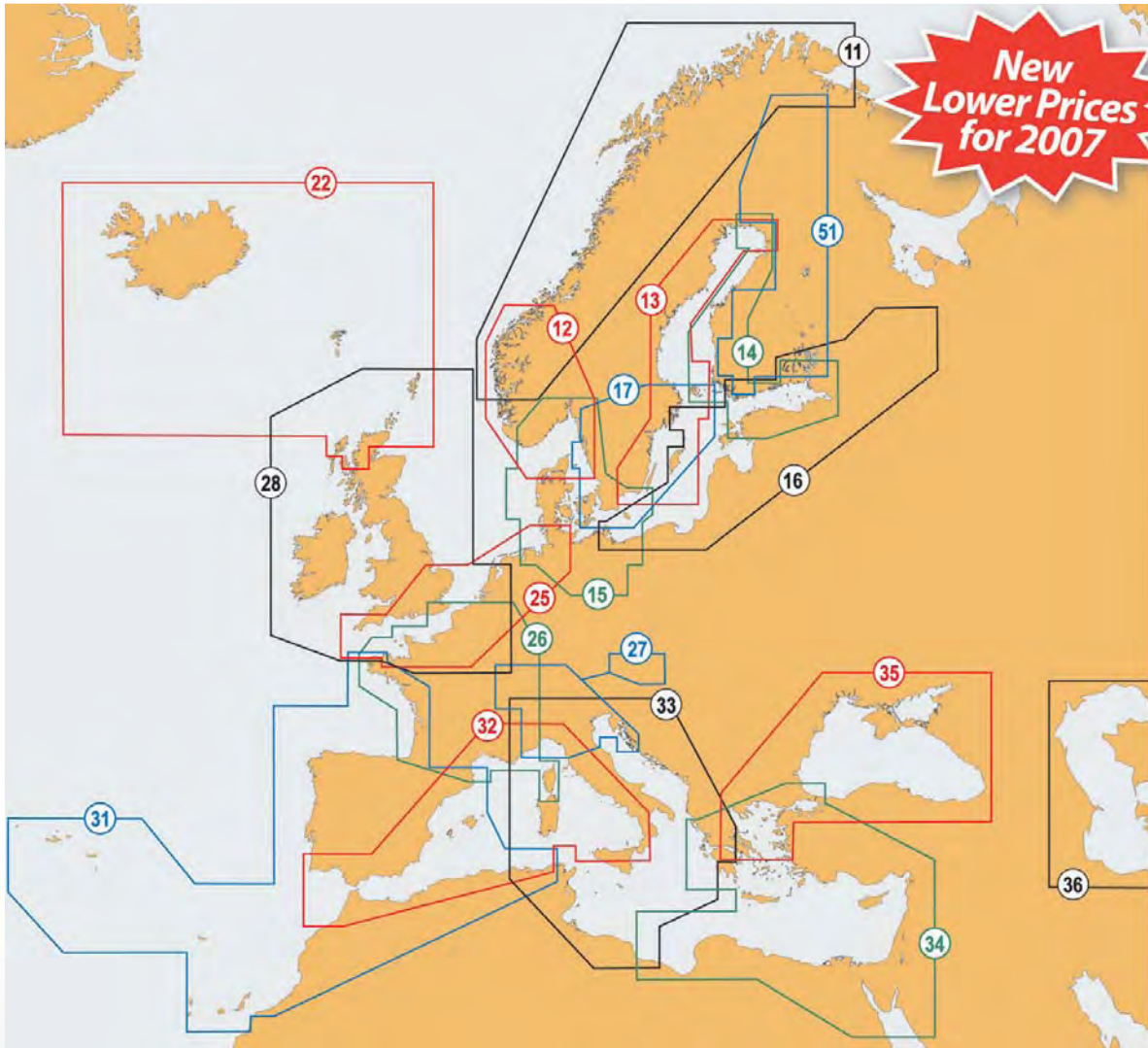
We accept most major credit and debit cards



Electronic Cartography

NAVIONICS XL3 PLATINUM & PLATINUM PLUS

Europe



Platinum

Plus
Code

Platinum
Code

Description

Ref	Plus Code	Platinum Code	Description
NORWAY NW	11PP	11P	NORWAY N & W. VARANGERFJORDEN TO TRONDHEIM
NORWAY SW	12PP	12P	NORWAY S & W. STRANDAFJORDEN TO GOETEBORG TO N. DENMARK
SWEDEN E. COAST	13PP	13P	SWEDEN E. COAST AARHUS TO MARTINNIEMI.
FINLAND	14PP	14P	FINLAND FROM KARLSBORG TO MUHU
OSLO TO DENMARK	15PP	15P	DENMARK, GERMANY, SKAGERRAK, SWEDEN W. DELFZIJL TO SKAGEN TO KOLOBRZEG, FLEKKEFJORD TO OELAND S
S. BALTIC	16PP	16P	POLAND, RUSSIA, LITHUANIA, LATVIA, ESTONIA, G. OF FINLAND. RUGEN TO HELSINKI
SWEDEN S	17PP	17P	SWEDISH LAKES, S. SWEDEN GOETEBORG TO YSTED TO OREGRUND
ICELAND	22PP	22P	ICELAND, FAROES, SHETLANDS, ORKNEYS, HEBRIDES & NW. SCOTLAND FROM KYLE RHEA TO HELMSDALE
UK S. - HAMBURG	25PP	25P	S. UK, BELGIUM, NETHERLANDS, S. FRANCE, NW. GERMANY. RIVER CAMEL TO THE WASH & PORTSALL TO FOEHR
FRANCE	26PP	26P	ENTIRE FRANCE. NIEUWPOORT TO BREST TO SAN SEBASTIAN & GOLFO DE ROSES
MID EUROPEAN WATERS	27PP	-	BODENSEA LAKE. ENTIRE RIVER PO. LAC LEMAN, LAC DE NEUCHATEL, LAC DE BIENNE, LAC DE MORTAT, THUNER SEE, BRIENZER SEE, ZURICHSEE IN SWISS LAKES. PASSAU, LINZ, WIEN & BRATISLAVA IN DANUBE RIVER & NEUSIEDLER SEE. LAGO MAGGIORE, LAGO DI LUGANO, LAGO DI COMO
UK & IRELAND	28PP	28P	UK, IRELAND NOW INCLUDING SHANNON WATERWAY , HEBRIDES, ORKNEYS, SHETLANDS, ISLE OF MAN, CHANNEL ISLANDS, NETHERLANDS IJSSELMEER & AMSTERDAM TO FRANCE GOLFE DE SAINT-MALO
IBERIA	31PP	31P	BISCAY, SPAIN, PORTUGAL, ALGERIA, MOROCCO, STR. OF GIBRALTAR, BALEARICS, CANARIES, MADEIRA, AZORES
MEDITERRANEAN W	32PP	32P	ALGERIA, MOROCCO, S. SPAIN, MED. FRANCE, ITALY W. STR OF GIBRALTAR, BALEARICS, CORSICA, SARDINIA, S. SICILY.
C. MEDITERRANEAN	33PP	33P	ITALY, ADRIATIC & IONIAN, TUNISIA. DJIDJELLI TO MISRATAH. CORSICA, SARDINIA, SICILY, MALTA, ITALIAN LAKES, LIGURIAN & TYRRHENIAN SEAS
MEDITERRANEAN E	34PP	34P	GREECE, TURKEY, SYRIA, ISRAEL, LIBYA, N. EGYPT. CYPRUS, CRETE, SEA OF MARMARA, AEGEAN SEA, SEA OF CRETE, PELOPONNISOS, N. RED SEA.
BLACK SEA	35PP	35P	BLACK SEA, AEGEAN SEA. INC SEA OF AZOV, SEA OF MARMARA.
CASPIAN SEA	36PP	36P	CASPIAN SEA

**AVAILABLE FOR
OVERNIGHT
DESPATCH**

Turn to the back page for pricing and ordering info NOW!

A closer look...

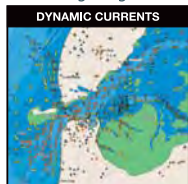
C-Map MAX TECHNOLOGY Key Features



EXCLUSIVE
A function to have automatic control over dangerous obstacles during navigation.



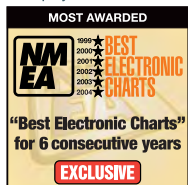
Great world archive of high definition pictures of ports, piers, bridge diagrams, lighthouses ...



Increase the knowledge of your navigation area with the dynamic display of the currents.



The lighthouses and other lights in your area of navigation light up with their real intervals and colours.



Winner of the NMEA Award for Best Electronic Charts for 6 consecutive years

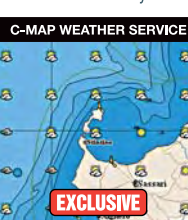


Quality guaranteed by a certified production process for C-Map by Jeppesen charts

C-WEATHER

European Weather Forecast Service

C-Weather offers a 5-day free of charge forecast to help navigators with their passage planning and weather routing, regattas, cruises, and more - we have your whole European route covered!



- Humidity
- Cloud cover
- Temperature
- Visibility
- Wave height
- Wind direction & speed



C-Weather service coverage area

PC-PLANNER

Rewind your adventure...
Plan the next one



- Plan
- View
- Archive
- Work

Whatever marine activity you are involved in, the PC-Planner makes it easier.

Main functions:

- Load and view your C-Map vector charts on PC
- List, create, edit routes and marks
- Measure distances and bearing (A-B)
- Manage waypoint databases
- Display and store previous tracks
- Route Checking for safe planning
- Search functions (port, port services, tides, wrecks)
- C-Weather (download and browse)
- Tide & Currents prediction
- Save and transfer waypoint (from PC to chart plotter and back)

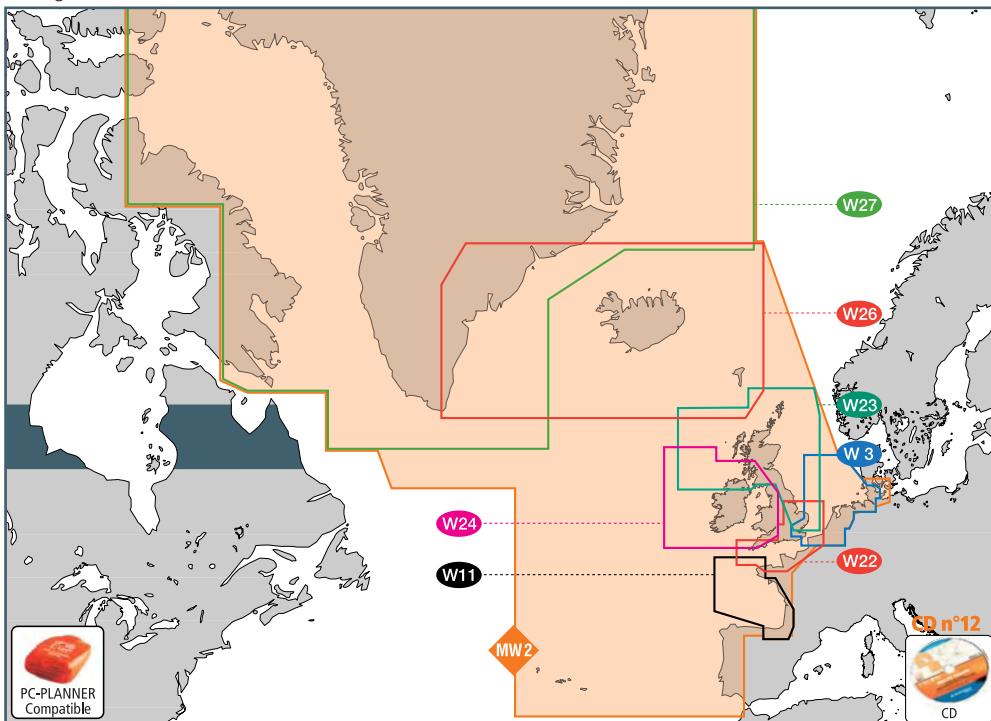
C-MAP EUROPEAN MAX WIDES & MEGAWIDES

Electronic Charts

Coverage now up to 10 times bigger - fully featured, same price! Available in C-Map MAX format only.

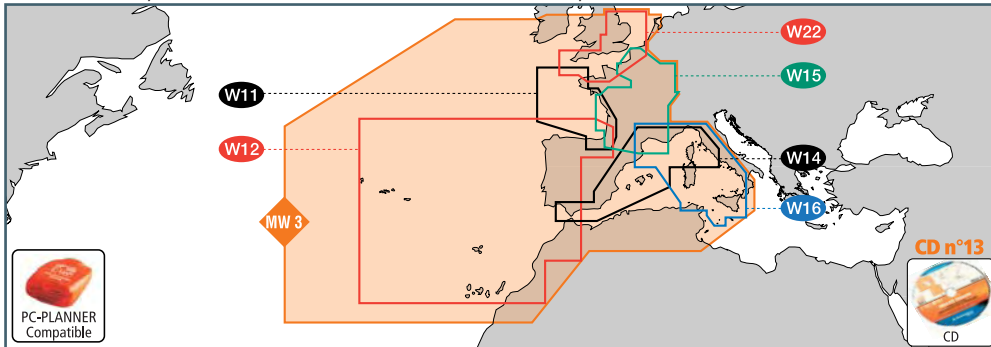
MW2 Atlantic European Coasts

Greenland, Iceland, UK and Ireland, Faeroe & Shetland Is, Belgium, Holland, Germany, France & Spain Atlantic, Portugal, Azores.



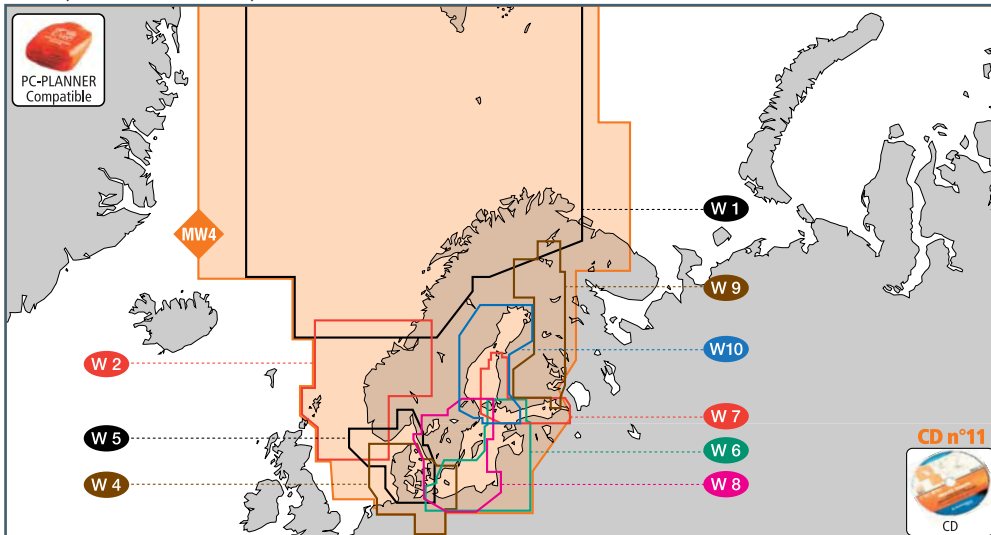
MW3 West European Coasts

Southern Ireland, Wales, Southern England, France Coastal and Inland, Iberian Peninsula, Morocco, Algeria, Tunisia, Malta, Tyrrhenian Sea, Azores, Balearic, Madeira & Canary Islands.



MW4 North & Baltic Seas

Norway, Denmark, Germany, Poland, Lithuania, Latvia, Estonia, Baltic Russia, Sweden, Finland & Finnish Lakes.

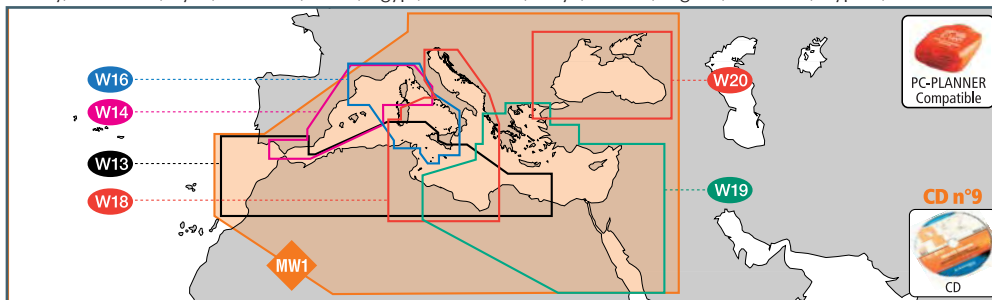


Electronic Cartography

C-MAP EUROPEAN MAX WIDES & MEGAWIDES

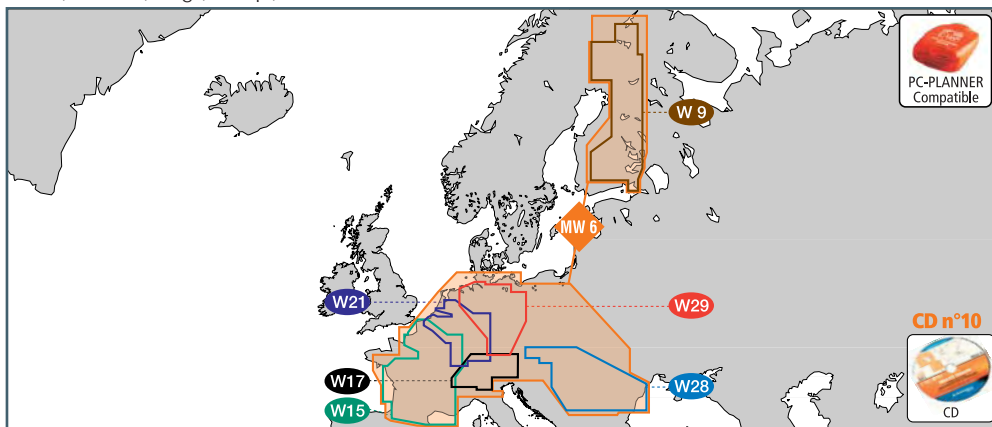
MW1 Mediterranean & Black Sea

Gibraltar, Med Spain and Balearic Islands, Med France, Italy, Slovenia, Croatia, Montenegro, Albania, Greece, Turkey, Black Sea, Syria, Lebanon, Israel, Egypt, N Red Sea, Libya, Tunisia, Algeria, Morocco, Cyprus, Malta.



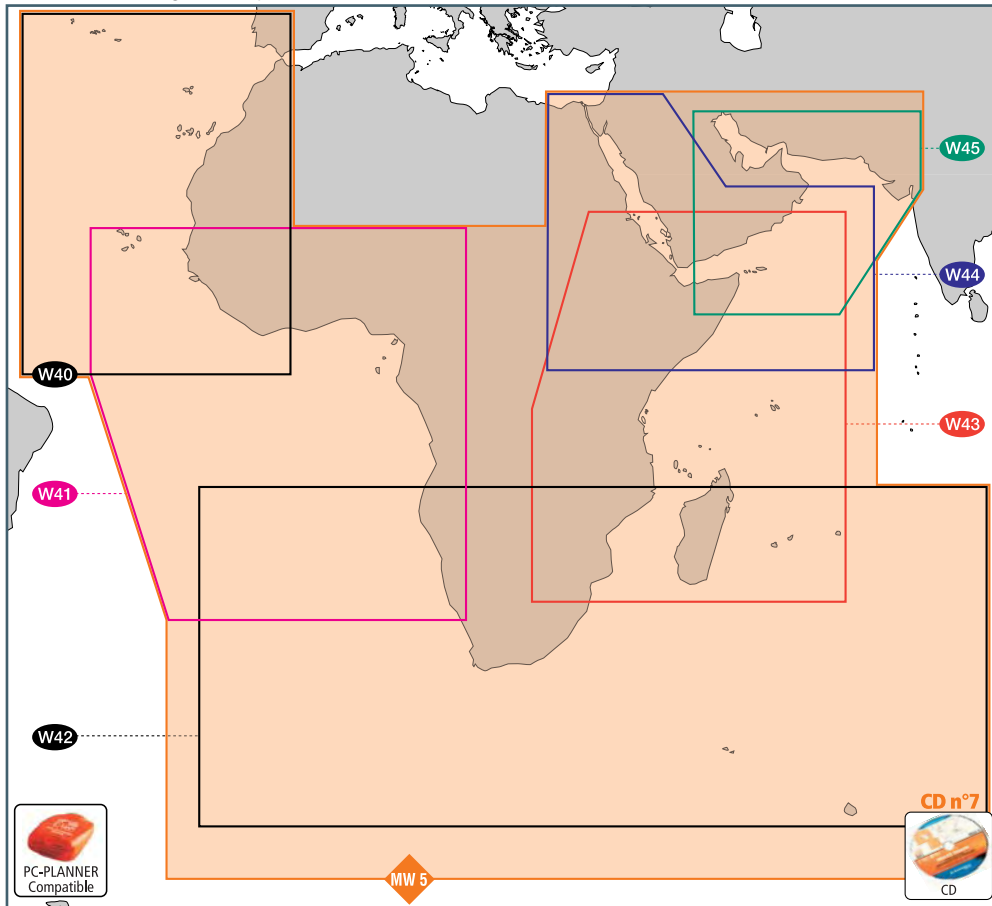
MW6 Europe Inland Waters

Rhein, Rhone, Po, Italian Lakes, Swiss Lakes, Austrian Lakes, Balaton, French Inland, Dutch Inland, Belgium Inland, Danube, Volga, Dniepr, Finnish Lakes.



MW5 Red Sea, Arab Gulf & Africa

Gibraltar, Atlantic Morocco, Madeira, Canary Is, Mauritania, Senegal, Gambia, Guinea Bissau, Sierra Leone, Liberia, Ivory Coast, Ghana, Togo, Benin, Nigeria, Cameroon, Equatorial Guinea, Rio Muni, Gabon, Congo, Dem Republic of Congo, Angola, Namibia, South Africa, Mozambique, Tanzania, Kenya, Ethiopia, Somalia, Red Sea, Oman, Cape Verde, Madagascar, Seychelles, Comoros, Mauritius, Reunion, Sao Tome, Ascension, St Helena, Arab Gulf.



Tech info

MW1 EM-M017 MEDITERRANEAN AND BLACK SEA

- W13 AF-M201 AGADIR TO MATRUH
Africa Mediterranean North
- W14 EM-M109 AYAMONTE TO OSTIA
Spain & France Mediterranean
- W16 EM-M974 MATARO TO LAMPEDUSA
Thyrrhenian sea
- W18 EM-M975 ANABA TO KATAKOLO
Adriatic & Ionian sea, Tunisia, Libya
- W19 EM-M110 ABU KAMMASH TO CANAKKALE
Aegean sea & Middle East coasts
- W20 EM-M102 BLACK SEA AND MARMARA

MW2 EW-M009 ATLANTIC EUROPEAN COASTS

- W3 EN-M083 FOLKESTONE TO ESBJERG
Belgium & Netherlands to Esbjerg
- W11 EW-M203 SANTONA TO PERROS GUIREC
France Atlantic coasts
- W22 EW-M210 ROSCOFF TO WITHERNSEA
English Channel
- W23 EW-M211 UK: COLCHESTER TO STRANRAER & ISLANDS
UK: East Coast & Islands
- W24 EW-M212 UK: NEWQUAY TO SALEN AND IRELAND
UK: West coast & Ireland
- W26 EN-M402 ICELAND AND FAEROE ISLANDS
- W27 EN-M154 GREENLAND COASTS

MW3 EW-M010 WEST EUROPEAN COASTS

- W11 EW-M203 SANTONA TO PERROS GUIREC
France Atlantic coasts
- W12 EW-M204 IBERIAN PENINSULA ATL. & ISLANDS
- W14 EM-M109 AYAMONTE TO OSTIA
Spain & France Mediterranean
- W15 EW-M225 FRANCE INLAND
- W16 EM-M974 MATARO TO LAMPEDUSA
Thyrrhenian sea
- W22 EW-M210 ROSCOFF TO WITHERNSEA
English Channel

MW4 EN-M019 NORTH AND BALTIC SEAS

- W1 EN-M572 NORWAY: BRAATTEN TO FINNBUKTA, SVALBARD
North-West Norway & Svalbard
- W2 EN-M573 NORWAY: HOELLEN TO SOERVIKA
Central Norway to Mandal
- W4 EN-M164 BORKUM TO SANDHAMN
North Germany & Denmark
- W5 EN-M165 STRALSUND TO SANDEN
Denmark, Western Sweden and Skagerrak
- W6 EN-M707 NOTHAFFEN TO KATKURU
Estonia, Latvia, Lithuania, Poland
- W7 EN-M331 PALDISKI TO NORMINNE
Gulf of Finland & Aaland passages
- W8 EN-M275 GAEVLE TO ROSTOCK
South Eastern Sweden to Gaevle
- W9 EN-M326 FINLAND LAKES
- W10 EN-M276 INGAA HAMN TO KAPPELSKAER

MW5 AF-M004 RED SEA, ARAB GULF AND AFRICA

- W40 AF-M202 W-AFRICA AZORES, CANARY, CAPE VERDE
- W41 AF-M203 WESTERN AFRICA: CENTRAL
- W42 AF-M204 SOUTHERN AFRICA
- W43 AF-M205 EASTERN AFRICA
- W44 ME-M202 RED SEA TO ARABIAN SEA
- W45 ME-M203 THE GULF TO GULF OF ADEN

MW6 EN-M018 EUROPEAN INLAND WATERS

- W9 EN-M326 FINLAND LAKES
- W15 EW-M225 FRANCE INLAND
- W17 EN-M068 CENTRAL EUROPEAN LAKES
- W21 EN-M076 BELGIUM INLAND & RIVER RHEIN
- W28 EN-M082 RIVER DANUBE
- W29 EN-M080 GERMANY INLAND

UPDATING IS IMPORTANT Sail in Safety

Update your cartridge for access to the most accurate data available.

Utilise all of the new available contents

Update your cartridge and take advantage of the new cartography contents - now up to 10 times more data than the previous version.



MAX Media Available
Easy Plug & Play

GRUNDIG GU15WDVDT & GU19WDVDT 3-in-1 15 & 19in LCD TV/DVD Player & PC Monitor

**HOT
PRODUCT!!**



These compact Grundig 15in and 19in LCD TVs are ideal for use on board boats of any size - not only are they fully featured HD-ready televisions with integrated DVD player and digital tuner, they also double as a PC monitor, so it's perfect for smaller boats where space is at a premium. Watch TV and movies, play games, display PC navigation and weather software or use as a repeater for your combi display if it has a video output!

KEY FEATURES

- Entertainment and navigation display in one compact package
- Inbuilt DVD Player
- Inbuilt stereo loudspeakers
- Electronic Program Guide (EPG)
- Screen Format 16:9, 1440x900 pixel resolution
- HD ready - superb image quality
- DVB-T

ALSO AVAILABLE

- Boat mount kit which comprises a wall mount bracket and 12v power cable.

ORDER CODE GU15WDVDT - ZGRUGU15WDVDT

ORDER CODE GU19WDVDT - ZGRUGU19WDVDT

ORDER CODE BOAT MOUNT KIT - ZGRUBFK

- Contrast Ratio (X:1): 400
- HDMI Interface
- 1 Scart input
- PC connection
- Wall mountable (requires boat mount kit, sold separately)



Boat mount kit

LINN CLASSIK MOVIE DVD Player



If you demand audiophile-quality sound and picture, the Linn Classik Movie is the solution. An innovative, high-performance total entertainment solution for music and movies. Enjoy the benefits of home cinema onboard! Listen to your favourite music, watch the latest movie or catch up with the radio news - the Classik Movie offers unrivalled functionality from a compact, easy to operate, simple to install system.

KEY FEATURES

- Complete home cinema system
- CD player
- AM/FM tuner
- Multiroom distribution
- Multi-channel DVD
- Dolby-Digital/DTS
- 5.1 channel amplification

ORDER CODE - ZLINMOVIE06SB

LINN CLASSIK MUSIK CD Player



An integrated CD player, AM/FM tuner and amplifier, the Classik Musik system delivers leading audio performance in an easy-to-use, all-in-one package.

KEY FEATURES

- 75 watt, 4 ohm amplifier
- Two sets of speaker connections per channel
- Multi room system compatible

ORDER CODE - ZLINMOVIE06SB

SONOS CS100

Digital Music System

Get instant access to your whole digital music collection, internet radio and select music services from almost anywhere with this stylish and innovative multi zone digital music storage system ideal for even large installations. Multi-stream playback - play different songs simultaneously in up to 32 different zones. Multi-zone synchronous playback - play the same song simultaneously in up to 32 different zones without echoes or delays. Large, full-colour LCD screen and iPod-style scroll wheel for easy, intuitive operation. Supports up to 32 Controllers and ZonePlayers per system.

KEY FEATURES

- Integrated multiroom control
- Avoids sources of wireless interference
- Plug in ZonePlayers to add rooms to the system
- No ripping, downloading or PC required
- Multiple browsing options
- Queue-based music playback
- Separate queues for each zone

SUPPLIED WITH

Package includes two Zone Players, one Controller, two speaker sets. Components also sold separately.



- Flexible playback options
- Backlit buttons and screen
- Full-screen and thumbnail views of album art
- Movement sensor automatically turns controllers on when you pick it up
- Light sensor turns backlighting on only when necessary to conserve battery power

ORDER CODE BUNDLE PACKAGE - ZSONCS100UK

ORDER CODE CR100 CONTROLLER - ZSONCR100UK

ORDER CODE ZP100 ZONEPLAYER - ZSONZP100UK

BOSE 131

Marine Loudspeakers

Marine speakers that deliver high-fidelity sound. Each speaker has a tuned, ported enclosure and features a proprietary full-range driver, which provide greater power and clarity with full, deep bass and clear, crisp high frequencies.

These speakers are put through a rigorous evaluation by re-creating extreme environmental conditions, including temperatures ranging from 158°F to -13°F.



KEY FEATURES

- Engineered to withstand snow, sun, rain, ice and saltwater
- Designed to fit pre-cut speaker holes on most boats
- Survived 66% longer than the Marine Industry Standard in tests simulating years of exposure
- Three-year limited warranty

ORDER CODE - ZBOS131

We accept most major credit and debit cards

Handheld GPS, AIS, Navtex, Inverters & VHF Radios

MOERER WIB2 & WIB2B

PC Navtex Receiver

Innovative module that offers simultaneous reception of Navtex messages on 490kHz and 518kHz. A separate antenna is not required as the unit contains a internal antenna. No software installation is necessary, simply plug into a spare USB port to display the Navtex messages on your PC or laptop. The Navtex messages are stored in HTML format and can be viewed using your web browser. Compatible with Windows ME, 2000, XP, Mac OS and Linux systems.



KEY FEATURES

- Simultaneous reception on both frequencies
- WIB2B includes inbuilt barograph
- Compact - only 90x57x23 mm
- Internal battery will power the unit for approx 3 days continuous operation without PC
- The battery is recharged via the PC
- Non volatile data memory for 762,000 characters
- Optional 12/24V or 230V charger

ORDER CODE WIB2 - ZMORWIB2
ORDER CODE WIB2B - ZMORWIB2B

MOERER WIBE

PC Navtex/Weatherfax Decoder

Self contained black box Navtex and Weatherfax receiver with USB PC connection that enables you to display Navtex messages and synoptic weather charts on your PC or laptop.



KEY FEATURES

- Europe-wide weather information from Northwood and DWD
- Receives HF Fax, NAVTEX (490 & 518kHz), SYNOP and sea weather forecasts
- Built in electronic barograph
- No software to install - works through your web browser
- Memory card slot to store images for viewing on PDAs or monitor
- Low power consumption
- Requires connection to external active antenna (optional) or insulated backstay

ORDER CODE - ZMORWIBE

MOERER WIB2BX

PC Navtex Receiver

Black box Navtex receiver with PC connection that comes complete with either a balun antenna adaptor (allowing a long wire or insulated stay to act as the antenna) or a dedicated compact active antenna. Sail boat owners will appreciate the ability to use a stay as an antenna without more masthead antenna clutter.

KEY FEATURES

- Hook up a PC via a standard USB interface
- True dual channel receiver technology - simultaneous reception of both frequencies
- Inbuilt highly accurate (to 0.1hPa) barograph with 7 day log



ORDER CODE C/W ANTENNA - ZMORWIB2BX-A
ORDER CODE C/W ADAPTOR - ZMORWIB2BX-B

EASY AIS

PC AIS Receiver

2 channel black box AIS receiver module for use with a PC, laptop, AIS enabled chartplotter or radar.

KEY FEATURES

- Very low power consumption
- NMEA compatible, GPS data input and output
- A quality product representing value for money
- Compact in size and housed in a robust metal case
- Compatible with most AIS-enabled chartplotters, radars, combi displays and PC based systems
- VHF antenna required



ORDER CODES - ZECHAI5

MAGELLAN TRITON 1500 & 2000

Colour Handheld Touchscreen GPS Chartplotter

These innovative handheld chartplotters from Magellan feature a 2.7in colour touch-screen that makes it easy to use all the advanced features. Simply touch the screen to easily interact directly with maps and menus, view the elevation profile for the trail ahead (or any route) or even the track that you just travelled. An embedded speaker and microphone allow audio notes to be recorded, another way to remember geographic locations and waypoints. Upload digital music to the available memory or your own SD card. SD-card compatibility also makes it easy to expand your navigation by adding detailed maps and applications. Upload optional detailed topographic maps, marine cartography and other applications.

The Triton 2000 has all the features of the Triton 1500, plus a 2 mega-pixel camera, a 3-Axis electronic compass and a barometer.

KEY FEATURES

- 2.7in colour touch screen
- 128MB memory for additional map storage
- Built-in microphone and speaker
- Record audio notes on route
- Built-in LED flashlight
- MP3 Player via speaker or headphone jack
- Picture Viewer
- Unlimited memory via SD cards
- Compatible with MapSend® software

SUPPLIED WITH

USB PC interface cable

ORDER CODES - CALL FOR DETAILS



MASTERVOLT MASS

Sine Wave Inverters

A superb range of high efficiency switchmode sine wave inverters that enable domestic mains products to be used onboard your boat.

KEY FEATURES

- 12, 24 & 48v inputs
- 110 & 240v outputs
- 'Low energy' mode
- Stable 50Hz or 60Hz AC output
- Remote control panel option
- Fully safeguarded against short circuiting, overloading and high operating temperatures
- Automatic switchover to standby mode
- Can be installed on any vessel with a separate service and starter batteries

ORDER CODES - CALL FOR DETAILS



MASTERVOLT IVO SMART

Battery Chargers

The IVO Smart series has been developed for the smaller sized service batteries and can be fixed or mobile. Available as high frequency or switch mode chargers with an extremely accurate charge characteristic that ensures your batteries are always fully charged and increases their lifespan.

KEY FEATURES

- Clean DC output
- Three-stage charge sequence
- Fully automatic recharging up to 100%
- Automatic temperature compensation
- Simultaneous recharging and supplying
- Auto-ranging circuit allows the charger to be connected to any voltage from 90-265v, 50/60Hz
- Optional remote control panel

ORDER CODES - CALL FOR DETAILS



C-MAP MAX PRO

Electronic Cartography

The latest evolution in charting technology is an advanced electronic charting standard that now works with Nobeltec Admiral MAX Pro™ and VNS MAX Pro™ software. Nobeltec Navigation Software & MAX Pro Charts – The Best of Both Worlds™! MAX Pro is ideal for anyone who takes their navigation seriously and wants the best tools for the job. Equally suitable for leisure, fishing or light commercial vessels, MAX Pro bridges the gap between the cartridge based cartography found on smaller dedicated chart plotters and the S57ENC data found on larger commercial ships.



NOBELTEC VNS MAX PRO

Visual Navigation Suite Software



Powerful yet simple navigation - VNS MAX Pro works with C-Map MAX Pro™ charts and has support for Microsoft® Vista™, real-time vessel positioning, quilting for seamless chart integration, distance and bearing to active mark/route/target, unlimited route and waypoint placement, GPS upload/download, twilight and night display, integrated ETA calculator, auto-pilot support and much more! The system also serves as the launch platform for sounder and radar integration and feature-specific plus pack add-ons.



KEY FEATURES

- Powerful 3D Navigator and shaded relief feature brings hidden information to life right on your screen
- Fully customisable NavInfo panel for immediate display and histogram representation of key navigation data
- Hand panning tool
- GRIB weather overlay
- Handy "undo" feature
- GPS signal strength
- Trip odometer display



NEW FOR
2008

**MAX
PRO**

ORDER CODE - CALL FOR DETAILS

NOBELTEC ADMIRAL MAX PRO

Navigation Software



Admiral builds on the success of the award winning Visual Navigation Suite by adding even more advanced features. Like VNS it supports C-Map MAX Pro™ charts and works with Microsoft® Vista™, but adds advanced multi-monitor support, GlassBridge™ Network, AIS filtering, vessel scaling and the easy-to-use NavView touch-screen, with a big-button user interface. If you're looking for the ultimate PC navigation system, your yacht deserves nothing less than the most powerful solution available - Admiral MAX Pro.



KEY FEATURES

- Hand panning tool
- Radar target tracking (requires InSight Radar box)
- Dual radar support
- Display Admiral on up to seven monitors
- GlassBridge Network - create a complete navigation network using multiple computers sharing data, radar overlay, nav objects and charts
- Track line colouring
- Display up to four video camera feeds

NEW FOR
2008

**MAX
PRO**

ORDER CODE - CALL FOR DETAILS

NOBELTEC INSIGHT RADAR2

PC Radar System



Nobeltec's new range of radar products bring radar technology to your PC equipped with Admiral or VNS navigation software. Available in 20in 2kW and 25in 4kW radome style antennas as well as a range of open arrays from 4-25KW, PC radar technology is now available for all sizes of boat. 4KW and larger units connect via an ethernet interface and support a stunning 1024 x 1024 resolution and 8 colour resolution. The 2KW unit connects via USB for easy plug and play installation.

KEY FEATURES

- Full screen radar (PlanView), radar overlay and splitScreen mode
- Off-centering Radar mode
- Auto-ranging, Auto-gain, Auto-sea clutter
- Pulse Control
- MARPA facility with Admiral software
- Save and store radar images to your PCs hard drive

SUPPLIED WITH

Radar antenna, IR2 Black Box, VNS or Admiral navigation software, 10m radar cable, Ethernet crossover cable

ORDER CODES - CALL FOR DETAILS

NOBELTEC SAILING PLUS PACK

Performance Module

Requires Admiral or VNS v9 or higher
A comprehensive cruising and performance feature pack for sailors, regardless of your skill or experience level - whether part of a world-class racing crew or simply looking to improve your cruising skills.

KEY FEATURES

- Ockam, B&G or NMEA input
- Inbuilt Strip Chart analysis tools
- Polar file instantly updated as you sail
- Display polar targets and actual performance
- On-screen indicators - laylines, reverse laylines, over-the-chart wind indicators
- **NEW** Windvantage™ weather router advises of the most efficient sailing routes taking the vessel's performance characteristics into consideration



ORDER CODE - ZNOBSPPK

NOBELTEC WEATHER PLUS PACK

Weather Routing Module

Transforms simple weather data into informed navigation decision-making. Use the built-in GRIB viewer to display predictive and actual data right over the chart. See GRIB files instantly delivered and automatically opened in the chart window.

KEY FEATURES

- Supports multiple weather providers including Sirius™
- Integrated XM satellite weather overlay (XM Plus Pack)
- OCENS WeatherNet Service pre-installed in Admiral MAX Pro™
- Cursor rollover for precise values

ORDER CODE - CALL FOR DETAILS

We accept most major credit and debit cards



Satcoms & Sat TV

KVH TRACPHONE FB250/FB500

Voice and Broadband Internet Access

The perfect solution for boat owners who want the same Internet speeds they enjoy at home. The FleetBroadband system gives you "always on" broadband access to email, the internet and Virtual Private Networks (VPNs) as well as simultaneous, reliable telephone service at an affordable rate.

NEW FOR 2008

HOT PRODUCT!!



KEY FEATURES

- Fully automatic operation and dynamic stabilisation, even in the roughest seas
- Choice of dome sizes to match your Tracvision satellite TV system dome.
- No fixed monthly fees and affordable pay-as-you-go service
- Convenient shipwide integration with PABX systems
- FB250 up to 284Kbps standard, 128Kbps streaming
- FB500 up to 432Kbps standard, 256Kbps streaming

ORDER CODES - CALL FOR CUSTOM QUOTE

KVH TRACPHONE V7

Broadband Internet Access

If you're looking for the broadband internet and email access speeds of the TracPhone FB250 and FB500 but don't require standard voice telephone service, the data-only TracPhone V7 mini-VSAT system is the perfect solution, offering high-quality and consistent data connections, as well as crystal clear multiple Voice over IP (VoIP) telephone lines and reasonable service costs.



KEY FEATURES

- Seamless regional roaming with spread spectrum communications technology
- Ideal for heavy data use
- Rugged 24in antenna - 85% smaller, 75% lighter than standard VSAT antennas
- Onboard networking via an integrated WiFi and Ethernet hub
- Up to 512Kbps for ship-to-shore transmissions
- Up to 2Mbps for shore-to-ship downloads
- Dynamic, gyro-stabilised tracking and military-grade modem for outstanding performance
- Choice of always-on, fixed price or per-megabyte subscription plans and easy 1-call activation

NEW FOR 2008

ORDER CODES - CALL FOR CUSTOM QUOTE

KVH TRACVISION M3

Compact Satellite TV System

If you thought your boat was too small for satellite TV then think again! The M3 is the world's smallest, fully stabilised mobile satellite television antenna system. Ideal for boats as small as 25ft, KVH's revolutionary ultra-compact 40cm antenna gives crystal-clear reception and coverage comparable to the larger satellite TV antennas. Everything you need comes in one single box - antenna, receiver, RF remote, all ready to connect to your boat's 12V power supply and TV.

NEW FOR 2008



KEY FEATURES

- Advanced, super-efficient 14.5in antenna
- Great offshore coverage (100-200 miles)
- Fast, powerful, ultra-quiet motors
- Fully automatic satellite acquisition
- Supports multiple receiver/TV installations
- Single LNB - simple single cable installation
- Voltage 9-16V DC, power consumption 50W
- Weighs only 8.6kg
- Height 45cm, diameter 40cm

SUPPLIED WITH

Compact dome, Junction box, Antenna cable (15m). Requires a digibox or satellite decoder (eg Sky box)

ORDER CODE - ZKVH02-01-100-0

KVH TRACVISION M5, M7 & M9

Satellite TV Systems

Enjoy High-Definition (HDTV) programming from any leading European satellite and program provider with completely automatic satellite switching right from your remote control, just like at home! The Tracvision M5, M7 and M9 satellite TV systems are suitable for vessels from 40ft to 80ft and above, offering superb fully stabilised satellite television reception under even the most demanding sea conditions. KVH's exclusive RingFire™ antenna technology gives you 30% greater reception and more range than any other comparably sized system.

NEW FOR 2008



KEY FEATURES

- **Tracvision M5** - 45cm system ideal for 40-60ft boats, weight 13.6Kg, power consumption 50W
- **Tracvision M7** - 60cm system ideal for 60-80ft boats, weight 25Kg, power consumption 55W
- **Tracvision M9** - 82cm system with integral Gyro/GPS and Remote Service Modem ideal for 80ft+ boats, weight 38.5Kg, power consumption 120W
- Proprietary RingFire technology for outstanding offshore reception and signal gain
- Unsurpassed High-Performance DVB® tracking and superior offshore performance
- M5 & M7 - optional GyroTrac gyrocompass upgrade
- Versatile Master Control Panel for trouble-free set up, easy system monitoring, satellite configuring and easy switching between satellite TV services
- Supports automatic satellite switching from your remote control and multiple TVs and receivers

SUPPLIED WITH

Antenna dome, Tri-Sat Controller, Remote Service Modem (M7/M9 only). Requires a digibox or satellite decoder (eg Sky box)

ORDER CODES - CALL FOR CUSTOM QUOTE

Turn to the back page for pricing and ordering info NOW!



DigitalYacht

Marine PC Systems

DIGITALYACHT CF60

Compact 12v Solid State Marine PC

The first affordable solid state Windows PC for the marine market. The unique NAND Flash hard drive means there are no moving parts, and there's no fan as the unit is passively cooled through its patented heat-sink case. This greatly improves reliability even in the hostile marine environment. Small enough to fit on any boat, the CF60 still boasts a powerful Intel M processor, 512Mb RAM and a CDRW/DVD drive. The economics also make sense - this one product offers navigation, communication and entertainment functions at an incredibly attractive price.

KEY FEATURES

- Powerful Intel M 1.5 GHz processor, 16Gb Flash HD, CDRW/DVD
- 512Mb DDR 333MHz RAM expandable to 1Gb
- 12v DC direct operation with low power consumption (<1.5A)
- Measures just 185 x 60 x 255mm
- USB, IEEE1394, 10/100 MB LAN and audio in-out connections
- Built in Intel graphics for fast electronic charting presentation
- Matching range of LCD monitors and accessories
- 2 year warranty

SUPPLIED WITH

CPU only - monitor, keyboard and mouse must be ordered separately. Includes Windows XP operating system.



NEW FOR 2008

HOT PRODUCT!!

ORDER CODE - ZDIGCF60-1

DIGITALYACHT CF50

Ultra Compact 12v Marine PC

Compact PC ideal for onboard use, unlike many other compact PCs it uses a genuine Intel M processor for ultra-reliable and powerful computing and is designed to work with Windows operating systems. It is ideal for electronic charting, navigation and communication and its fast graphics processor means quick redraws of electronic charts.

KEY FEATURES

- Ultra compact - measures only 255 x 165 x 70mm
- Runs from the boat's 12v supply - no inverters or power supplies required
- USB, Firewire/IEEE1394a, RS232/NMEA serial, Ethernet and VGA monitor port
- Intel M processor, Windows compatible
- DVD/CD-RW drive

SUPPLIED WITH

CPU only - monitor, keyboard and mouse must be ordered separately. Includes Windows XP operating system



ORDER CODE - ZDIGCF50-1

DIGITALYACHT CF220

Marine PC

For the serious marine PC user, the CF220 is your onboard navigation hub - this single unit provides navigation, communication and weather at a very attractive price. It features dual monitor support using a high resolution graphics card, inbuilt wireless network access (ideal for Internet access in Wi-Fi equipped marinas) and is configured for onboard use with a total of 5 serial ports allowing multiple NMEA, AIS and instrument inputs.

KEY FEATURES

- Measures just 200x180x280mm
- Powerful Intel Dual Core processor
- CD-RW/DVD drive
- 1Gb RAM, 80Gb ultra-rugged hard drive

SUPPLIED WITH

CD-RW/DVD drive and CD creation software. Monitor, keyboard etc must be specified separately.



ORDER CODE - PLEASE CALL

DIGITALYACHT AIT250

Class B AIS Transponder

Although there are several AIS units currently being sold in the leisure market they are all just receivers - it is normally commercial vessels that are fitted with transmitters. Thus while you can see them, they can't see you! The AIT250 is a full Class B AIS transponder which sends and receives AIS data so your position, course, speed, heading and identity are transmitted to other AIS users as well as receiving other Class A and Class B data transmissions for viewing on a compatible plotter or PC charting system, greatly improving your safety at sea. This compact unit measures just 190x175x91mm and can be interfaced with a PC or a compatible chartplotter, radar or combi display.

KEY FEATURES

- Full Class B AIS transponder compliant to IEC62287-1 and CE0168
- Built in GPS with NMEA output
- Built in dual channel receiver with NMEA/RS232 output
- Silence mode switch - turn off the transponder
- 12V DC (9.6-15v), average power consumption 4W
- Built in integrity testing for constant monitoring with LED status lights
- Optional distress function with safety related message (SRM) capability

SUPPLIED WITH

GPS antenna, VHF antenna



NEW FOR 2008

EDITOR'S CHOICE

HOT PRODUCT!!

ORDER CODE - ZDIGAIT250

DIGITALYACHT AIRO

Waterproof Colour PDA

A powerful and rugged handheld PDA using Windows Mobile 6 operating system. Drop, dust and waterproof, it's built to MIL specifications for the most demanding situations. Features include quad band GSM phone (with internet and email connectivity), 12 channel GPS, high res touchscreen colour display and rocker-pad cursor control.

KEY FEATURES

- Shock resistant to 20g, drop resistant 1.25m onto concrete 26 times
- 2.8in high res 320x240 pixel touchscreen
- Intel XScale PXA270 processor 520 MHz
- 1570 mAh lithium rechargeable battery
- Dedicated programmable distress key
- mini SD slot for charting or memory expansion
- Built in Windows Mobile 6 applications such as Pocket Word, Excel, Outlook and Powerpoint



NEW FOR 2008

ORDER CODE - ZDIGAIRO

DIGITALYACHT WL200

On Board Wi-Fi Access System

Access the internet through wi-fi on board with a range of up to 1km from local hotspots! The WL200 boosts wi-fi range by up to 15 times thanks to a powerful 400mW output. With a simple USB connection, it's compatible with both notebooks and installed PCs.

KEY FEATURES

- Plug in external wi-fi adaptor for your on board PC or notebook
- Plug and play setup automatically detects wi-fi points within range
- Boosts range by up to 15x with powerful 400mW output
- Up to 1 mile range from marina wi-fi hot-spots
- USB connection for easy installation
- Fits on standard 1in x 14TPI mount
- Self powered from PC USB connection
- 802.11b compliant -data rate up to 11Mbps
- Just 482mm long

SUPPLIED WITH

Software, 5m USB cable. USB cable extenders available as an option



NEW FOR 2008

ORDER CODE - ZDIGWL200

We accept most major credit and debit cards



DIGITALYACHT IB70

Integrated Radar and Electronic Charting System

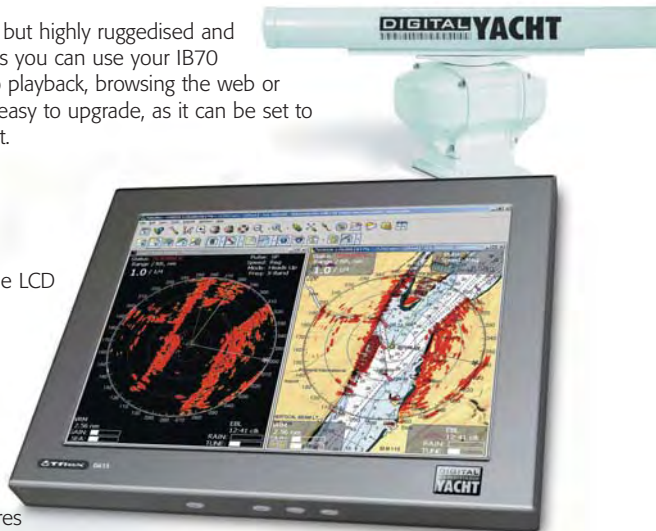
DigitalYacht's new IB70 series brings professional electronic charting from commercial "glass bridge" systems to the leisure marine market. Running an embedded version of Nobeltec's award winning VNS navigation software, the IB70 will boot straight into the VNS navigation screen - it even saves all your favourite settings every time you switch on.

IB70 systems comprise a CF50 black box processor, CU50 control keypad and TF615 sunlight viewable LCD display. There are three choices of radar antenna ranging from a compact 20in 2kw unit to a 4.5ft 4KW open array. Also included are a high performance AIS receiver and 4 port NMEA multiplexer, providing up to 3 channels of NMEA instrument or GPS data - connect to any compatible NMEA1083 instrument, GPS or autopilot.

IB systems are based around standard but highly ruggedised and embedded PC architecture. That means you can use your IB70 system for other applications like video playback, browsing the web or weather fax decoding. It also makes it easy to upgrade, as it can be set to update when connected to the internet.

KEY FEATURES

- Intel 1.5GHz processor 256Mb RAM
- 32Mb graphics processing
- 40Gb ultra rugged hard drive
- High resolution, 15in sunlight viewable LCD display, 1042 x 768 pixel resolution
- 4 x NMEA0183 input ports and NMEA0183 data out
- Optional NMEA2000 interface
- Optional high speed solid state rate gyro for north up and overlay display stabilisation
- Support for IP video camera source
- See Nobeltec page 38 for VNS features



DIGITALYACHT IB70 RADAR

Radar Antenna Options



Choose from 2 or 4kW radome or a 4kW open array with an amazing 1.8° horizontal resolution. All units feature a range discrimination of 25m or better, 3 pulse lengths for exceptional performance and are supplied with a 10m interconnect cable. The 2kW unit connects via a high speed RS422 interface and the 4kW units via a 10/100Mb ethernet connection.

SYSTEM SPECIFICATIONS

- **IB72** - 2kW 20in radome, 30rpm scan speed, 24NM range. 30W max power consumption. 4.7° horizontal / 25° vertical beamwidth
- **IB74** - 4kW 25in radome, 24rpm scan speed, 36NM range. 55W max power consumption. 3.9° horizontal / 25° vertical beamwidth
- **IB76** - 4kW 4.5ft open array, 24/48rpm scan speed, 48NM range. 70W max power consumption. 1.8° horizontal / 22° vertical beamwidth

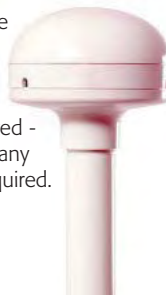
ORDER CODE IB72 SYSTEM - ZDIGIB72
ORDER CODE IB74 SYSTEM - ZDIGIB74
ORDER CODE IB76 SYSTEM - ZDIGIB76



DIGITALYACHT GPS105/110

GPS Sensor

A range of high performance active 12 channel WAAS/EGNOS GPS antennas. Ideal for use with the IB70 series - which allows up to three GPS receivers to be connected - these antennas can be used with any system where position input is required.



KEY FEATURES

- **GPS105** with NMEA output
- **GPS110** with USB connection
- Typical accuracy less than 5m

ORDER CODE GPS105 - ZDIGGPS105
ORDER CODE GPS110 - ZDIGGPS110

DIGITALYACHT PROLITE SERIES

LCD Monitor



Compact and lightweight colour LCD monitors that complements the DigitalYacht system. Available in 15in, 17in and 19in screen sizes.

KEY FEATURES

- Inbuilt stereo speakers
- Free standing or flush mountable
- Optional adjustable mounting arm

ORDER CODE PROLITE 115 - ZDIGS115
ORDER CODE PROLITE 117 - ZDIGS117
ORDER CODE PROLITE 119 - ZDIGS119

DIGITALYACHT IB30

Chartplotting System

With an easy to mount 15in 1024 x 768 pixel LCD display and separate chart controller, the IB30 offers large screen chart plotting at an affordable price



KEY FEATURES

- C-Map MAX charting for unprecedented detail
- Easy menu operation
- Course up or north up display modes
- Tidal currents display
- 3D perspective view
- Aerial photo capability
- 12v DC operation

ORDER CODE - ZDIGIB30

CLEARPOINT WEATHER

Global Weather Information Service



Onboard accurate weather information and forecasting is a vital ingredient for safe navigation and passage planning. ClearPoint is a global weather service that aggregates data from weather buoys, Navtex and GMDSS safety at sea messages as well as aviation sources such as airports and volmet transmissions. While some weather monitoring systems are overly complex and difficult to use, ClearPoint simplifies weather data using simple weather icons that display clearly and easily on multiple devices.

KEY FEATURES

- 5 day forecast
- Weather patterns, fronts, visibility, clouds, wave height and wind speed and direction
- Wind, pressure, swell, sea and air temperature data overlaid onto a background world map
- Lightning prediction overlays
- IR thermal radar and satellite imagery
- Ice reports, ocean currents, cloud cover & visibility, altimetry and bathymetry, rainfall data and more
- Choice of daily, monthly, or annual subscriptions

MINIMUM SYSTEM REQUIREMENTS

- Windows 2000, XP, or Vista
- Internet connection
- Pentium 4 - 1.5GHz processor
- 512Mb RAM
- Screen resolution of 1024x768 pixels

ORDER CODE - ZCLEHDWS



STANDARD HORIZON GX1500E

Fixed DSC VHF Radio

Boat Owner

Compact VHF for small craft such as RIBS and sports boats, yet still ideal for larger boats. It has one of the largest displays in a radio of this size, with a big rotary channel selector knob. Add optional CMP25B or VH-310 remote mic to become a complete dual station radio with the option to communicate and send a DSC distress call from two separate onboard locations.

KEY FEATURES

- Priority scan and dual watch
- Customisable channel naming
- Versatile user-programmable scanning
- Position, date and time displayed when interfaced with a GPS or chart plotter
- Privately poll and display another vessel's position
- Waterproof front panel (IPX7)

ALSO CONSIDER

- Icom M421, Raymarine Ray54E, Navman 7100

ORDER CODE - ZSTAGX1500E

STANDARD HORIZON GX3000E

Fixed DSC VHF Radio

Class D DSC transceiver with a large display and a rotary channel selector. A powerful 30W loud hailer is integrated offering listen back, fog signalling and other features and the 2.25in audio speaker delivers a 4.5 Watt output, even in the poorest conditions.

KEY FEATURES

- All the features of the GX1500E
- Compatible with up to two CMP25B or the new VH-310 remote microphones - turn the GX3000E into a full function dual-station radio
- Position, date and time displayed when interfaced with a GPS or chart plotter
- Privately poll and display another vessel's position
- Waterproof front panel (IPX7)

ORDER CODE - ZSTAGX3000E

STANDARD HORIZON VH310

Second Station Telephone Handset

Submersible telephone handset capable of remotely controlling all radio and DSC functions of the fixed VHF, including remote control PA and fog signalling. Additional features include intercom from the VH-310 to the connected radio and other remote microphones.

KEY FEATURES

- Compatible with VM3500E, GX1500E & GX3000E
- Complete control of radio functions
- Intercom facility between radio and other remote stations
- CT-100 7m extension cable available

SUPPLIED WITH

Wall mount cradle, routing cable, waterproof panel mount connector

ORDER CODE - ZSTAVH310

STANDARD HORIZON VM-3500E

Fixed DSC VHF Radio

Features oversized knobs for easy control of volume, squelch, channel and other radio and DSC functions. The 560mm internal speaker is loud enough to be heard over engine and background noise.

The large display shows GPS position, Speed Over Ground and Course Over Ground. The radio can also poll and display another vessel's position and on the display of any current Standard Horizon chartplotter.

An inbuilt 30W loud hailer with 4 pre-programmed fog signals and listen back. The optional CMP25B and VH-310 remote microphones operate as fully functional second station and intercoms.

KEY FEATURES

- Submersible (IPX7 front panel)
- Large illuminated alphanumeric display and keypad
- Channel name display (12 character)

ALSO CONSIDER

- Icom M603, Raymarine Ray240E, Simrad RS86/RS87

ORDER CODE - ZSTAVM-3500E

STANDARD HORIZON HX270E

Waterproof Handheld VHF Radio

This compact, rugged submersible handheld VHF features all International, USA and Canadian channels and a highly legible LCD display with automatic backlight. The preset key allows you to recall the 8 most frequently used channels. Standard Horizon are so confident of the HX270E's waterproof integrity and reliability that they are offering a three year no quibble free of charge "repair or replace" guarantee if it fails for any reason during that period.

KEY FEATURES

- Dual Watch
- Battery charge level indicator
- 1400mAh NiMH battery provides 16hr duty cycle
- Standard three year guarantee

SUPPLIED WITH

Alkaline battery tray, 1400mAh NiMH battery pack, 12v overnight charger and belt clip

OUR VERDICT

A popular, competitively priced unit built to a very high standard. Its rugged design, large display and features make it one of our recommended buys.

ORDER CODE - ZSTAHX270E

EDITOR'S
CHOICE

STANDARD HORIZON CMP25B

RAM+ Second Station Mic

Boat Owner

This submersible remote has an oversized LCD display and backlit keys. It operates as a second station to the radio allowing full control of the VHF at the flybridge, in the cockpit, tower or location of your choice.

KEY FEATURES

- Compatible with VM3500E, GX1500E & GX3000E
- Control all VHF functions including PA, foghorn and DSC
- Inbuilt distress alert button
- Display shows channel names and repeats GPS information

SUPPLIED WITH

Bulkhead socket assembly, mounting clip

ORDER CODE - ZSTACMB25B

STANDARD HORIZON HX500E

Waterproof Handheld VHF Radio

Submersible handheld VHF that adds to the features of the HX270E with the option of using external speaker microphones and headsets via the waterproof accessory socket.

Now with Lithium Ion battery pack for longer life.

KEY FEATURES

- Selectable transmit power
- 700mW loud audio
- VOX hands-free operation with optional VC-24 headset

SUPPLIED WITH

Li-Ion battery pack, 12v overnight charger, cigarette lighter cable, belt clip

ORDER CODE - ZSTAHX500E

Chartplotters

STANDARD HORIZON CP180

5in Chartplotter



The superb CP180 sets new standards for small chartplotters. With a high resolution sunlight-viewable display it's packed with features normally reserved for much bigger, more expensive units including AIS integration - connect an AIS receiver to display position, speed and course of commercial vessels directly on the chart screen!

KEY FEATURES

- External or internal GPS antenna
- 600 waypoints, 20 routes
- 2nm worldwide basemap
- C-Map MAX and NT+ compatible
- Customisable data windows
- VHF DSC polling capability
- Optional FF520 black box fishfinder input
- Compatible with VM3500E, GX1500E & GX3000E VHF radios
- AIS integration
- 3 year warranty

SUPPLIED WITH

12 channel GPS, mounting bracket, flush mount kit

ORDER CODE (EXT ANTENNA) - ZSTACP180E
ORDER CODE (INT ANTENNA) - ZSTACP180I



STANDARD HORIZON FF520

Fishfinder Module



New black box fishfinder module that can be added to the CP180, CP300 or CP500 chartplotters, transforming them into combination Chartsounders with split screen display.

KEY FEATURES

- Dual frequency 50/200kHz
- Fish symbols or coloured echo
- Up to 4 x zoom
- White line helps distinguish between fish and the seabed
- Inbuilt Sensitivity Time Control reduces or eliminates surface clutter
- Fish alarms
- Choice of transducers - Xducer ID detection system automatically selects the power output and configures the parameters to suit the transducer

SUPPLIED WITH

Transducer supplied separately and must be specified

ORDER CODE - ZSTAFF520



Find out more...

About C-Map MAX -

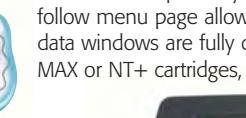
C-Map

pages 34, 35

STANDARD HORIZON CP500

12in Chartplotter

With a big, bold, 12in sunlight-viewable screen, the CP500 offers all the features of the CP300 with the addition of an alphanumeric keypad and radar compatibility.



KEY FEATURES

- 12in 800x600 pixel sunlight viewable TFT colour display
- Radar and AIS integration
- 5 NMEA outputs, 2 NMEA inputs, 2 video inputs for security cams, DVD etc
- VGA output for repeaters/second stations

SUPPLIED WITH

12 channel GPS, mounting bracket, flush mount kit

ORDER CODE - ZSTACP500

STANDARD HORIZON CP300/CP300i

7in Widescreen Chartplotter

This chartplotter features a large, high resolution 800x480 pixels 7in display and 6 customisable quick keys for fast navigation of the chartplotter functions. An easy-to-follow menu page allows quick access to the various navigational screens, whilst all data windows are fully customisable. Working in conjunction with either C-Map MAX or NT+ cartridges, there is an amazing degree of information available.



KEY FEATURES

- External or internal 12-channel WAAS/EGNOS GPS antenna
- 2 NM Worldwide background map included
- Supports AIS (AIS Receiver required)
- 3000 marks/waypoints, 50 routes
- 5 NMEA outputs, 2 NMEA inputs, video input
- VHF DSC position polling
- Optional fishfinder black box
- 3 year waterproof warranty

SUPPLIED WITH

12 channel GPS, swivel mounting bracket, flush mount kit

ORDER CODE - ZSTACP300

Turn to the back page for pricing and ordering info NOW!

Handheld VHF Radios

ICOM IC-M71**Handheld VHF Radio**

The successor to the immensely popular IC-M1EuroV builds on the ground breaking achievements of its predecessor by setting new standards in design, waterproofing and battery technology. A durable and rugged body provides for user-friendly operation and long life, and advanced waterproof protection to 1.5m depth for 30 minutes (equivalent to IPX8 rating) is a first for the market place.

The IC-M71 is the first VHF marine handheld to feature output power of 6 Watts, and it uses a bridge-tied load (BTL) audio amplifier to increase the audio output power. Its internal speaker delivers a loud 600mW audio output with clear sound even in noisy environments. In addition, "AquaQuake", a water draining support function ejects water from the speaker grille with low frequency sound.

KEY FEATURES

- Standard high capacity 2000mAh Li-Ion battery pack - up to 16 hours operation
- 2-step power saver
- 70 programmable channels
- Voice scrambler version available
- Hands-free operation with optional headset
- Optional speaker mic

SUPPLIED WITH

2000mAh Li-Ion battery pack, "Smart" battery charger, belt clip, lanyard

ORDER CODE - ZICOM71**ICOM IC-M33****Buoyant Handheld VHF Radio**

Icom unveils the world's first marine VHF transceiver that floats in water. This revolutionary new radio has been designed to be easy to use and is supplied as standard with a 980mAh Li-Ion battery pack provides 9 hours of operating time. The ergonomic design of the case means it's easy to hold and use, even with gloved hands and as with all Icom handhelds, it features a large, easy to read backlit LCD which clearly shows all necessary information. Another innovative feature is the "AquaQuake" draining function - a vibrating sound from the loudspeaker clears water away from the speaker grille.

KEY FEATURES

- The world's first buoyant 5W VHF marine transceiver
- IPX7 waterproof protection - 1m depth for 30 minutes
- Li-Ion battery and charger standard
- Optional HM-165 waterproof speaker-microphone
- Quick channel selection with Favourite channel function
- Dual/Tri-watch and Auto scan functions
- 4-step battery life indicator, 2-step power saver
- 70 programmable channels
- Instant access to Ch 16 or programmable call channel
- Optional battery case for using with alkaline cells (The IC-M33 still floats when this battery case is connected)

SUPPLIED WITH

980mAh Li-Ion battery pack, charger, belt clip and lanyard

ORDER CODE - ZICOM33**ICOM IC-M87****Handheld VHF/PMR Radio**

Tough, waterproof radio with large, backlit LCD. Simple to operate, even when wearing gloves. Self check function monitors unit temperature and battery voltage.

KEY FEATURES

- Simple add/delete TAG scanning operation
- Automatic scan function
- 2 step power saver
- 5 Watts output power
- 22 free PMR channels
- Key lock function
- Optional AA battery case
- Optional speaker mic
- Wide range of audio accessories

SUPPLIED WITH

Li-Ion battery pack, charger, belt clip and hand strap

ORDER CODE - ZICOM87.001**ICOM PCR1500****PC Receiver**

PC-based radio scanner that connects to your PC via USB, providing wide frequency coverage from 10kHz to 1300MHz with SSB, CW, AM, FM and WFM modes. Ideal for receiving weatherfaxes etc if you don't have an SSB transceiver.

KEY FEATURES

- Choose the screen you want to operate from - Communication Receiver, Component Style, Compact Screen
- Monitor 25 channels on the screen at a glance
- Unlimited number of memory channels

ALSO AVAILABLE

- **R1500** - connect to PC or control via remote head, high speed scanning (60 channels/sec), various noise reduction features which provide clearer receiver sound

ORDER CODE PCR1500 - ZICOPCR1500**ORDER CODE R1500 - ZICOR1500****Don't forget...****V'Tronix Antennas & Fittings**

You've bought a new radio, but is your antenna past it? Remember - a poor antenna = poor performance!

YHK

Stainless Steel Whip + Hawk wind indicator

- Low windage
- 20m cable
- Solderless connection
- PL259 plug

**YWX Whipflex**

Stainless Steel Whip

- Low windage
- 20m cable
- Solderless connection
- PL259 plug

**HA156C Heliflex**

Stub Antenna

- Low windage for racing yachts
- Helical construction
- 20m cable
- PL259 plug
- No groundplane required

**YRR Raider**

RIB Antenna

- Specially designed for rigid inflatable boats
- Short helical design to avoid snagging
- Solderless connection
- 6m cable
- PL259 plug

**RV120 / RV120-P**

1.4m GRP Antenna

- Ideal for smaller power boats and workboats
- 6m cable
- PL259 plug
- Stainless steel ferrule (RV120)
- Polycarbonate ferrule (RV120-P)

**RV240**

2.4m GRP Antenna

- Ideal for larger power boats and small ships
- Strong fibreglass tube
- 6m cable
- PL259 plug
- Stainless steel ferrule

**AA20**

Active Antenna

- Receive only
- For Navtex, Weatherfax AM/SSB receivers etc
- 20m cable
- BNC plug
- Use with AAX1/AAX5

**AAX1**

Power Supply

- Use when DC power is not supplied by the receiver
- 10-30v DC
- 1m cable
- BNC jack

**AAX5**

Power Supply / Splitter

- Use when DC power is not supplied by the receiver
- Supply up to 5 receivers with one antenna
- 10-30v DC
- 1m cable
- BNC jack

**WS200-P**

Extension Loudspeaker

- Surface or flush mount
- Weatherproof, UV resistant
- Suitable for 4 or 8 ohm systems

**ARMNT-P**

Ratchet Mount (Nylon)

- 4-way swivel mount
- Deck or side mount
- Quick release lever
- UV resistant
- Suitable for antennas less than 2.4m

**ARMNT**

Ratchet Mount (S/Steel)

- 4-way swivel mount
- Deck or side mount
- Quick release lever
- Suitable for all powerboat antennas



We accept most major credit and debit cards



Fixed VHF/SSB Radios

ICOM IC-M505E

Fixed DSC VHF Radio

All-in-one DSC VHF with large dot matrix LCD, rotary volume, squelch and channel select knobs and fistic. The IC-M505 is compatible with the HM-162 Commandmic enabling full function dual station control of its DSC functions, intercom and other remote functionality including foghorn and a loudhailer.

KEY FEATURES

- Advanced IPX8 waterproof protection
- Large backlit dot matrix LCD display
- Full function Class D DSC
- NMEA GPS input/output
- Dual / Tri Watch
- Fast Scan
- 25w hailer and auto fog horn facility



ORDER CODE - ZICOM505

ICOM IC-M603E

Fixed DSC VHF Radio

The IC-M603E is compatible with up to two HM-162 Commandmic III's, allowing for full remote control of all the built-in Class D DSC functions, as well as providing intercom capabilities and other remote functionality including foghorn and a loud hailer. Like the IC-M33 handheld VHF, the IC-M603E features the innovative AquaQuake draining function which emits a vibrating sound to clear water away from the speaker grille.

KEY FEATURES

- Inbuilt Class D DSC operation
- High resolution LCD with clear, easy to read characters.
- IPX7 Waterproof construction (1m depth for 30 minutes)
- Front and rear microphone connection
- 30 Watt 2-way hailer capability
- Listen back through your hailer

SUPPLIED WITH

Fistic, power cable



ORDER CODE - ZICOM603

ICOM HM-162 COMMANDMIC III

Full Function Remote Fistic

Handheld fistic with LCD display and multi jog dial giving full control of the new IC-M505Euro including its DSC functions, intercom and other remote functionality including foghorn and a loudhailer. This allows the user to operate the transceiver from many areas of the vessel such as the deck or fly bridge with ease. The Commandmic fits in the palm of your hand comfortably and the multi jog dial enables easy and intuitive operation.

KEY FEATURES

- Large backlit dot matrix LCD display
- Distress Alert button on rear of unit
- Large 45mm speaker give loud, clear sound
- Compatible with IC-M505
- Waterproof to IPX8



ORDER CODE - ZICOHM162E

ICOM IC-M411E

Fixed DSC VHF Radio

A compact waterproof VHF/DSC radio ideal for small boats or where space is at a premium. The large speaker grille gives excellent audio quality. The buttons and display are easy to see in poor lighting conditions. The innovative Aquaquake draining function emits a buzzing sound which sheds any water that gets into the speaker system, ensuring sharp, clear audio even in the worst conditions.

KEY FEATURES

- Dual/Tri watch & multiple scan
- Up to 70 programmable channels
- Programmable channel comment
- 100 MMSI directory and up to 40 received DSC messages
- External speaker connection
- Low voltage indicator and 2-step power saver function

SUPPLIED WITH

Fistic, power cable



ORDER CODE - ZICOM411



ICOM IC-M801E / IC-M801GMDSS

SSB Transceiver

Powerful SSB radio system which meets Class E (IC-M801E) and GMDSS Class A (IC-M801GMDSS) specifications and features inbuilt DSC facilities. The main transceiver unit can be installed out of sight, while operation is via a compact remote control panel with a large, easy to read display. Two large bank and channel dials make channel selection fast and easy. 1355 ITU channels, up to 16 banks of user channels, 17 banks of ITU channels - each with up to 20 channels per bank Inbuilt modem for email and data services. NMEA in for GPS, RS-232C port for PC input. The remote control can be integrated with the IC-M601 or IC-M505 VHF radio to form a complete MF/HF/VHF communications station.



KEY FEATURES

- Digital signal processor
- 125W (PEP) output
- VFO mode option
- Wide band receive coverage (0.5 – 29.9999MHz)
- Headphone jack, RS-232C/NMEA input, GPS input, printer output and D-SUB connector for NBDP/FSK terminal
- IC-M801GMDSS meets MED96/98/EC wheelmark requirements for SOLAS
- Available with fistic or telephone handset
- Icom M802 for non-UK vessels also available



ORDER CODE 12V INC ATU141 - ZICOM801-PK1
 ORDER CODE 24V INC ATU141 - ZICOM801-PK2

ICOM IC-M401EURO

Fixed DSC-Ready VHF Radio

Ideal for anyone wanting to upgrade to DSC at a later date or where space is at a premium. Rated JIS-7 submersible and perfect for small boats like RIBs. To upgrade to DSC, simply add the DS100 Controller.

KEY FEATURES

- Normal, priority and tag scanning
- 22 memory channels
- Dual watch and tri-watch function

SUPPLIED WITH

Fistic, power cable



ORDER CODE - ZICOM401.001

This is just a small selection of our full range of products!

THRANE & THRANE SAILOR FLEETBROADBAND 250 & 500

Voice & Broadband Internet Access

Sailor FleetBroadband is the new benchmark for broadband Internet at sea and standard IP applications. Reliable high-speed IP communication is now available to all vessels, providing broadband data and voice simultaneously on the latest generation of Inmarsat satellites.

These unique solutions give you faster, more cost-effective access to data services than ever before. Simultaneously having access to voice and high-speed data services on a global basis will revolutionise data access on vessels. Sea chart information, online weather data, route planning and crew calling can all be undertaken at the same time.

KEY FEATURES

- IP connection for e-mail and internet/intranet access including secure VPN
- Streaming IP, guaranteed bandwidth
- ISDN (Sailor 500 FleetBroadband only)
- Sailor 250 - data up to 284Kbps
- Sailor 500 - data up to 432Kbps
- Voice and data simultaneously
- Compact hardware
- Sailor 250 dome 33cm diameter,
- Sailor 500 60.5cm diameter



NEW FOR 2008

ORDER CODES - CALL FOR CUSTOM QUOTE

THRANE & THRANE TT-3026D

Mini-C System

The world's first Inmarsat Mini-C system, comprising transceiver, antenna, and 12-channel GPS receiver in a single unit. The compact design and power conserving features make it very attractive for tracking and e-mail applications. It ensures fast and reliable transfer of vital information, e.g. position reporting, data monitoring, messaging, loading and unloading information, route planning, etc. It also features an advanced sleep mode function and includes a number of port options supporting interfacing requirements as well as six configurable I/O pins which can be connected to remote sensors, relays, or switches.

KEY FEATURES

- Extremely low power consumption
- Send and receive internet, e-mail, telex, Inmarsat-C, X-25, SMS (depending on applications)
- Optional message terminals available if no PC used
- Type approved for maritime applications
- Receives Enhanced Group Call (EGC) messages for SafetyNet and FleetNet

SUPPLIED WITH

EasyMail communication software for Windows



ORDER CODE - ZTHRTT3026D

IRIDIUM SAILOR SC4000

Fixed Iridium Satellite Phone

Suitable for any size of vessel, comprises transceiver, intelligent handset and small marinised antenna. Ideal for crew calling use with pre-paid scratch cards.



KEY FEATURES

- True global coverage - voice and data
- Data rate 9.6kps when compressed
- Rugged construction, lightweight waterproof antenna
- Flexible installation - up to 50m between handset and transceiver, up to 30m coax cable available
- RJ11 port for secondary analogue telephone

SUPPLIED WITH

Transceiver, antenna, handset. Antenna cable sold separately (10, 15, 20 & 30m sizes)

ORDER CODE - ZIRIAS23799

IRIDIUM 9505A

Iridium Satellite Phone

Handheld telephone in a rugged case, can also be used with an external antenna for below deck voice and data (email) calls. Ideal for emergency storage and/or routine use.



KEY FEATURES

- Headset/handsfree accessory
- Two way SMS facility
- Voice mail and call forwarding
- Signal strength and battery meters
- Data capable via optional data kit accessory
- Includes lightweight external antenna (1.5m cable)
- Marine antenna for semi-permanent installation

SUPPLIED WITH

Battery, AC charger, DC car charger, leather case, handsfree kit, external antenna

ORDER CODE - ZIRIRRSS9505



THURAYA SO-2510

Satellite Phone

The world's smallest satphone!

At only 130g, this lightweight pocket sized phone is designed to be highly portable and user friendly.

KEY FEATURES

- 1.5in 128x128 pixel display
- SMS, polyphonic ring tones
- Enhanced GPS Services
- Internal memory - up to 32Mb
- Connectivity - USB
- GmPRS equipped - up to 60kbps
- Fax and Data at 9.6kbps (Circuit Switched)
- Talk time up to 2.4 hrs



ORDER CODE - ZTHUSO2510

THURAYA SG-2520

Triband Smartphone

Satphone, GSM phone and GPS in one handset with a 177x200 pixel colour display and 1.3 megapixel camera with 5x digital zoom.

The SG-2520 is the only satellite tri-band phone in the market that allows operation on three different types of GSM networks: 900, 1800 and 1900MHz offering greater flexibility in high traffic GSM environments with increased phone usability and voice quality in Asia, Africa, Australia, Europe and North America.

KEY FEATURES

- World's smallest dual mode satellite phone
- Enhanced GPS Services
- Internal memory - up to 128Mb
- External memory - SD memory card
- GmPRS equipped - up to 85.6kbps (GSM), up to 60kbps satellite mode
- Fax and data at 9.6kbps (Circuit Switched)
- Talk time up to 2.4hrs (satellite) up to 4hrs (GSM)



IRIDIUM RST310 INTELLIDOCK

Docking Station

Ideal for fixed or mobile applications, providing an intelligent RJ11/POTS interface which emulates all the standard features of a public telephone service. Operate connected equipment as if using a standard telephone connection. The RST310 is equipped to provide selectable line voltages and currents for ring and service tones, along with off-hook detection.

KEY FEATURES

- Connect to standard phones, faxes etc
- Iridium voice and data services
- SMS, SMSMO, Voicemail, call logging, crew calling
- Tracking and monitoring capable
- Line reversal for payphone use
- Supports intelligent handsets
- Local and remote configuration
- Supports backup battery / Solar



ORDER CODE - CALL FOR DETAILS

Seen it for less? We will not be beaten on price - call us NOW!



Complex technology needs specialist service and support - as well as competitive prices. We just offer marine electronics - and with no rope, paint or engines to clutter our minds, you'll find us switched on to your needs! Unlike many distributors, we carry all the leading brands. That means just one source for all your electronic needs - and just one invoice too - making paperwork easier!

Tell me how...

Sophisticated products need sophisticated and specialist support. We're here to provide the support you need by phone, fax or e-mail. The fastest route to a support solution is via e-mail as our team of technicians may be remote from the office you are calling - e-mail tellmehow@navmarine.net with your customer reference and details of your query and we'll have you up and running in no time!

Payment

Navigate only supplies the marine trade. You'll need to complete an account application form to get started - call us today for a copy on **0870 121 3085**. Subject to a credit check, we can open a monthly direct debit trading account and payment can also be made by credit card if preferred!

Marketing

Need brochures, point of sale or dummy displays - no problem! Just give us a call. Plus we're happy to help if you have an open day or promotion and you'd like us to attend with working displays.

Ordering

Ordering is easy - call us, fax us or visit www.navmarine.net for up to the minute trade prices. All orders are treated as urgent and we pride ourselves on fast and efficient deliveries.

No Minimum Order Charge

That's right, no minimum order charge. We'll ship a spare part or a sophisticated satcom with the same care and consideration. That's the Navigate! promise.

Warranty

All of our products carry a minimum one year warranty. We often have special promotions where we offer enhanced or extended warranty or even on-board service for installed/commissioned systems. Ask your sales advisor about the benefits of our warranty offers.

Why No Prices?

People often ask why we don't print prices in our Buyer's Guide, the reason is simple - the Buyer's Guide comes out once a year, but prices change daily. Our prices are shown on our website, and we can provide you with our complete price list as an Acrobat PDF file on request - for the latest prices and details of special offers,

- **email us** on sales@navmarine.net,
- **call us** on **0870 121 3085**
- **fax us** on **01202 661169** or
- **visit us** on www.navmarine.net



NAVIGATE!

Marine Distribution


CONTACT US

Navigate Marine Distribution Ltd
Unit 2, Vitrage Technical Park
Witney Rd, Nuffield Estate
Poole. BH17 0GL

Tel 0870 121 3085
Trade Counter Tel 01202 666098
Fax 01202 661169
Email sales@navmarine.net
Web www.navmarine.net



©2008 Navigate Marine Distribution Ltd

Created by  Avalyn Design avalyn.co.uk

• Competitive Trade Prices • Fast Delivery • Expert Advice • Friendly Knowledgeable Team